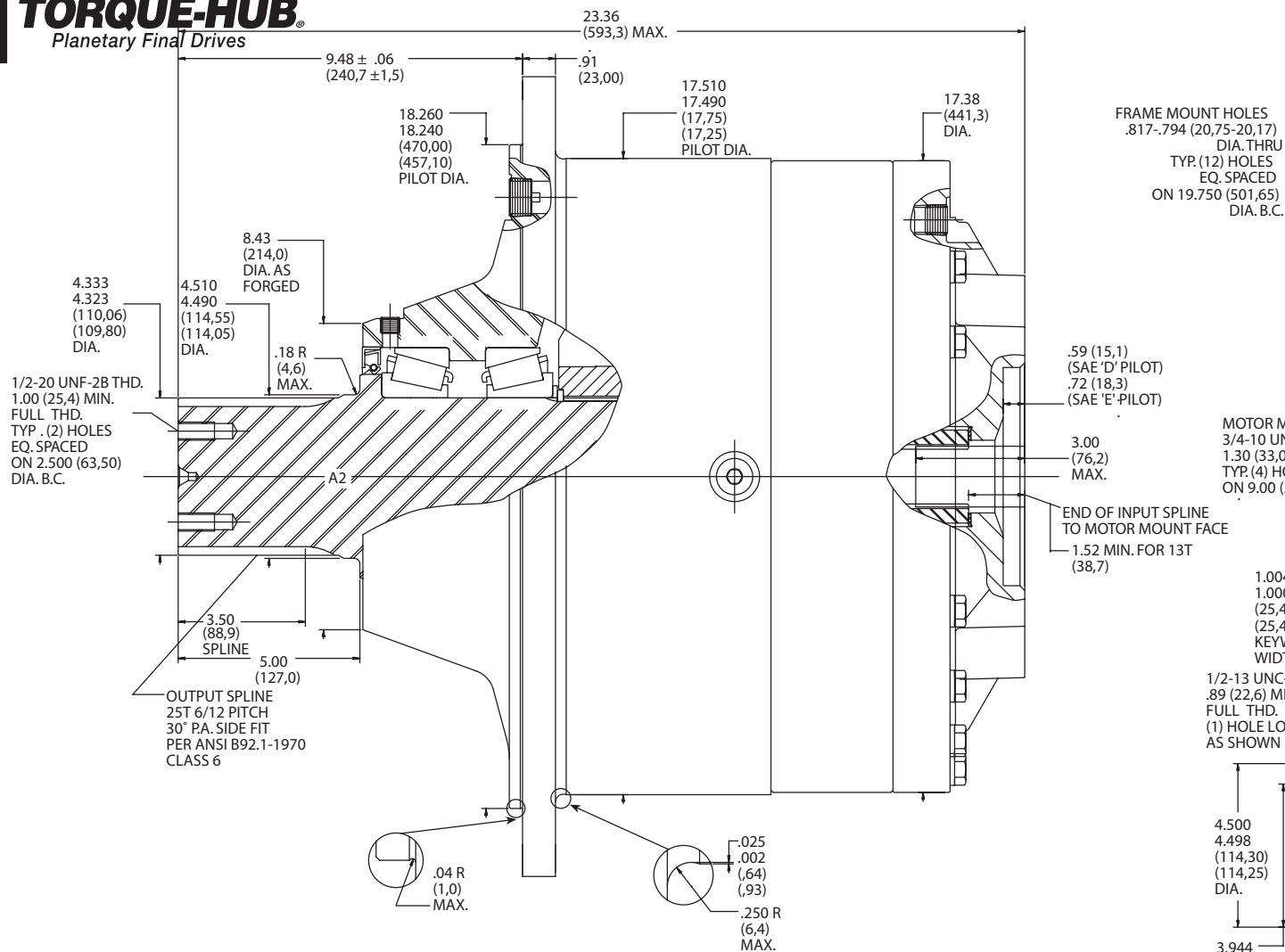


S25A1

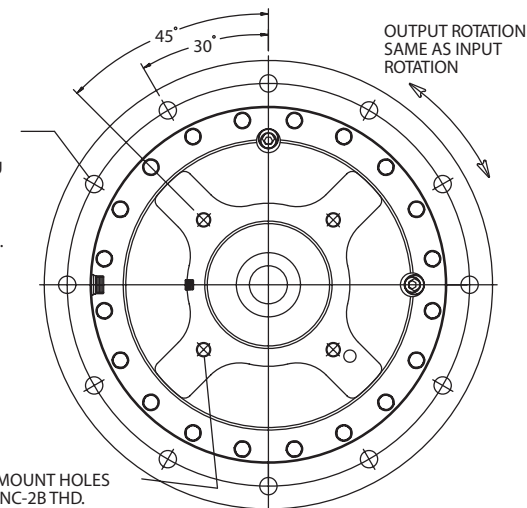
Application Sheet

TORQUE-HUB[®]

Planetary Final Drives



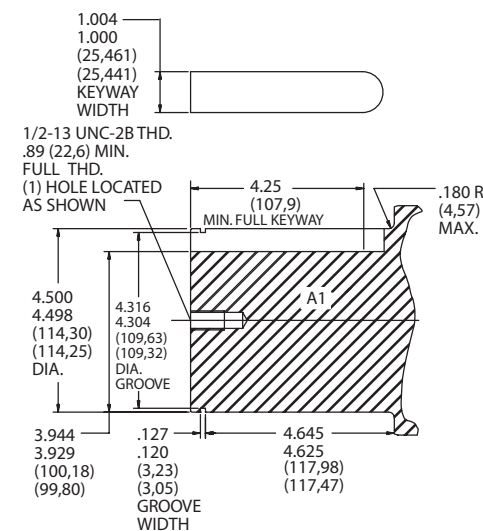
FRAME MOUNT HOLES
.817-.794 (20,75-20,17) DIA. THRU
TYP. (12) HOLES EQ. SPACED ON 19.750 (501,65) DIA. B.C.



MOTOR MOUNT HOLES
3/4-10 UNC-2B THD. 1.30 (33,0) MIN. FULL THD. TYP. (4) HOLES EQ. SPACED ON 9.00 (228,60) DIA. B.C.

SAE 'D' MOTOR MOUNT

1/2 SCALE



Catalog prints are representative of the units.
Before final design request a certified print from Fairfield.

NOTE: MM SHOWN IN ()
MOTOR CAVITY DIMENSIONS VARY WITH MODEL

OTHER MODELS ALSO AVAILABLE
FAIRFIELD BRAKE AVAILABLE

S25A1

Performance Data

Continuous	Intermittent	Peak
200,000 lb-in	400,000 lb-in	Contact Fairfield
16,667 ft-lb	33,333 ft-lb	
22,600 Nm	45,200 Nm	
2,300 Kg-m	4,600 Kg-m	

For ultimate torque and horsepower capacities, contact a Torque-Hub® representative.

Speed Limitations

Input Speed: 3,000 RPM Maximum Intermittent

Contact Fairfield for speed limitations and horsepower.

Weight

Approximately 1350 lbs. (612kg)

Note: Specific models will change weights.

S25A1 Model Formula

Oil

Fill to half full with 90 weight gear lube with EP additive on most applications.

Volume of Oil: 228 oz. (4.68 quarts)

Note: Oil level and type will vary with specific model and application.

Conditions of Bearing Curve

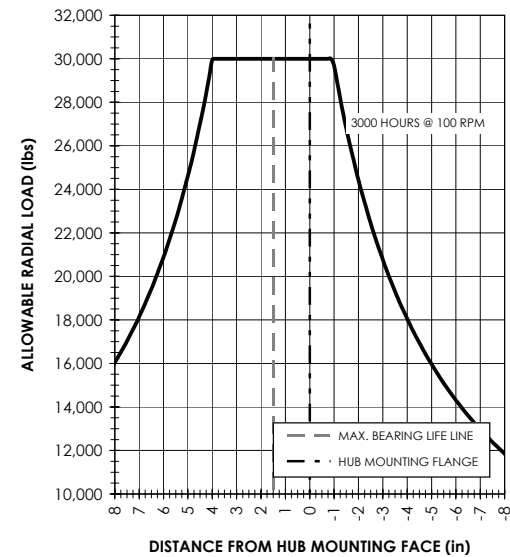
Life = 3,000 hours B-10

Speed = 100 RPM output

To adjust for loads and speeds other than shown on curve:

$$\text{Adjusted Life (hrs)} = 3,000 \left(\frac{100 \text{ RPM}}{\text{Speed (Adjusted)}} \right)^x \left(\frac{\text{Load (Curve)}}{\text{Load (Adjusted)}} \right)^{10/3}$$

Bearing Curve



S 25 A 2 E 5 19

S- Torque Hub Spindle Output

25- Series

	Shaft		Hub	
	Configuration	Hub Flange Thickness	Flange Thickness	Flange B.C.
A1	1" Keyway 4.50" Dia.	.91	(12) .817/.794 Holes 19.750 B.C.	
A2	4.500" Dia. 25T, 6/12 Spline	.91	(12) .817/.794 Holes 19.750 B.C.	

Reduction

19 – 18.95:1
29 – 29.08:1
36 – 36.00:1

Input

5 – 13T, 8/16 Spline

Motor Mount

E – S.A.E. "E" (6.505/6.501) Pilot 4 Bolt
5 – S.A.E. "D" (6.005/6.001) Pilot 4 Bolt

oerlikon
fairfield

Fairfield Manufacturing Company, Inc.

First in Custom Gears and Drive Systems

www.fairfieldmfg.com