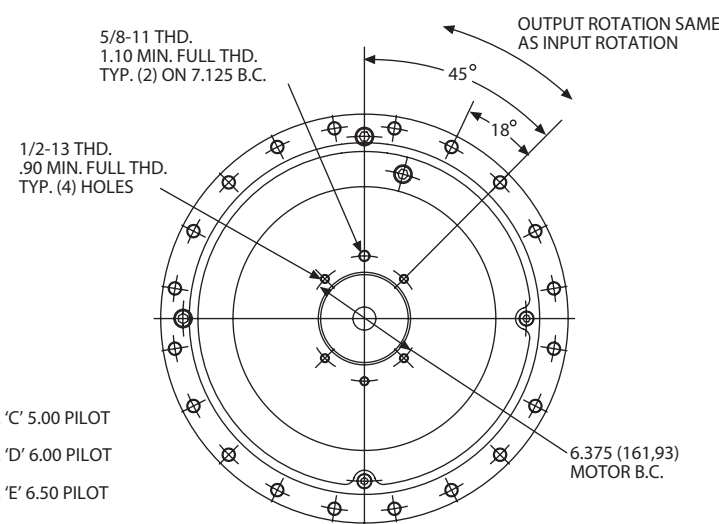
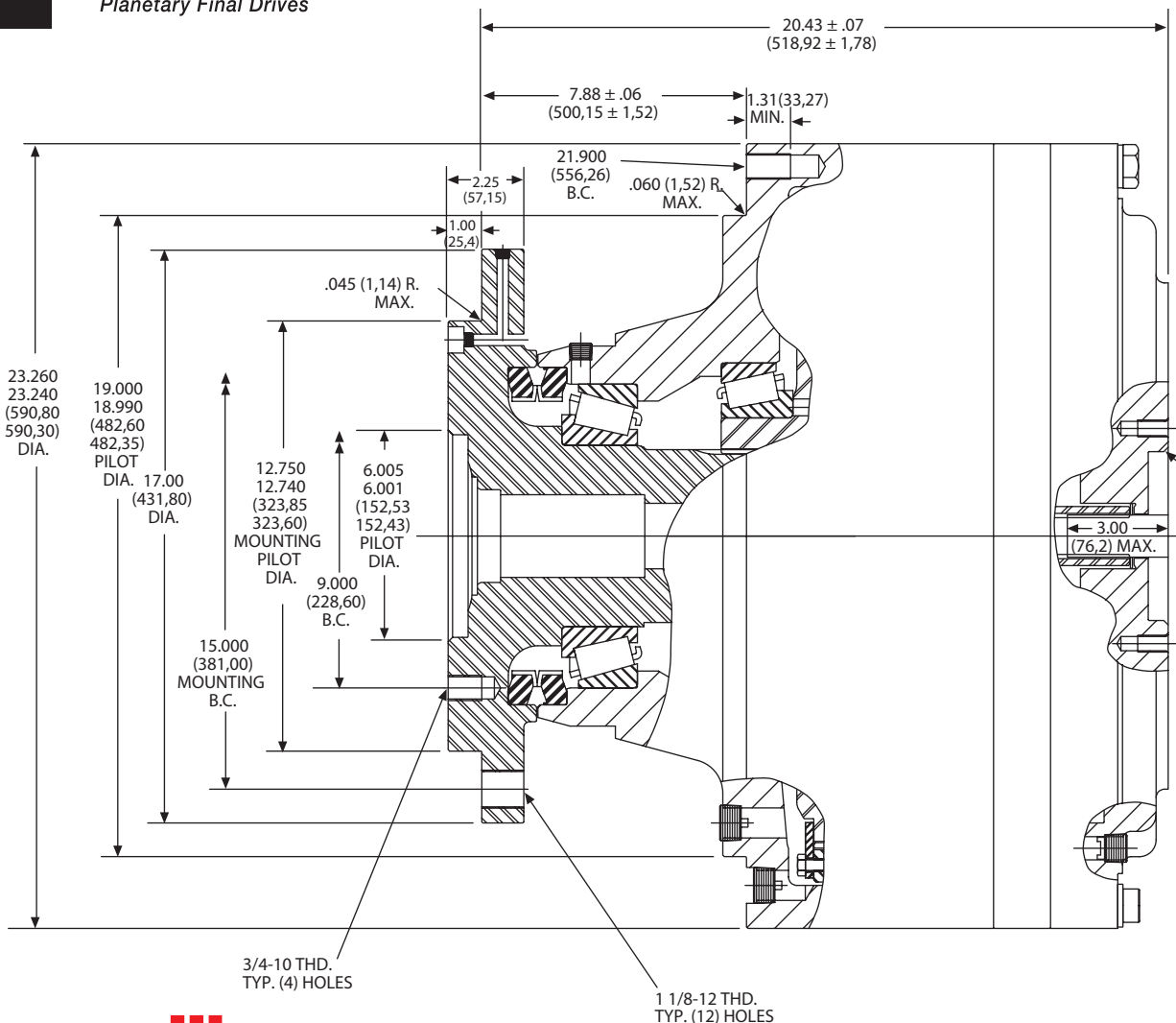
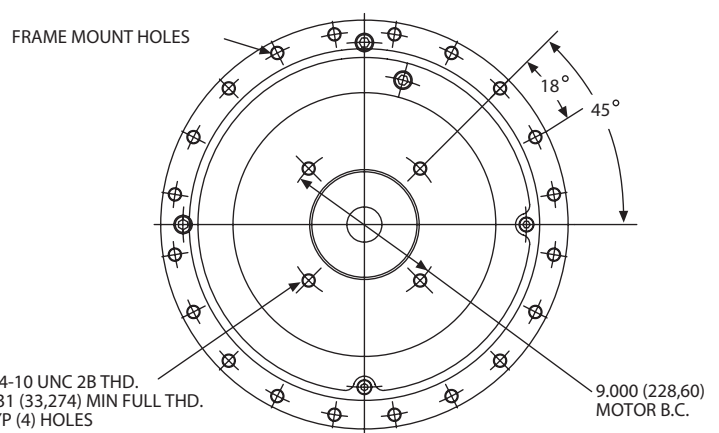


TORQUE-HUB
Planetary Final Drives



SAE 'C' MOUNT



SAE 'D' MOUNT



Catalog prints are representative of the units.
Before final design request a certified print from Fairfield.

NOTE: MM SHOWN IN ()
MOTOR CAVITY DIMENSIONS VARY WITH MODEL

OTHER MODELS ALSO AVAILABLE
FAIRFIELD BRAKE AVAILABLE

S20B1

Performance Data

Continuous	Intermittent	Peak
250,000 lb-in	500,000 lb-in	600,000 lb-in
20,833 lb-ft	41,667 lb-ft	50,000 lb-ft
28,227 Nm	56,453 Nm	67,800 Nm
2,880 kg-m	5,760 kg-m	6,900 kg-m

For ultimate torque and horsepower capacities, contact a Torque-Hub® representative.

Speed Limitations

Input Speed: 2000-2500 RPM Maximum Intermittent

(Contact Fairfield for specific speed information.)

Weight

Approximately 1,350 lbs (608 kg)

Note: Specific models will change weights.

S20B1 Model Formula

S – Torque-Hub® Spindle Output

20 – Series

	Spindle		Hub	
	Flange Mounting Dia.	B.C.	Mounting Dia.	B.C.
B1	12.750 12.740	(12) 1 1/8-12 15.000 B.C.	19.000 18.990	(20) 3/4-10 21.900 B.C.

Oil

Fill to half full with 90 weight gear lube with EP additive on most applications.

Approximate Volume 256 oz. (7,573 cm³)

Note: Oil level and type will vary with specific model and application.

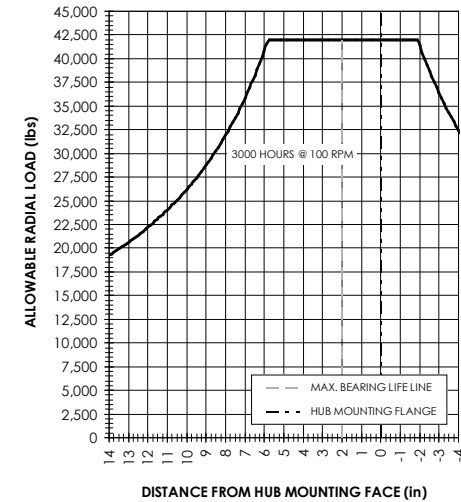
Conditions of Bearing Curve

Life = 3,000 hours B-10
Speed = 100 RPM output

To adjust for loads and speeds other than shown on curve:

$$\text{Adjusted Life (hrs)} = 3,000 \left(\frac{100 \text{ RPM}}{\text{Speed (Adjusted)}} \right) \times \left(\frac{\text{Load (Curve)}}{\text{Load (Adjusted)}} \right)^{10/3}$$

Bearing Curve



S 20 B1 5 4 4 62 Z Y

Special Feature
Y – Seal Boot

Special Feature
Z – Blank

Reduction
27 – 27.2:1
37 – 37.6:1
54 – 54.2:1
62 – 62.2:1
86 – 86.3:1
116 – 116.3:1

Input
4 – 14T, 12/24 Spline
5 – 13T, 8/16 Spline

Internal Gear

4 – Reduction 27:1 & 54:1
5 – Reduction 37:1 & 62:1
9 – Reduction 86:1 & 116:1

Motor Mount

4 – S.A.E. "C" (5.005/5.001) Pilot (2 & 4 Bolt)
5 – S.A.E. "D" (6.005/6.001) Pilot (4 Bolt)
9 – S.A.E. "D" pilot (with "E" Bolt)
E – S.A.E. "E" (6.505/6.501) Pilot 4 Bolt

oerlikon
fairfield
Fairfield Manufacturing Company, Inc.
First in Custom Gears and Drive Systems
www.fairfieldmfg.com