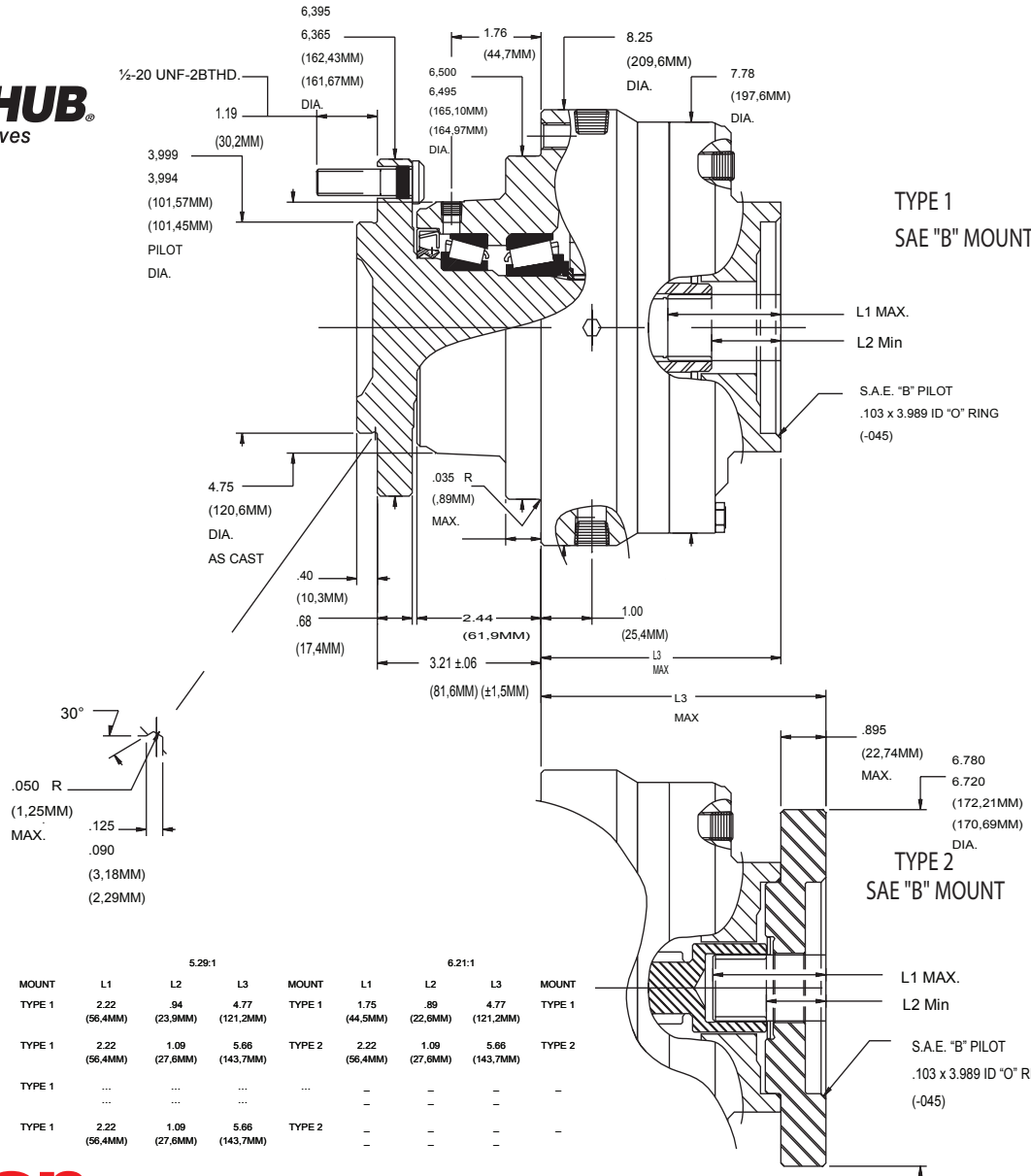
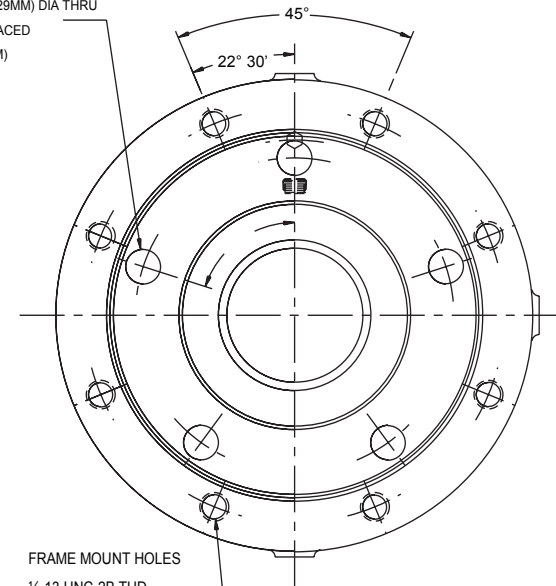


**TORQUE-HUB®**  
Planetary Final Drives

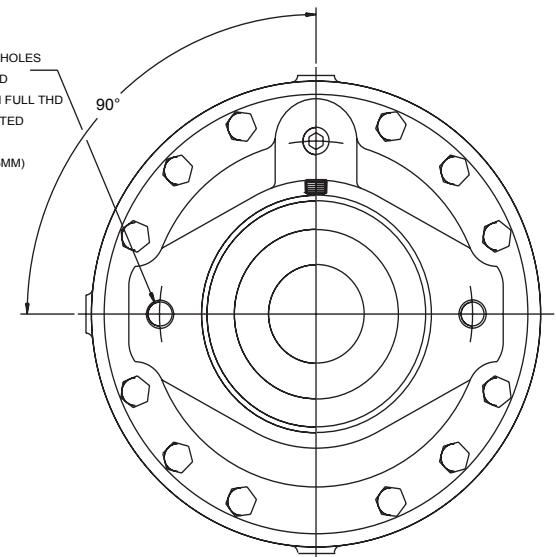


.606/.602 (15.39-15.29MM) DIA THRU  
(5) HOLES - EQ SPACED  
ON 5.500 (139.70MM)  
DIA. B.C.



FRAME MOUNT HOLES  
1/2-13 UNC-2B THD  
.75 (19,1MM) MIN FULL THD  
(8) HOLES EQ SPACED  
ON 7.250 (184,15MM) DIA. B.C.

MOTOR MOUNT HOLES  
1/2-13 UNC 2B THD  
.90 (22,9MM) MIN FULL THD  
(2) HOLES LOCATED  
AS SHOWN  
ON 5.750 (146,05MM)  
DIA. B.C.



RATIO	4.17:1			MOUNT	5.29:1			MOUNT	6.21:1			MOUNT
	L1	L2	L3		L1	L2	L3		L1	L2	L3	
13T	2.22 (56,4MM)	.91 (23,1MM)	4.77 (121,2MM)	TYPE 1	2.22 (56,4MM)	.94 (23,9MM)	4.77 (121,2MM)	TYPE 1	1.75 (44,5MM)	.89 (22,6MM)	4.77 (121,2MM)	TYPE 1
14T	2.22 (56,4MM)	1.25 (31,6MM)	4.77 (121,2MM)	TYPE 1	2.22 (56,4MM)	1.09 (27,6MM)	5.66 (143,7MM)	TYPE 2	2.22 (56,4MM)	1.09 (27,6MM)	5.66 (143,7MM)	TYPE 2
15T	2.22 (56,4MM)	.91 (23,1MM)	4.77 (121,2MM)	TYPE 1	...	...	...	...	-	-	-	-
6B	2.22 (56,4MM)	1.05 (26,7MM)	4.77 (121,2MM)	TYPE 1	2.22 (56,4MM)	1.09 (27,6MM)	5.66 (143,7MM)	TYPE 2	-	-	-	-



Catalog prints are representative of the units.  
Before final design request a certified print from Fairfield.

NOTE: MM SHOWN IN ( )  
MOTOR CAVITY DIMENSIONS VARY WITH MODEL

## S1E1

### Performance Data

Continuous	Intermittent	Peak
15,000 lb-in	30,000 lb-in	40,000 lb-in
1,250 lb-ft	2,500 lb-ft	3,333 lb-ft
1,690 Nm	3,381 Nm	4,508 Nm
172 kg-m	345 kg-m	460 kg-m

For ultimate torque and horsepower capacities, contact a Torque-Hub® representative.

### Speed Limitations

**Input Speed:** 5,000 RPM Maximum Intermittent

### Weight

**Approximately** 63 lbs (29 kg)

Note: Specific models will change weights.

### S1E1 Model Formula

### Oil

Fill to half full with 90 weight gear lube with EP additive on most applications.

**Approximate Volume** 12 oz. (355 cm<sup>3</sup>)

Note: Oil level and type will vary with specific model and application.

### Conditions of Bearing Curve

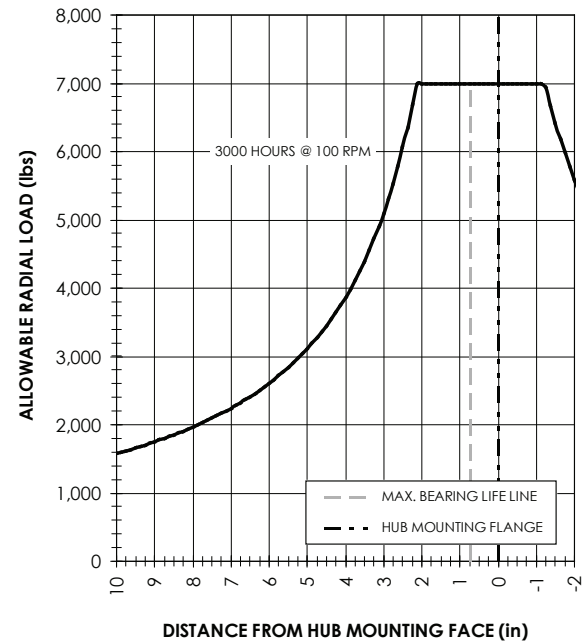
**Life** = 3,000 hours B-10

**Speed** = 100 RPM output

To adjust for loads and speeds other than shown on curve:

$$\text{Adjusted Life (hrs)} = 3,000 \left( \frac{100 \text{ RPM}}{\text{Speed (Adjusted)}} \right)^x \left( \frac{\text{Load (Curve)}}{\text{Load (Adjusted)}} \right)^{10/3}$$

### Bearing Curve



### S – Torque-Hub® Spindle Output

#### 1 – Series

	Spindle		Hub	
	Flange Mounting Dia.	B.C.	Mounting Dia.	Flange B.C.
<b>E1</b>	3.999 3.994	(5) .606/.602 5.500 B.C.	6.500 6.495	(8) 1/2 - 13 7.250 B.C.

**S 1 E1 4 3 3 S4**

**oerlikon**  
**fairfield**  
Fairfield Manufacturing Company, Inc.  
First in Custom Gears and Drive Systems  
www.fairfieldmfg.com

#### Studs

**0** – Not Included  
**4** – 1/2-20x1.875 in.  
(Studs in spindle)

#### Motor Mount

**6** – S.A.E. "A" (3.255/3.251) pilot  
2-bolt and 4-bolt  
**3** – S.A.E. "B" (4.005/4.001) pilot  
2-bolt  
**4** – S.A.E. "C" (5.005/5.001) pilot  
2-bolt

#### Input

**3** – 13T, 16/32 Spline  
**4** – 14T, 12/24 Spline  
**6** – 6B Parallel Spline  
**8** – 15T, 16/32 Spline (4:1 ONLY)

#### Reduction

**3** – 3.56  
**4** – 4.17:1  
**5** – 5.29:1  
**6** – 6.21:1