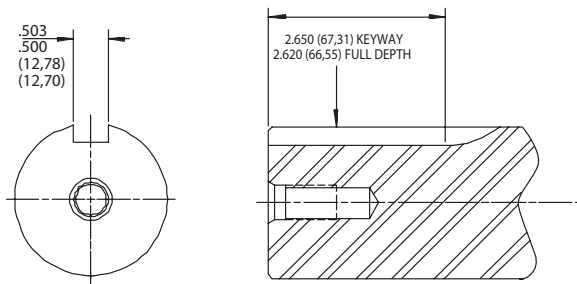
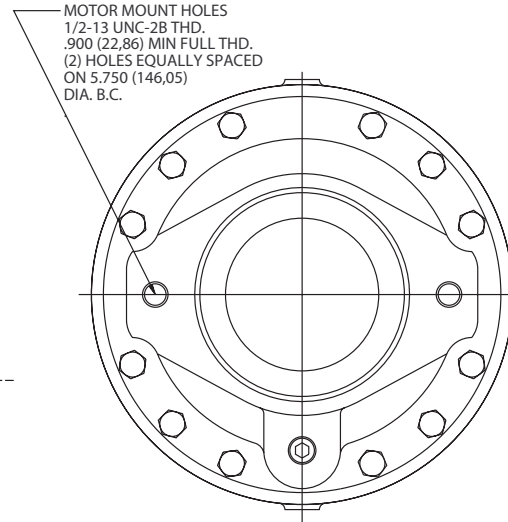


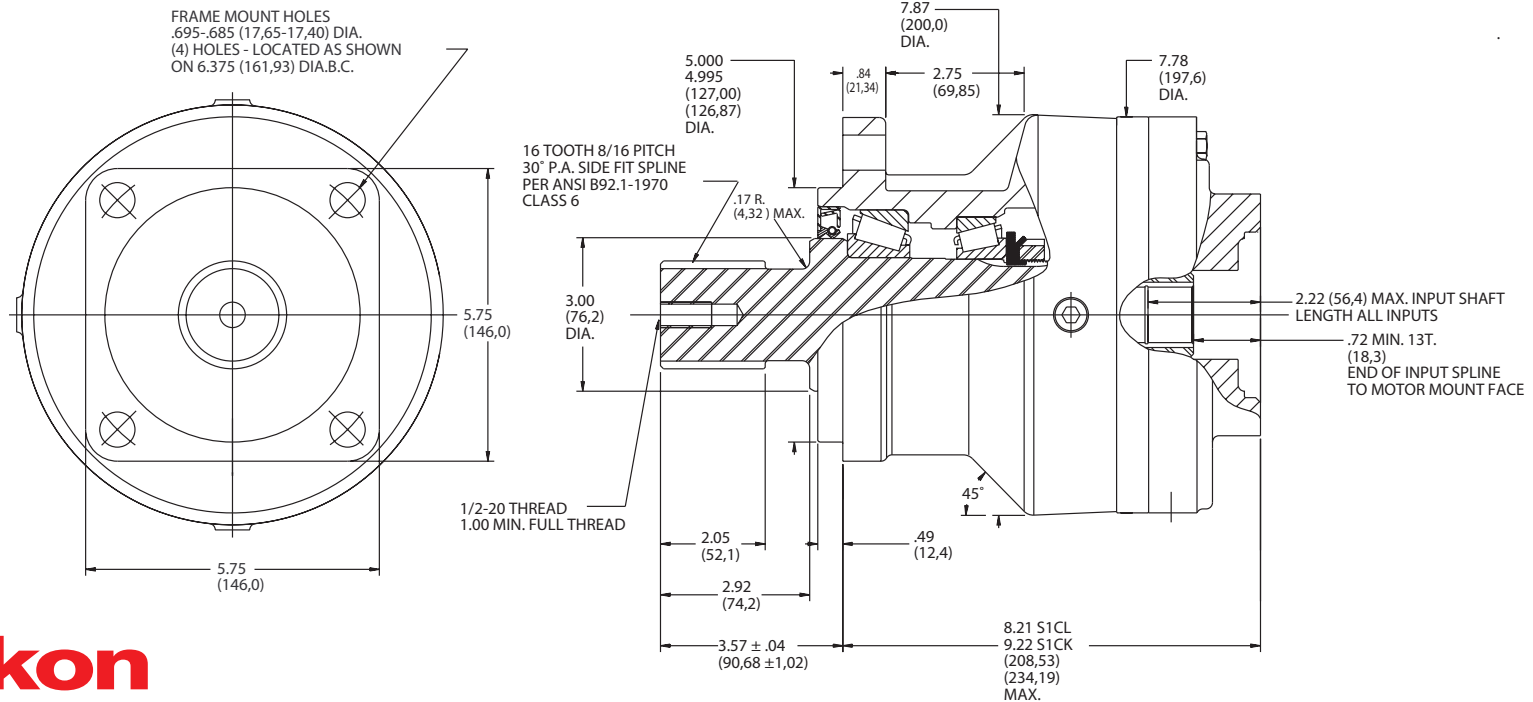
TORQUE-HUB®
Planetary Final Drives



S1CL SHAFT



S.A.E. "B" MOUNT



oerlikon
fairfield

Catalog prints are representative of the units.
Before final design request a certified print from Fairfield.

NOTE: MM SHOWN IN ()
MOTOR CAVITY DIMENSIONS VARY WITH MODEL

OTHER MODELS ALSO AVAILABLE
FAIRFIELD BRAKE AVAILABLE

S1CK/CL

Performance Data

Continuous	Intermittent	Peak
15,000 lb-in	30,000 lb-in	40,000 lb-in
1,250 lb-ft	2,500 lb-ft	3,333 lb-ft
1,690 Nm	3,381 Nm	4,508 Nm
172 kg-m	345 kg-m	460 kg-m

For ultimate torque and horsepower capacities, contact a Torque-Hub® representative.

Speed Limitations

Input Speed: 5,000 RPM Maximum
Horsepower: 40 HP Maximum, 20 HP Continuous
Overall Ratio: 4.17:1, 5.29:1, 6.21:1

Weight

Approximately 68 lbs (30.8 kg)

Note: Specific models will change weights.

S1CK Model Formula

Oil

Fill to half full with EP-90 oil on most applications.

Approximate Volume 12 oz. (355 cm³)

Note: Oil level and type will vary with specific model and application.

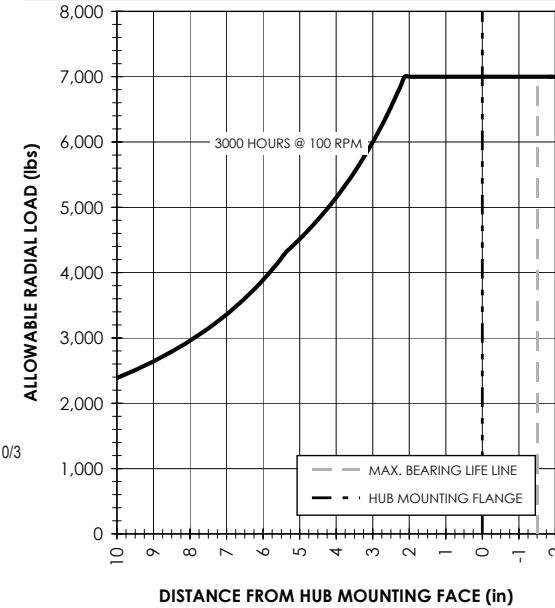
Conditions of Bearing Curve

Life = 3,000 hours B-10
Speed = 100 RPM output

To adjust for loads and speeds other than shown on curve:

$$\text{Adjusted Life (hrs)} = 3,000 \left(\frac{100 \text{ RPM}}{\text{Speed (Adjusted)}} \right) \times \left(\frac{\text{Load (Curve)}}{\text{Load (Adjusted)}} \right)^{10/3}$$

Bearing Curve



S 1 CK 3 3 S 4

S – Torque-Hub® Shaft Output

1 – Series

Motor Mount

3 – S.A.E. "B" (4.005/4.001) Pilot
4 – S.A.E. "C" (5.005/5.001) Pilot (4:1 ratio, 14T spline only)
6 – S.A.E. "A" (3.256/3.251) Pilot

Reduction

4 – 4.17:1
5 – 5.29:1
6 – 6.21:1

Single Reduction

Input

3 – 13T, 16/32 Spline
***4** – 14T, 12/24 Spline
***6** – 6 B Parallel Side Spline Major Dia: 1.00
 * Longer length for 5:1 and 6:1 ratios.

	Shaft	Hub	
	Configuration	Hub Flange Thickness	Flange B.C.
CK	2.125" Dia. 16T, 8/16 Spline	.84	(4) .695/.685 Holes 6.375 Dia. B.C.
CL	2.25" Dia. 1/2" Keyway	.84	(4) .695/.685 Holes 6.375 Dia. B.C.

æerlikon
fairfield

Fairfield Manufacturing Company, Inc.
 First in Custom Gears and Drive Systems
 www.fairfieldmfg.com