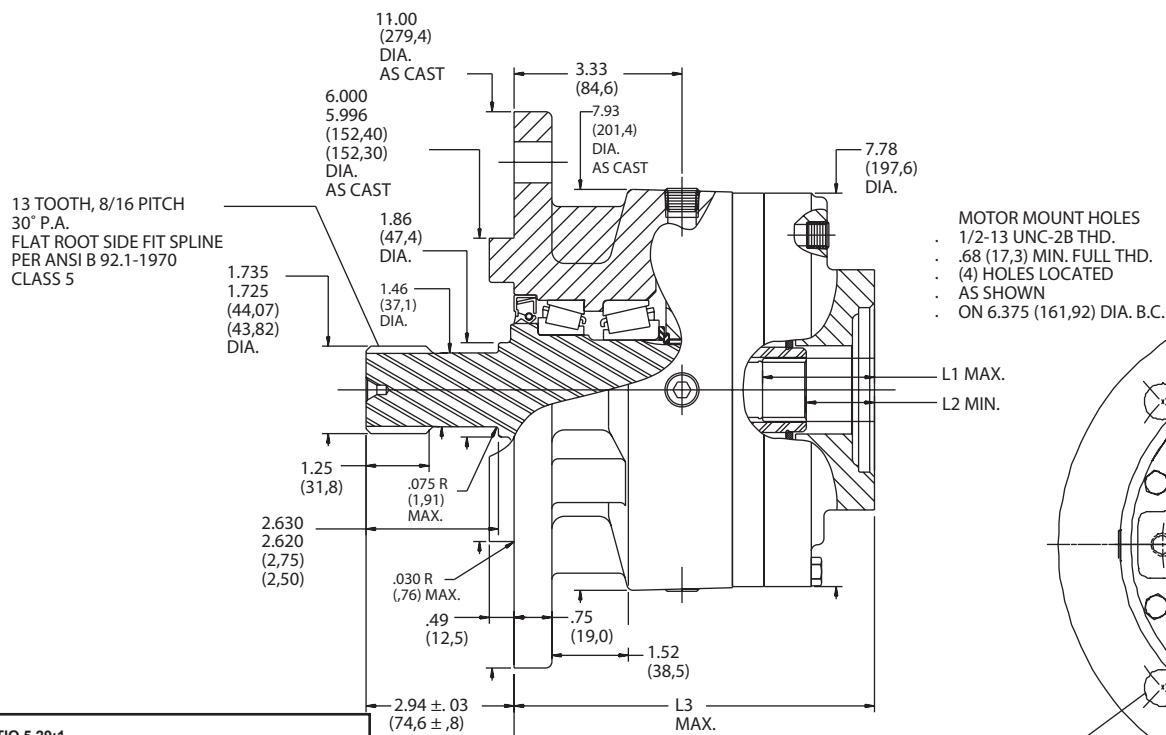
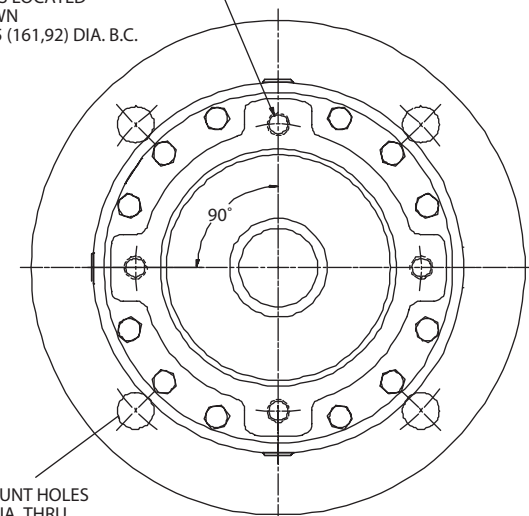


**TORQUE-HUB**  
Planetary Final Drives

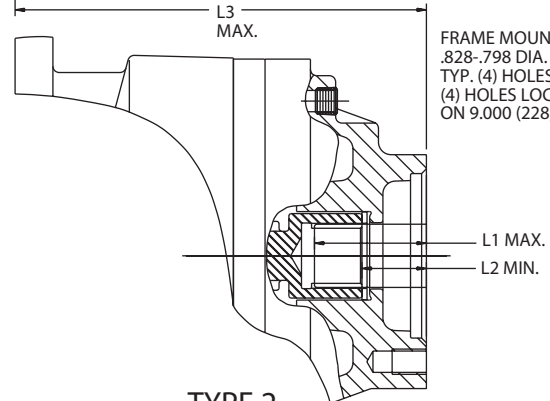


- MOTOR MOUNT HOLES
- 1/2-13 UNC-2B THD.
- .68 (17,3) MIN. FULL THD.
- (4) HOLES LOCATED AS SHOWN
- ON 6.375 (161,92) DIA. B.C.



- FRAME MOUNT HOLES
- .828-.798 DIA. THRU
- TYP. (4) HOLES EQ. SPACED
- (4) HOLES LOCATED ON 9.000 (228,60) DIA. B.C.

TYPE 1  
SAE "A" MOUNT



TYPE 2  
SAE "C" MOUNT

RATIO 3.50:1					RATIO 5.29:1				
INPUT	L1	L2	L3	MOUNT	INPUT	L1	L2	L3	MOUNT
13T	2.22 (56,4MM)	.91 (23,1MM)	7.18 (182,3MM)	TYPE1	13T	2.22 (56,4MM)	.94 (23,9MM)	7.18 (182,3MM)	TYPE1
14T	2.22 (56,4MM)	1.25 (31,6MM)	7.18 (182,3MM)	TYPE1	14T	2.22 (56,4MM)	1.19 (30,2MM)	8.19 (208,1MM)	TYPE2
15T	--	--	--	--	15T	--	--	--	--
6B	--	--	--	--	6B	2.22 (56,4MM)	1.19 (30,2MM)	8.19 (208,1MM)	TYPE2
RATIO 4.17:1					RATIO 6.21:1				
INPUT	L1	L2	L3	MOUNT	INPUT	L1	L2	L3	MOUNT
13T	2.22 (56,4MM)	.91 (23,1MM)	7.18 (182,3MM)	TYPE1	13T	1.72 (43,7MM)	.89 (22,6MM)	7.18 (182,3MM)	TYPE1
14T	2.22 (56,4MM)	1.25 (31,6MM)	7.18 (182,3MM)	TYPE1	14T	2.22 (56,4MM)	1.19 (30,2MM)	8.19 (208,1MM)	TYPE2
15T	2.22 (56,4MM)	.91 (23,1MM)	7.18 (182,3MM)	TYPE1	15T	---	---	---	---
6B	2.22 (56,4MM)	1.05 (26,7MM)	7.18 (182,3MM)	TYPE1	6B	---	---	---	---

**oerlikon**  
**fairfield**

Catalog prints are representative of the units.  
Before final design request a certified print from Fairfield.

NOTE: MM SHOWN IN ( )  
MOTOR CAVITY DIMENSIONS VARY WITH MODEL

OTHER MODELS ALSO AVAILABLE  
FAIRFIELD BRAKE AVAILABLE

## S1CD

### Performance Data

Continuous	Intermittent	Peak
15,000 lb-in	30,000 lb-in	40,000 lb-in
1,250 lb-ft	2,500 lb-ft	3,333 lb-ft
1,690 Nm	3,381 Nm	4,508 Nm
172 kg-m	345 kg-m	460 kg-m

For ultimate torque and horsepower capacities, contact a Torque-Hub® representative.

### Speed Limitations

**Input Speed:** 5,000 RPM Maximum Intermittent

Contact Fairfield for specific speed information.

### Weight

**Approximately** 60 lbs (27 kg)

Note: Specific models will change weights.

### S1CD Model Formula

### Oil

Fill to half full with EP-90 oil on most applications.

**Approximate Volume** 12 oz. (355 cm<sup>3</sup>)

Note: Oil level and type will vary with specific model and application.

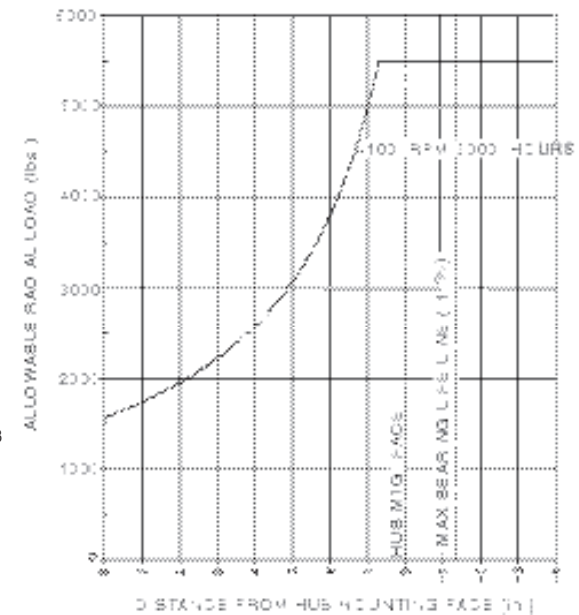
### Conditions of Bearing Curve

**Life** = 3,000 hours B-10  
**Speed** = 100 RPM output

To adjust for loads and speeds other than shown on curve:

$$\text{Adjusted Life (hrs)} = 3,000 \left( \frac{100 \text{ RPM}}{\text{Speed (Adjusted)}} \right) \times \left( \frac{\text{Load (Curve)}}{\text{Load (Adjusted)}} \right)^{10/3}$$

### Bearing Curve



**S 1 CD 3 3 S 5**

**S** – Torque-Hub® Shaft Output

**1** – Series

### Motor Mount

- 3** – S.A.E. "B" (4.005/4.001) Pilot
- 4** – S.A.E. "C" (5.005/5.001) Pilot /4 - Bolt
- 6** – S.A.E. "A" (3.256/3.251) Pilot /2 and 4 - Bolt

### Reduction

- 3** – 3.50:1
- 4** – 4.17:1
- 5** – 5.29:1
- 6** – 6.21:1

### Single Reduction

### Input

- 3** – 13T, 16/32 Spline
- \*4** – 14T, 12/24 Spline
- \*6** – 6 B parallel Side Spline  
Major Dia: 1.00
- \*8** – 15T, 16/32 Spline
- \* Longer length for 5:1 and 6:1 ratios.

	Shaft	Hub	
	Configuration	Hub Flange Thickness	Flange B.C.
<b>CD</b>	1.735" Dia. 13T, 8/16 Spline	.75"	(4) .828/.798 Holes 9.000 B.C.

**æerlikon**  
**fairfield**

Fairfield Manufacturing Company, Inc.

First in Custom Gears and Drive Systems

www.fairfieldmfg.com