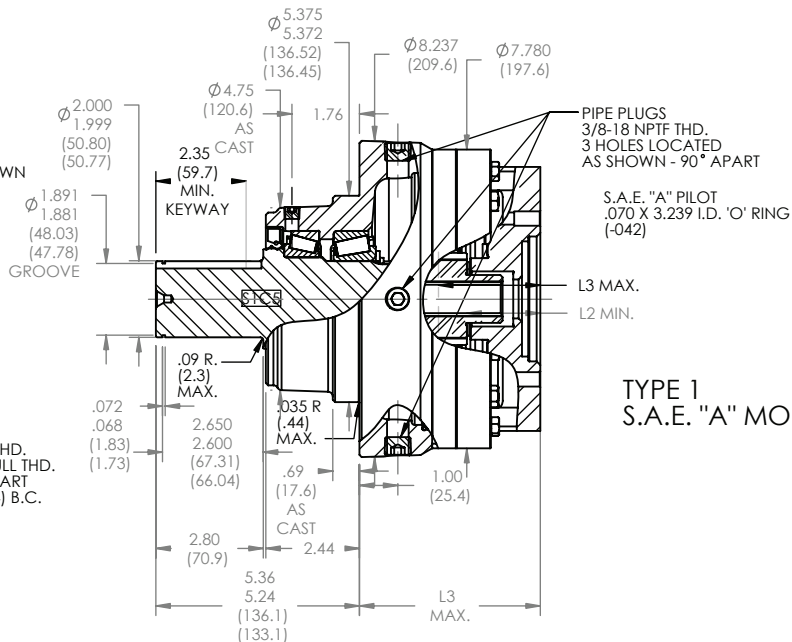
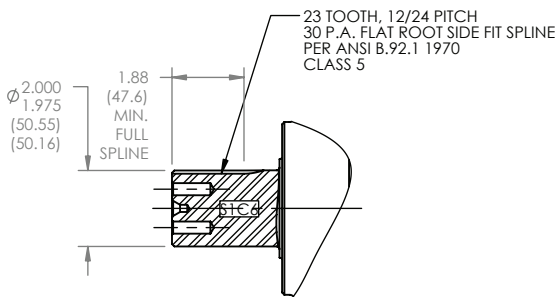
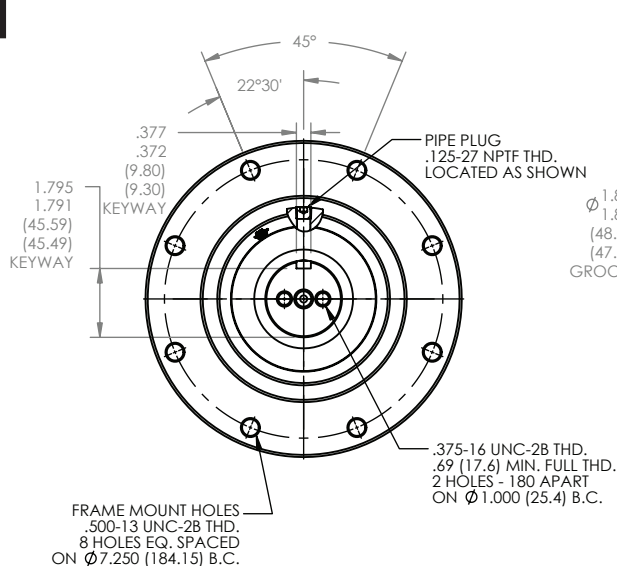
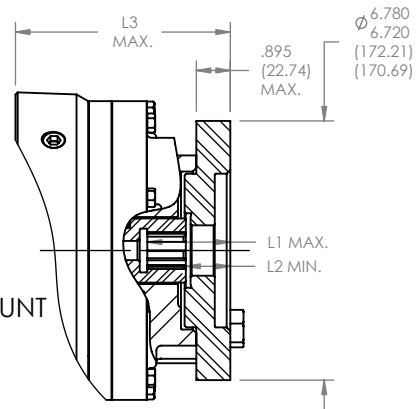
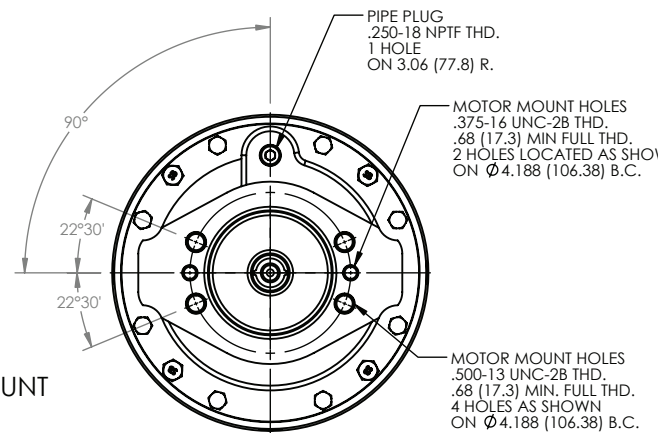


1 Series  
**S1C5**  
 Application Sheet

**TORQUE-HUB**  
 Planetary Final Drives



TYPE 1  
 S.A.E. "A" MOUNT



TYPE 2  
 S.A.E. "B" MOUNT

RATIO	3.50:1				MOUNT	INPUT	5.29:1			MOUNT
	L1	L2	L3	L1			L2	L3		
13T	2.22 (56.4)	.91 (23.1)	4.77 (121.2)	2.22 (56.4)	TYPE 1	13T	2.22 (56.4)	.94 (23.9)	4.77 (121.2)	TYPE 1
14T	2.22 (56.4)	1.24 (31.5)	4.77 (121.2)	2.22 (56.4)	TYPE 1	14T	2.22 (56.4)	1.09 (27.6)	5.66 (143.7)	TYPE 2
15T	-	-	-	-	-	15T	-	-	-	-
6B	-	-	-	2.22 (56.4)	-	6B	2.22 (56.4)	1.09 (27.6)	5.66 (143.7)	TYPE 2
RATIO	4.17:1				MOUNT	INPUT	6.21:1			MOUNT
	L1	L2	L3	L1			L2	L3		
13T	2.22 (56.4)	.91 (23.1)	4.77 (121.2)	1.75 (44.5)	TYPE 1	13T	1.75 (44.5)	.89 (22.6)	4.77 (121.2)	TYPE 1
14T	2.22 (56.4)	1.25 (31.6)	4.77 (121.2)	2.22 (56.4)	TYPE 1	14T	2.22 (56.4)	1.09 (27.6)	5.66 (143.7)	TYPE 2
15T	2.22 (56.4)	.91 (23.1)	4.77 (121.2)	-	TYPE 1	15T	-	-	-	-
6B	2.22 (55.4)	1.05 (23.7)	4.77 (121.2)	-	TYPE 1	6B	-	-	-	-

**æerlikon**  
 fairfield

Catalog prints are representative of the units.  
 Before final design request a certified print from Fairfield.

NOTE: MM SHOWN IN ( )  
 MOTOR CAVITY DIMENSIONS VARY WITH MODEL

OTHER MODELS ALSO AVAILABLE  
 FAIRFIELD BRAKE AVAILABLE

## S1C5

### Performance Data

Continuous	Intermittent	Peak
15,000 lb-in	30,000 lb-in	40,000 lb-in
1,250 lb-ft	2,500 lb-ft	3,333 lb-ft
1,690 Nm	3,381 Nm	4,508 Nm
172 kg-m	345 kg-m	460 kg-m

For ultimate torque and horsepower capacities, contact a Torque-Hub® representative.

### Speed Limitations

**Input Speed:** 5,000 RPM Maximum Intermittent

Contact Fairfield for specific speed information.

### Weight

**Approximately** 60 lbs (27 kg)

Note: Specific models will change weights.

### S1C5 Model Formula

**S** – Torque-Hub® Shaft Output

**1** – Series

	Shaft		Hub	
	Configuration	Hub Flange Thickness	Flange B.C.	
C5	2.00" Dia. 3/8" Keyway	No Flange	(8) 1/2-13 Holes 7.250 B.C.	
C6	1.990" Dia. 23T, 12/24 Spline	No Flange	(8) 1/2-13 Holes 7.250 B.C.	

**æerlikon**  
**fairfield**

Fairfield Manufacturing Company, Inc.

First in Custom Gears and Drive Systems

www.fairfieldmfg.com

### Oil

Fill to half full with 90 weight gear lube with EP additive on most applications.

**Approximate Volume** 12 oz. (355 cm<sup>3</sup>)

Note: Oil level and type will vary with specific model and application.

### Conditions of Bearing Curve

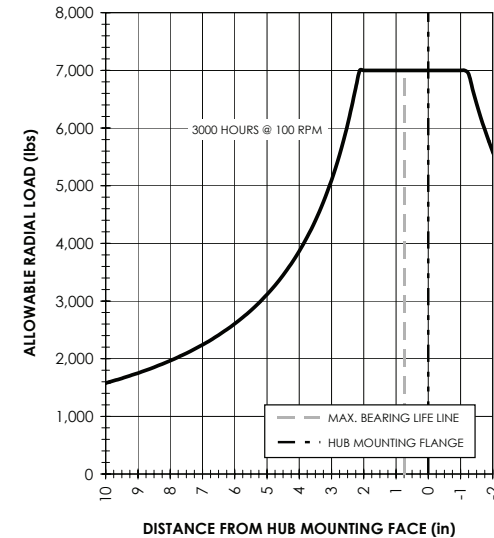
**Life** = 3,000 hours B-10

**Speed** = 100 RPM output

To adjust for loads and speeds other than shown on curve:

$$\text{Adjusted Life (hrs)} = 3,000 \left( \frac{100 \text{ RPM}}{\text{Speed (Adjusted)}} \right) \times \left( \frac{\text{Load (Curve)}}{\text{Load (Adjusted)}} \right)^{10/3}$$

### Bearing Curve



**S 1 C5 6 4 S 5**

### Input

**3** – 13T, 16/32 Spline

**\*4** – 14T, 12/24 Spline

**\*6** – 6B Parallel Side Spline

Major Dia.: 1.00

\* Longer length for 5:1 and 6:1 ratios.

### Reduction

**3** – 3.50:1

**4** – 4.17:1

**5** – 5.29:1

**6** – 6.21:1

### Single Reduction

### Motor Mount

**3** – S.A.E. "B" (4.005/4.001) Pilot

**4** – S.A.E. "C" (5.005/5.001) Pilot

**6** – S.A.E. "A" (3.256/3.251) Pilot