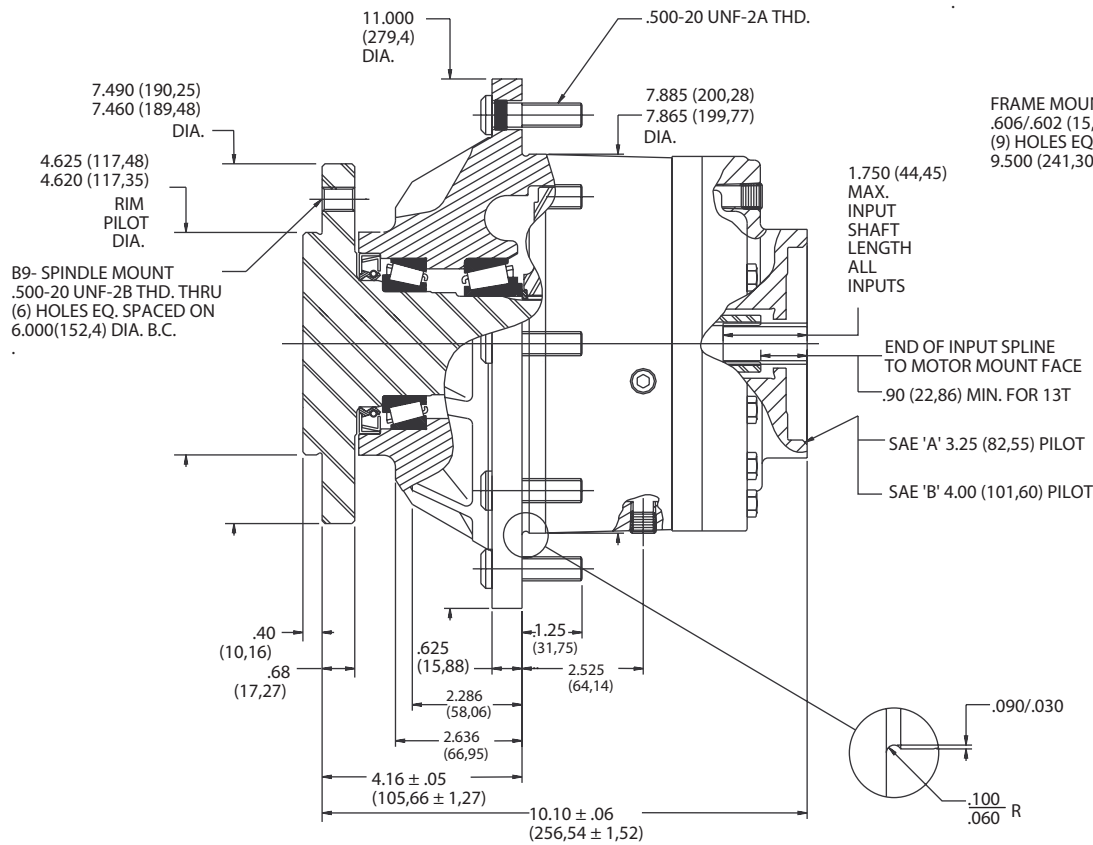
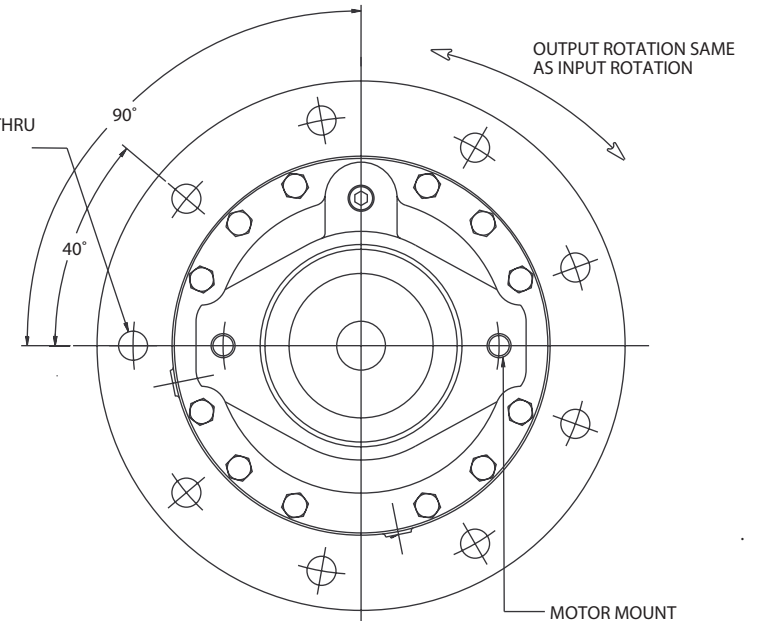


**TORQUE-HUB®**  
Planetary Final Drives

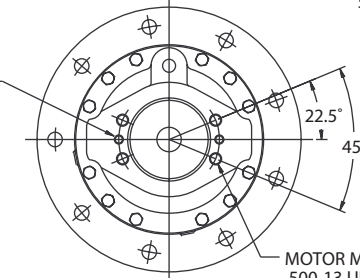


FRAME MOUNT HOLES  
.606/.602 (15,39/15,29) DIA. THRU  
(9) HOLES EQ. SPACED ON  
9.500 (241,30) DIA. B.C.



SAE "B"  
MOUNT

MOTOR MOUNT  
.375-16 UNC-2B THD.  
.68 (17,27) MIN. FULL THD..  
(2) HOLES 180°  
APART ON  
4.188 (106,38) DIA. B.C.



SAE "A"  
MOUNT



Catalog prints are representative of the units.  
Before final design request a certified print from Fairfield.

NOTE: MM SHOWN IN ( )  
MOTOR CAVITY DIMENSIONS VARY WITH MODEL

OTHER MODELS ALSO AVAILABLE  
FAIRFIELD BRAKE AVAILABLE

## S1B9

### Performance Data

Continuous	Intermittent	Peak
15,000 lb-in	30,000 lb-in	40,000 lb-in
1,250 lb-ft	2,500 lb-ft	3,333 lb-ft
1,690 Nm	3,381 Nm	4,508 Nm
172 kg-m	345 kg-m	460 kg-m

For ultimate torque and horsepower capacities, contact a Torque-Hub® representative.

### Speed Limitations

**Input Speed:** 4,000 RPM Maximum Intermittent

### Weight

**Approximately** 84 lbs (38 kg)

Note: Specific models will change weights.

### S1B9 Model Formula

### Oil

Fill to half full with 90 weight gear lube with EP additive on most applications.

**Approximate Volume** 17 oz. (503 cm<sup>3</sup>)

Note: Oil level and type will vary with specific model and application.

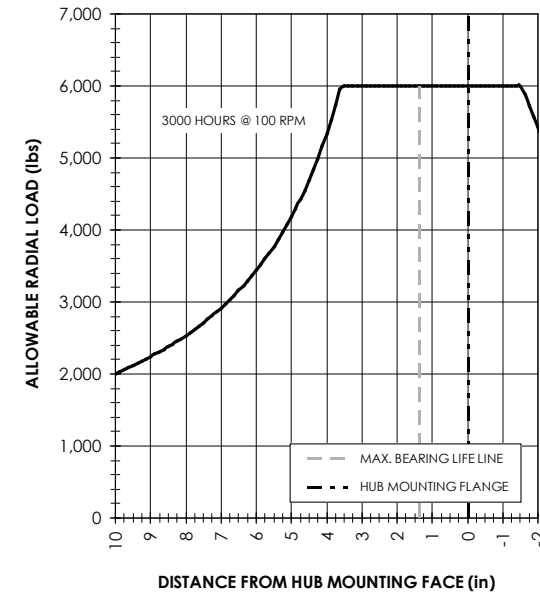
### Conditions of Bearing Curve

**Life** = 3,000 hours B-10  
**Speed** = 100 RPM output

To adjust for loads and speeds other than shown on curve:

$$\text{Adjusted Life (hrs)} = 3,000 \left( \frac{100 \text{ RPM}}{\text{Speed (Adjusted)}} \right) \times \left( \frac{\text{Load (Curve)}}{\text{Load (Adjusted)}} \right)^{10/3}$$

### Bearing Curve



### S – Torque-Hub® Spindle Output

#### 1 – Series

	Spindle		Hub	
	Flange Mounting Dia.	B.C.	Mounting Dia.	Flange B.C.
B9	4.625 4.620	(6) 1/2-20 6.000 B.C.	7.885 7.865	(9) .606/.602 9.500 B.C.

**oerlikon**  
**fairfield**  
 Fairfield Manufacturing Company, Inc.  
 First in Custom Gears and Drive Systems

www.fairfieldmfg.com

**S 1 B 9 4 0 3 3 3 1**

#### Studs

**0** – Not Included  
**4** – 1/2-20x1.875 in.  
 (for cast iron hub with .606/.602 holes)  
**G** – 9/16 - 18 x 2.265

#### Special Features

**0** – Not Available

**Input**  
**3** – 13T, 16/32 Spline

#### Motor Mount

**2** – S.A.E. "A" (3.255/3.251) pilot  
 2-bolt and 4-bolt  
**3** – S.A.E. "B" (4.005/4.001) pilot  
 2-bolt

**Reduction**  
**19** – 19.25:1  
**25** – 25.85:1  
**31** – 31.05:1  
**36** – 36.13:1  
**41** – 41.25:1  
**48** – 48.33:1  
**50** – 50.29:1  
**59** – 58.89:1  
**69** – 69.00:1