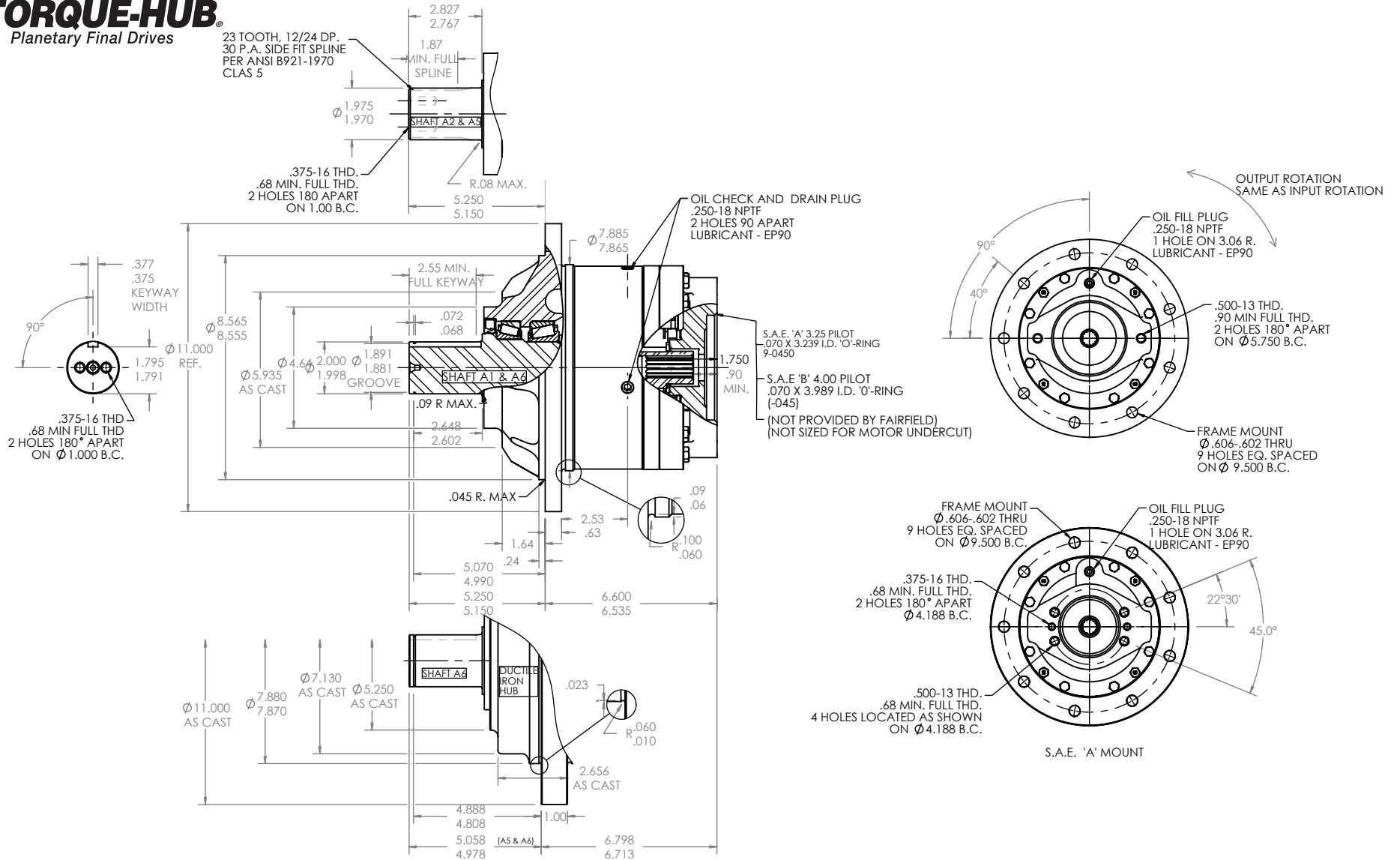


TORQUE-HUB®
Planetary Final Drives

23 TOOTH, 12/24 DP.
30 P.A. SIDE FIT SPLINE
PER ANSI B921-1970
CLAS 5



æerlikon
fairfield

Catalog prints are representative of the units.
Before final design request a certified print from Fairfield.

NOTE: MM SHOWN IN ()
MOTOR CAVITY DIMENSIONS VARY WITH MODEL

OTHER MODELS ALSO AVAILABLE
FAIRFIELD BRAKE AVAILABLE

S1A

Performance Data

Continuous	Intermittent	Peak
15,000 lb-in	30,000 lb-in	40,000 lb-in
1,250 lb-ft	2,500 lb-ft	3,333 lb-ft
1,690 Nm	3,381 Nm	4,500 Nm
172 kg-m	345 kg-m	460 kg-m

For ultimate torque and horsepower capacities, contact a Torque-Hub® representative.

Speed Limitations

Input Speed: 4,000 RPM Maximum Intermittent

(Contact Fairfield for specific speed information.)

Weight

Approximately 84 lbs (36.6 kg)

Note: Specific models will change weights.

S1A Model Formula

Oil

Fill to half full with 90 weight gear lube with EP additive on most applications.

Approximate Volume 17 oz. (503 cm³)

Note: Oil level and type will vary with specific model and application.

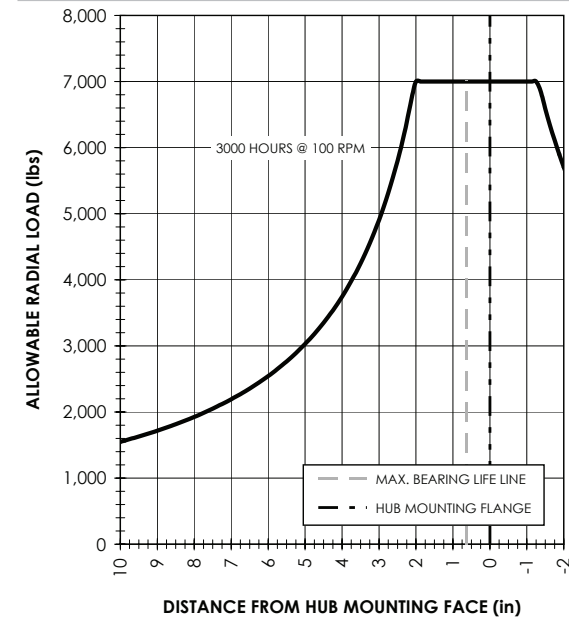
Conditions of Bearing Curve

Life = 3,000 hours B-10
Speed = 100 RPM output

To adjust for loads and speeds other than shown on curve:

$$\text{Adjusted Life (hrs)} = 3,000 \left(\frac{100 \text{ RPM}}{\text{Speed (Adjusted)}} \right) \times \left(\frac{\text{Load (Curve)}}{\text{Load (Adjusted)}} \right)^{10/3}$$

Bearing Curve



S 1 A1 3 3 36

S – Torque-Hub® Shaft Output

1 – Series

	Shaft		Hub	
	Configuration	Hub Flange Thickness	Flange B.C.	
A1	2.00" Dia. 3/8" Keyway	.62	(9) .606/.602 Holes 9.500 Dia. B.C.	
A2	1.99" Dia. 23T, 12/24 Spline	.62	(9) .606/.602 Holes 9.500 Dia. B.C.	
A5	1.99" Dia. 23T, 12/24 Spline	1.0	(9) .606/.602 Holes 9.500 Dia. B.C.	
A6	2.00" Dia. 3/8" Keyway	1.0	(9) .606/.602 Holes 9.500 Dia. B.C.	

Input
3 – 13T, 16/32 Spline

Reduction

19 – 19.25:1
25 – 25.85:1
31 – 31.05:1
36 – 36.13:1
41 – 41.25:1
48 – 48.33:1
50 – 50.29:1
59 – 58.89:1
69 – 69.00:1

Motor Mount

2 – S.A.E. "A" (3.255/3.251)
3 – S.A.E. "B" (4.005/4.001)

æerlikon
fairfield

Fairfield Manufacturing Company, Inc.
First in Custom Gears and Drive Systems

www.fairfieldmfg.com