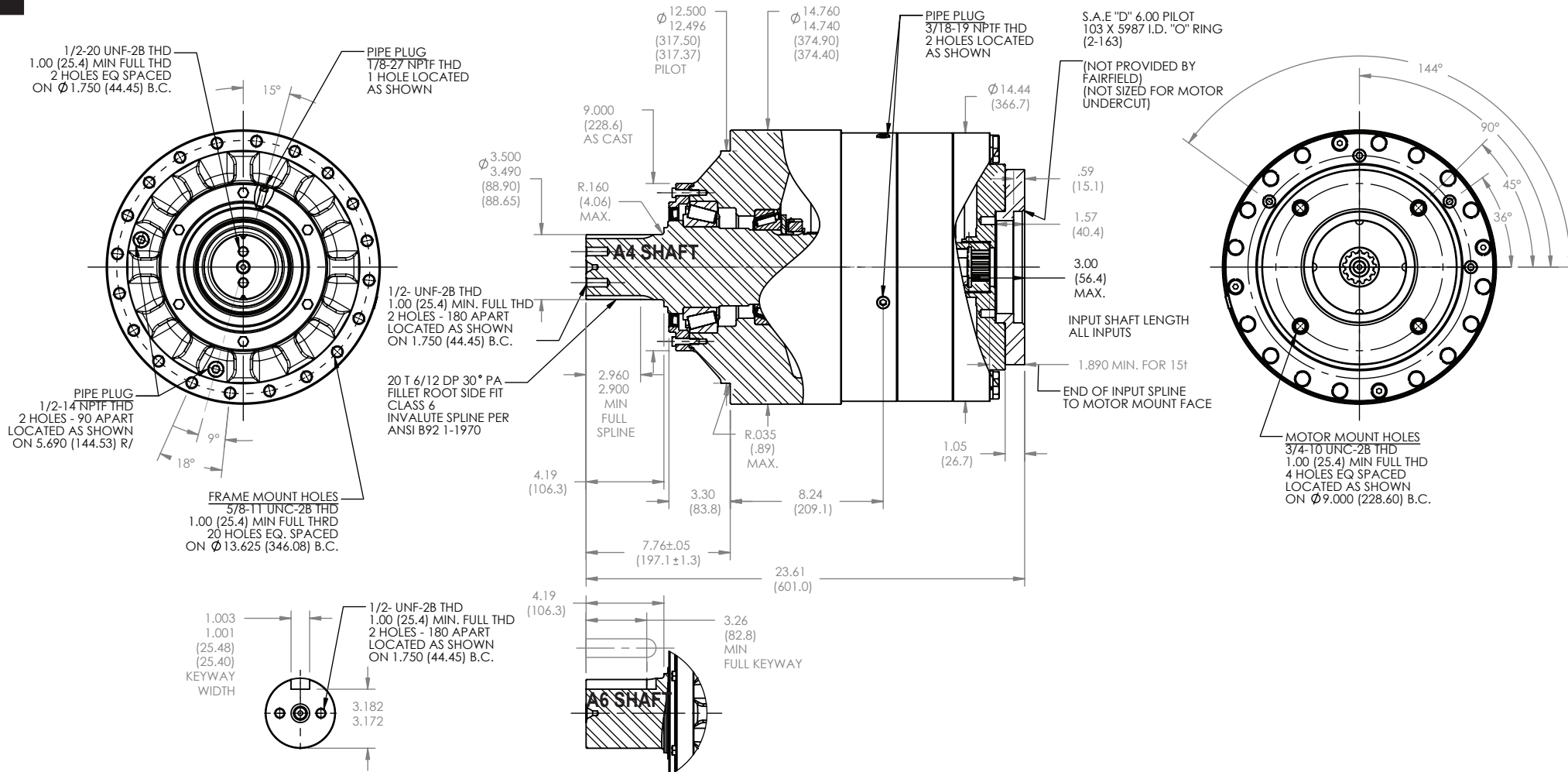


S16A4/A6 Application Sheet

TORQUE-HUB
Planetary Final Drives



œerlikon
fairfield

Catalog prints are representative of the units.
Before final design request a certified print from Fairfield.

NOTE: MM SHOWN IN ()
MOTOR CAVITY DIMENSIONS VARY WITH MODEL

OTHER MODELS ALSO AVAILABLE
FAIRFIELD BRAKE AVAILABLE

S16A4/A6

Performance Data

Continuous	Intermittent	Peak
160,000 in-lbs	320,000 in-lbs	Contact Fairfield
13,333 ft-lbs	26,667 ft-lbs	
18,079 N-m	36,158 N-m	
1,843 kg-m	3,686 kg-m	

For ultimate torque and horsepower capacities, contact a Torque-Hub® representative.

Speed Limitations

Input Speed: 4,000 RPM Maximum Intermittent

Weight

Approximately 565lbs (257kg)

Note: Specific models will change weights.

S16A4/A6 Model Formula

Oil

Fill to half full with 90 weight gear lube with EP additive on most applications.

Approximate Volume: 123oz (3637.11cc)

Note: Oil level and type will vary with specific model and application.

Conditions of Bearing Curve

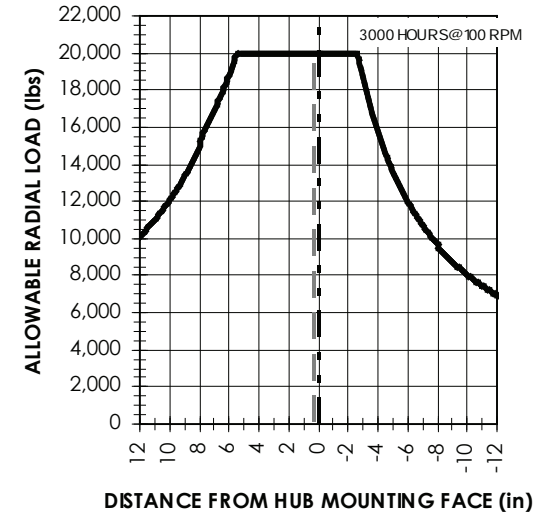
Life = 3,000 hours B10

Speed = 100 RPM output

To adjust for loads and speeds other than shown on curve:

$$\text{Adjusted Life (hrs)} = 3,000 \left(\frac{100 \text{ RPM}}{\text{Speed (Adjusted)}} \right) \left(\frac{\text{Load (Curve)}}{\text{Load (Adjusted)}} \right)^{\frac{10}{3}}$$

Bearing Curve



S - Torque-Hub Shaft Output

16 - Series

	Shaft	Hub
	Configuration	Hub Flange Thickness
A4	"3.50" Diameter 20T, 6/12	flangeless
A6	"3.75" Diameter 1" Keyway	flangeless
		Flange B.C.
		"(20) 5/8-11 Holes 13.625 Diameter B.C."
		"(20) 5/8-11 Holes 13.625 Diameter B.C."

S 16 A4 5 5 20

Input

4 - 14T, 12/24 spline
5 - 13T, 8/16 spline
9 - 15t, 8/16 spline*
*(20:1 only)

Motor Mount

4 - SAE "C" (5.005/5.001) Pilot (2 & 4 bolt)
5 - SAE "D" (6.005/6.001) Pilot (4 bolt)
E - SAE "E" (.505/6.502) Pilot (4 bolt)

Reduction

20 - 20.25
29 - 29.16
40 - 39.37

oerlikon
fairfield

Fairfield Manufacturing Company, Inc.
First in Custom Gears and Drive Systems

www.fairfieldmfg.com