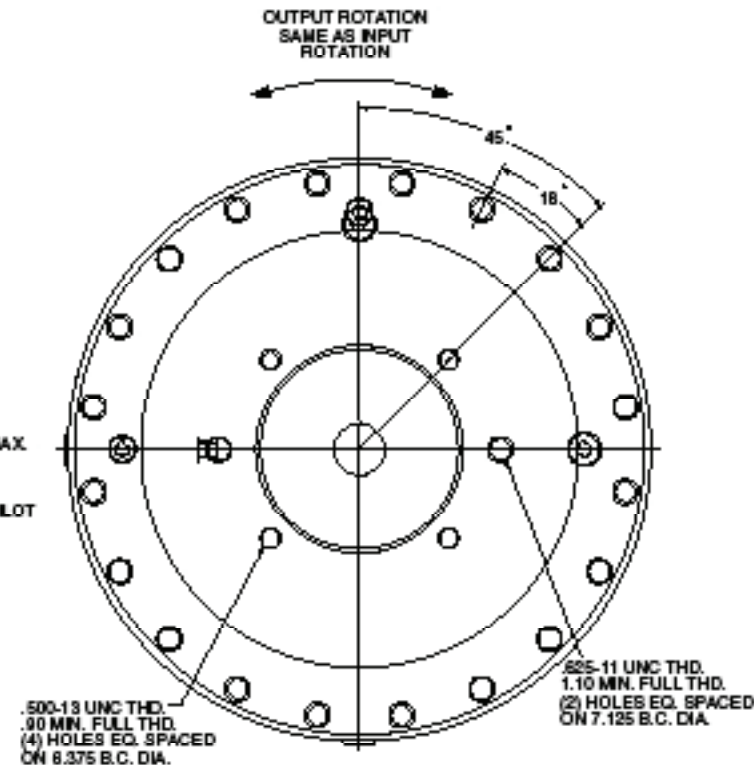
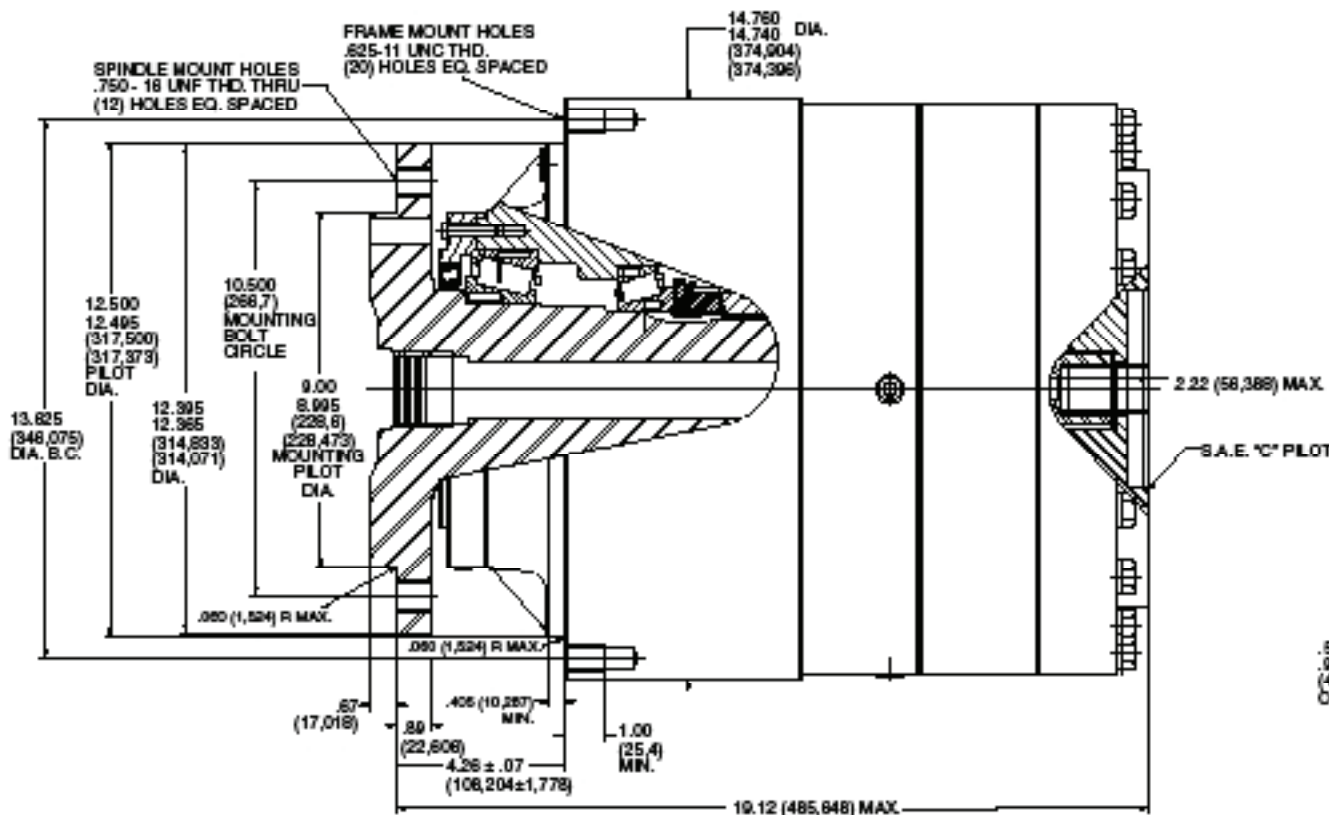


TORQUE-HUB®
Planetary Final Drives



oerlikon
fairfield

Catalog prints are representative of the units.
Before final design request a certified print from Fairfield.

NOTE: MM SHOWN IN ()
MOTOR CAVITY DIMENSIONS VARY WITH MODEL

OTHER MODELS ALSO AVAILABLE
FAIRFIELD BRAKE AVAILABLE

S12B2

Performance Data

Continuous	Intermittent	Peak
125,000 lb-in	250,000 lb-in	
10,417 ft-lb	20,833 ft-lb	Contact Fairfield
14,112 Nm	28,227 Nm	
1,440 Kg-m	2,880 Kg-m	

For ultimate torque and horsepower capacities, contact a Torque-Hub® representative. Note: Oil level and type will vary with specific model and application.

Speed Limitations

Input Speed: 5,000 RPM Maximum Intermittent

Weight

Approximately 580 lbs (263 kg)

Note: Specific models will change weights.

S12B2 Model Formula

S 12 B2 0 0 0 4 4 20

S - Torque Hub Spindle Output

12 - Series

	Spindle		Hub	
	Flange Mounting Dia.	B.C.	Mounting Dia.	B.C.
B2	9.000 8.995	(12) 3/4 - 16 10.500 B.C.	12.500 12.495	(20) 5/8-11 13.625 B.C.

Oil

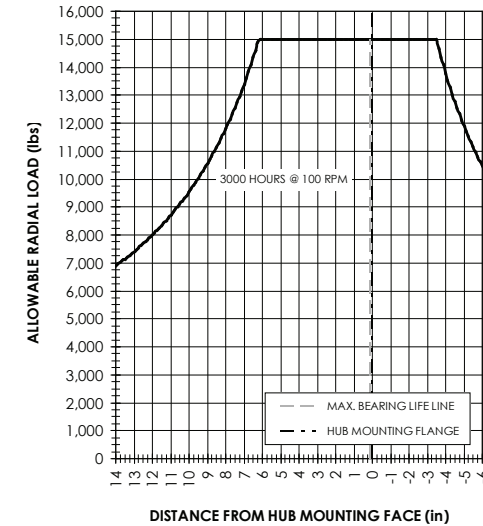
Fill to half full with 90 weight gear lube with EP additive on most applications.

Approximate Volume 123 oz.

Conditions of Bearing Curve

Contact Fairfield for Conditions of Bearing Curve.

Bearing Curve



oerlikon
fairfield
Fairfield Manufacturing Company, Inc.
First in Custom Gears and Drive Systems
www.fairfieldmfg.com

Studs
0 - Not Included

Special Features
0 - Not Included

Input
4 - 14T, 12/24 Spline
5 - 13T, 8/16 Spline

Motor Mount
4 - S.A.E. "C" (5.005/5.001) Pilot 2-Bolt and 4-Bolt
5 - S.A.E. "D" (6.005/6.001) Pilot 4-Bolt

Reduction
20 - 20.25:1
29 - 29.16:1
40 - 39.37:1