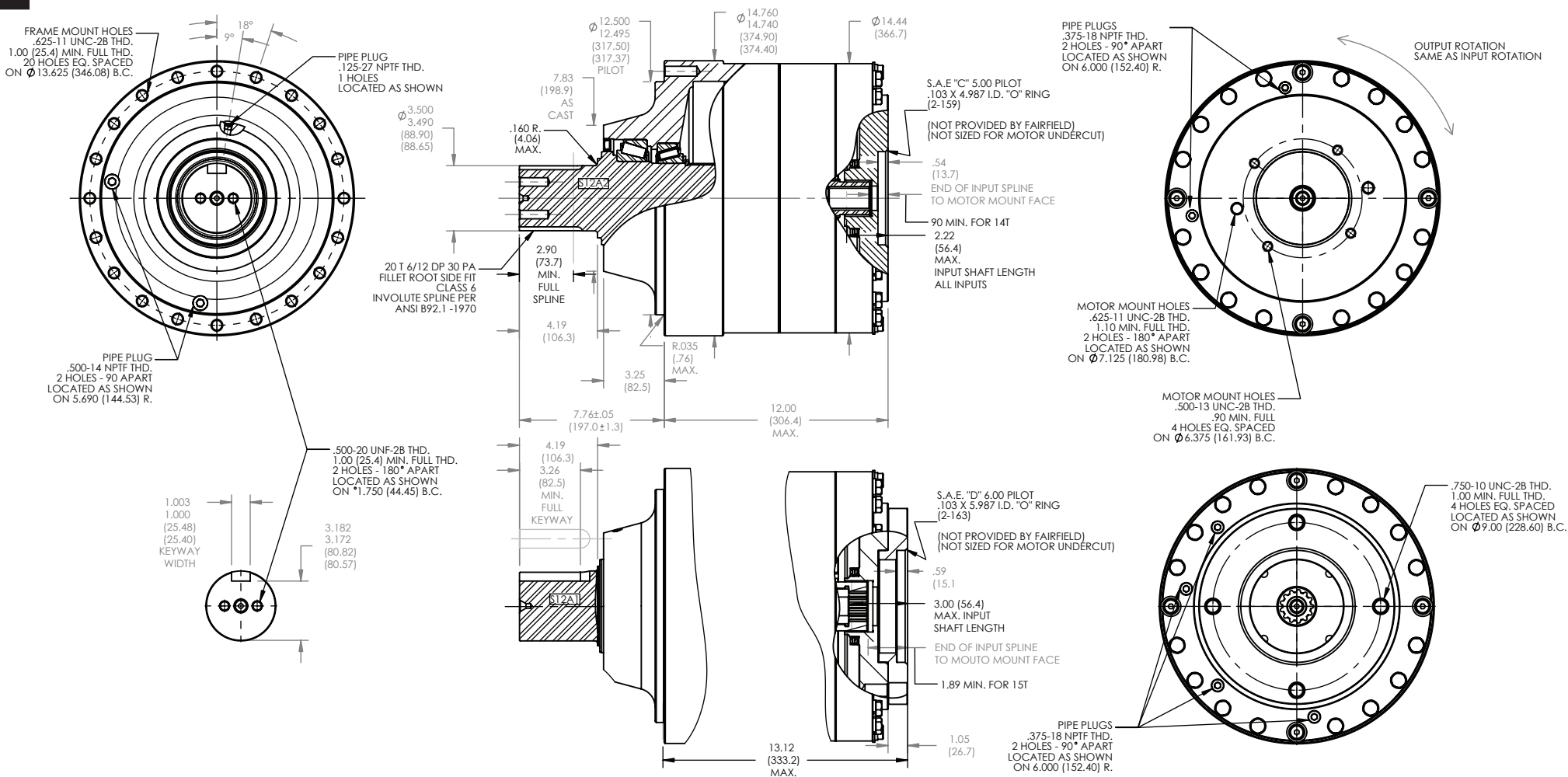


TORQUE-HUB

Planetary Final Drives



Catalog prints are representative of the units.
Before final design request a certified print from Fairfield.

NOTE: MM SHOWN IN ()
MOTOR CAVITY DIMENSIONS VARY WITH MODEL

OTHER MODELS ALSO AVAILABLE
FAIRFIELD BRAKE AVAILABLE

S12A

Performance Data

Continuous	Intermittent	Peak
125,000 lb-in	250,000 lb-in	Contact Fairfield
10,417 lb-ft	20,833 lb-ft	
14,113 Nm	28,227 Nm	
1,440 kg-m	2,880 kg-m	

For ultimate torque and horsepower capacities, contact a Torque-Hub® representative.

Speed Limitations

Input Speed: 4,000 RPM Maximum Intermittent

Weight

Approximately 503 lbs (226 kg)

S12A Model Formula

Oil

Fill to half full with 90 weight gear lube with EP additive on most applications.

Approximate Volume 123 oz. (3,639 cm³)

Note: Oil level and type will vary with specific model and application.

Conditions of Bearing Curve

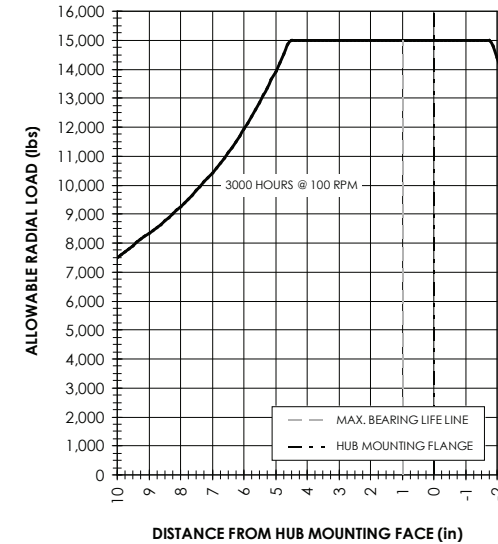
Life = 3,000 hours B-10

Speed = 100 RPM output

To adjust for loads and speeds other than shown on curve:

$$\text{Adjusted Life (hrs)} = 3,000 \left(\frac{100 \text{ RPM}}{\text{Speed (Adjusted)}} \right) \times \left(\frac{\text{Load (Curve)}}{\text{Load (Adjusted)}} \right)^{10/3}$$

Bearing Curve



S 12 A1 4 4 20

S – Torque-Hub® Shaft Output

12 – Series

	Spindle	Hub	
	Configuration	Hub Flange Thickness	Flange B.C.
A1	3.75" Dia. 1" Keyway	No Flange	(20) 5/8-11 Holes 13.625 Dia. B.C.
A2	3.50" Dia. 20T, 6/12 Spline	No Flange	(20) 5/8-11 Holes 13.625 Dia. B.C.

A4 & A6 - Heavy Duty Bearings Available Contact Fairfield

Reduction

20 – 20.25:1

29 – 29.16:1

40 – 39.37:1

Input

0 – Not Included

4 – 14T, 12/24 Spline

5 – 13T, 8/16 Spline

9 – 15T, 8/16 Spline (20:1 ONLY)

Motor Mount

4 – S.A.E. "C" (5.005/5.001) Pilot (2 & 4 Bolt)

5 – S.A.E. "D" (6.005/6.001) Pilot (4 Bolt)

E – S.A.E. "E" (6.505/6.502) Pilot (4 Bolt)

æerlikon
fairfield

Fairfield Manufacturing Company, Inc.

First in Custom Gears and Drive Systems

www.fairfieldmfg.com