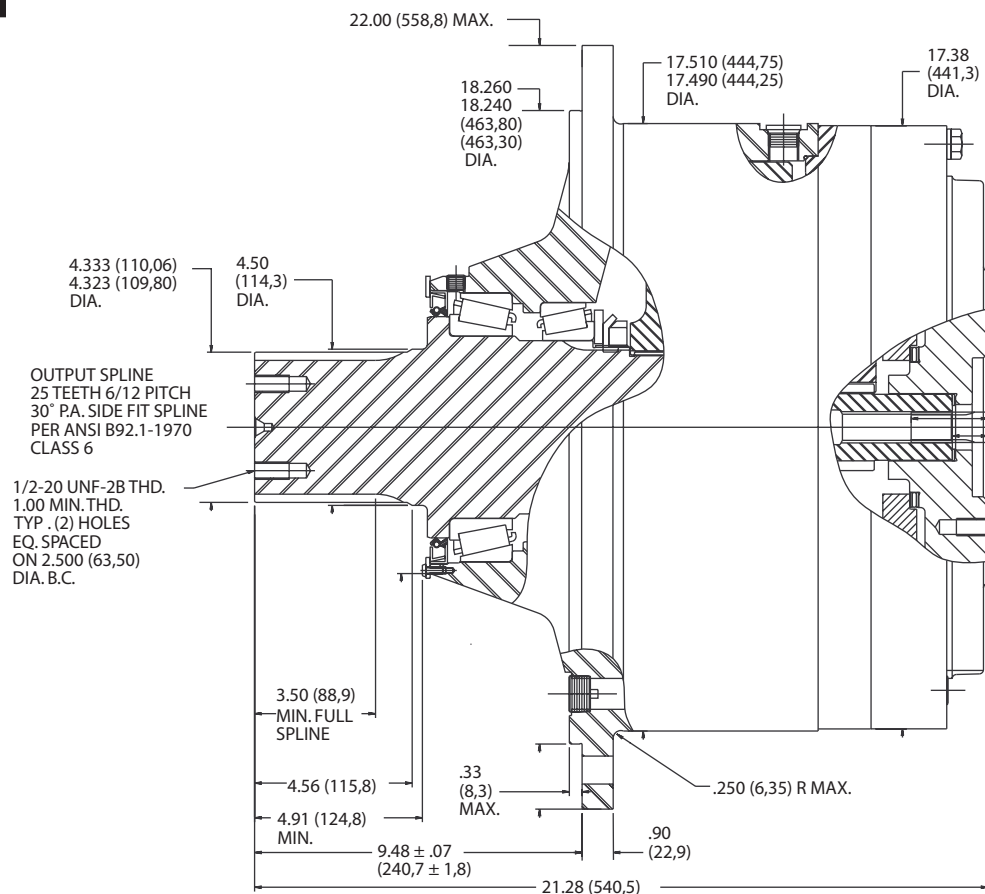


TORQUE-HUB®

Planetary Final Drives



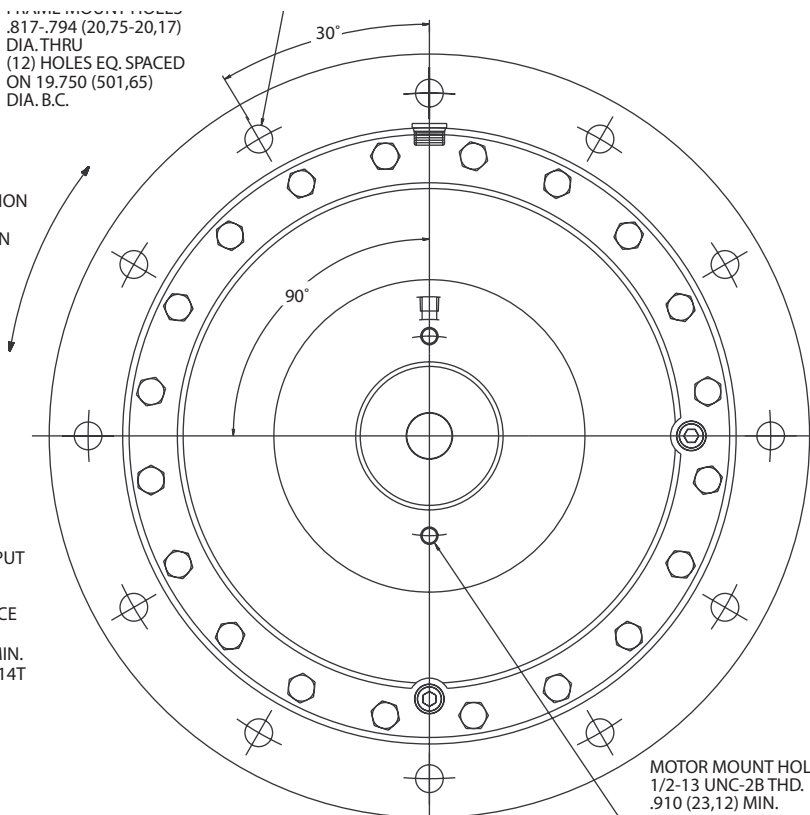
MOTOR MOUNT HOLES
.817-.794 (20,75-20,17)
DIA. THRU
(12) HOLES EQ. SPACED
ON 19.750 (501,65)
DIA. B.C.

OUTPUT ROTATION
SAME AS
INPUT ROTATION

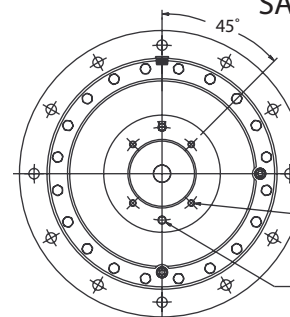
2.22 (56,4)
MAX.
INPUT
SHAFT
LENGTH
ALL
INPUTS

END OF INPUT
SPLINE TO
MOTOR
MOUNT FACE

.96 (24,4) MIN.
FOR 13T & 14T



SAE 'B' MOUNT



SAE 'C' MOUNT

oerlikon
fairfield

Catalog prints are representative of the units.
Before final design request a certified print from Fairfield.

NOTE: MM SHOWN IN ()
MOTOR CAVITY DIMENSIONS VARY WITH MODEL

OTHER MODELS ALSO AVAILABLE
FAIRFIELD BRAKE AVAILABLE

S10A

Performance Data

Continuous	Intermittent	Peak
125,000 lb-in	250,000 lb-in	300,000 lb-in
10,417 lb-ft	20,833 lb-ft	25,000 lb-ft
14,113 Nm	28,227 Nm	33,872 Nm
1,440 kg-m	2,880 kg-m	3,456 kg-m

For ultimate torque and horsepower capacities, contact a Torque-Hub® representative.

Speed Limitations

Input Speed: 1500-1800 Maximum Intermittent

(Contact Fairfield for specific speed information.)

Weight

Approximately 700 lbs (315 kg)

Note: Specific models will change weights.

S10A Model Formula

Oil

Fill to half full with 90 weight gear lube with EP additive on most applications.

Approximate Volume 150 oz. (4,438 cm³)

Note: Oil level and type will vary with specific model and application.

Conditions of Bearing Curve

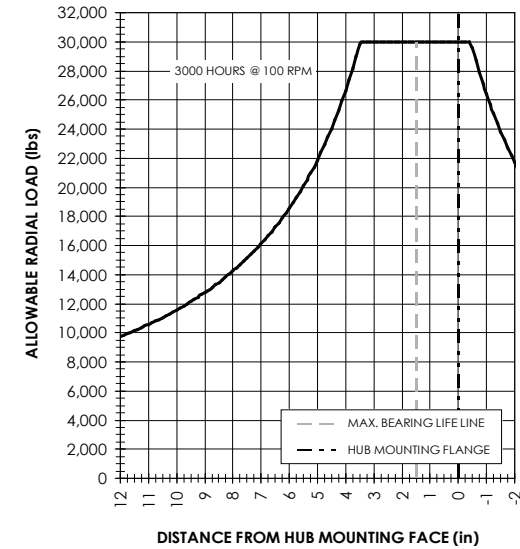
Life = 3,000 hours B-10

Speed = 100 RPM output

To adjust for loads and speeds other than shown on curve:

$$\text{Adjusted Life (hrs)} = 3,000 \left(\frac{100 \text{ RPM}}{\text{Speed (Adjusted)}} \right) \times \left(\frac{\text{Load (Curve)}}{\text{Load (Adjusted)}} \right)^{10/3}$$

Bearing Curve



S 10 AC 4 4 70

S – Torque-Hub® Shaft Output

10 – Series

	Shaft	Hub	
	Configuration	Hub Flange Thickness	Flange B.C.
A1	4.50 Dia. 1" Keyway	.90	(12) .817/.794 Holes 19.750 B.C.
A2	4.33 Dia. 25T, 6/12 Spline	.90	(12) .817/.794 Holes 19.750 B.C.
AC	Same as A2, except with bearing nut retention		

Reduction

44 – 44.8:1
59 – 58.4:1
70 – 70.7:1
81 – 81.3:1
99 – 99.0:1
124 – 124.2:1

Input

3 – 13T, 16/32 Spline
 (70:1 only)
4 – 14T, 12/24 Spline

Motor Mount

3 – S.A.E. "B" (4.005/4.001) Pilot (2 & 4 Bolt)
4 – S.A.E. "C" (5.005/5.001) Pilot (2 & 4 Bolt)

æerlikon
fairfield

Fairfield Manufacturing Company, Inc.

First in Custom Gears and Drive Systems

www.fairfieldmfg.com