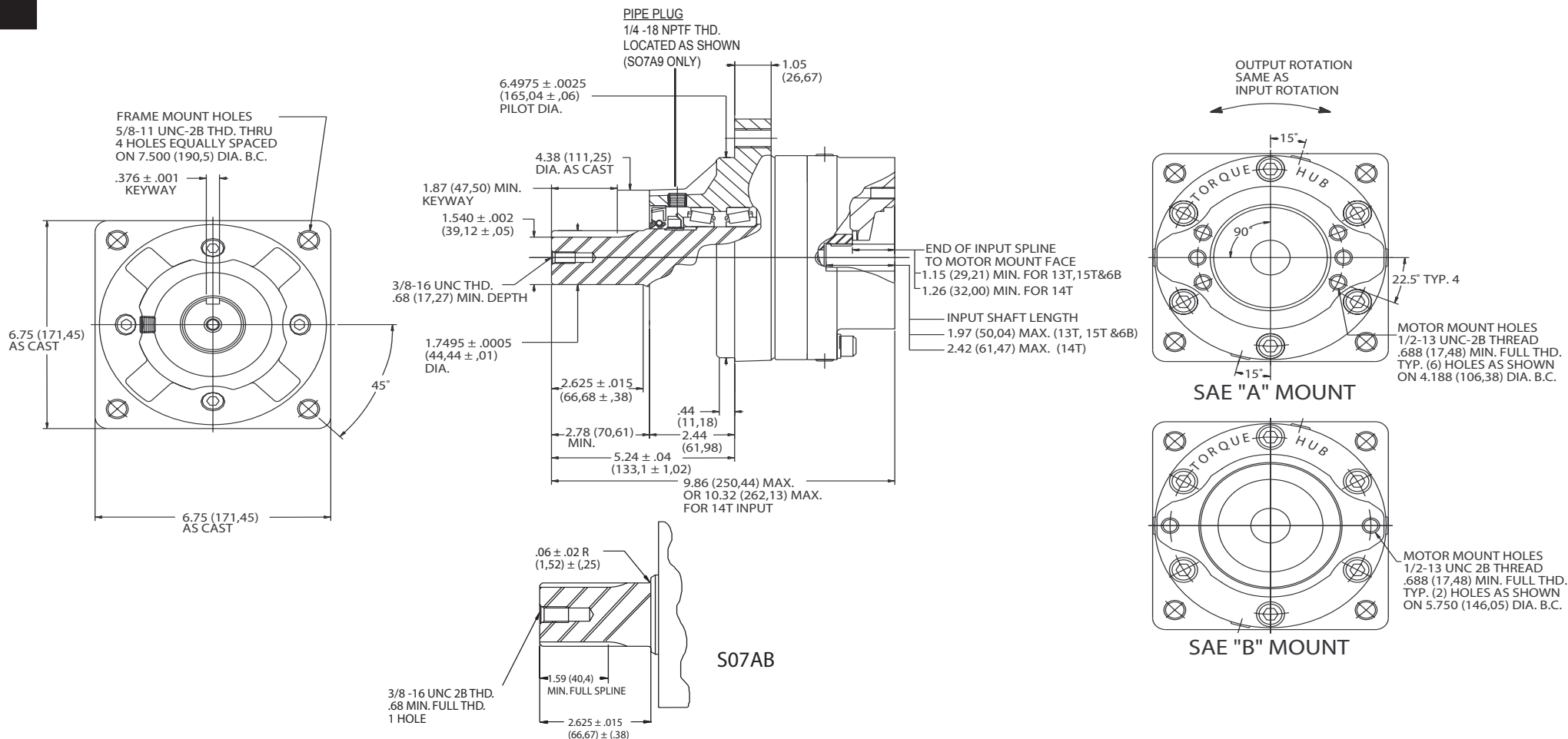


TORQUE-HUB[®]

Planetary Final Drives



æerlikon
fairfield

Catalog prints are representative of the units.
Before final design request a certified print from Fairfield.

NOTE: MM SHOWN IN ()
MOTOR CAVITY DIMENSIONS VARY WITH MODEL

OTHER MODELS ALSO AVAILABLE
FAIRFIELD BRAKE AVAILABLE

S07A

Performance Data

Continuous	Intermittent	Peak
7,500 lb-in	15,000 lb-in	20,000 lb-in
625 lb-ft	1,250 lb-ft	1,666.7 lb-ft
845 Nm	1,690 Nm	2,260 Nm
86 kg-m	172 kg-m	230 kg-m

For ultimate torque and horsepower capacities, contact a Torque-Hub® representative.

Speed Limitations

Input Speed: 4,000 RPM Maximum Intermittent

Contact Fairfield for specific speed information.

Weight

Approximately 45 lbs (20 kg)

Note: Specific models will change weights.

S07A Model Formula

Oil

Fill to half full with 90 weight gear lube with EP additive on most applications.

Approximate Volume 11oz. (325 cm³)

Note: Oil level and type will vary with specific model and application.

Conditions of Bearing Curve

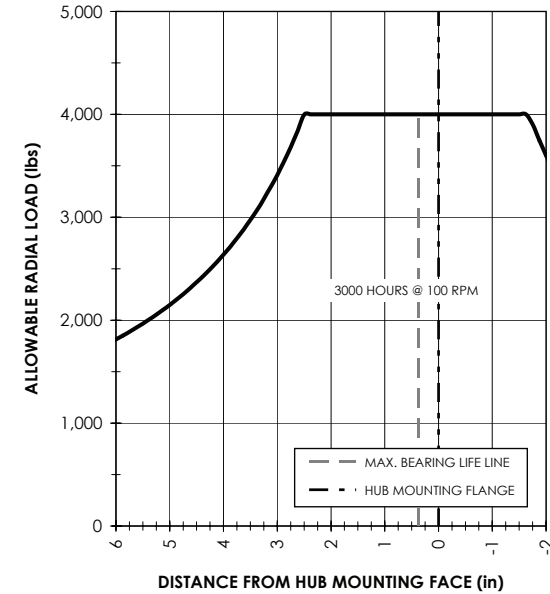
Life = 3,000 hours B-10

Speed = 100 RPM output

To adjust for loads and speeds other than shown on curve:

$$\text{Adjusted Life (hrs)} = 3,000 \left(\frac{100 \text{ RPM}}{\text{Speed (Adjusted)}} \right) \times \left(\frac{\text{Load (Curve)}}{\text{Load (Adjusted)}} \right)^{10/3}$$

Bearing Curve



S – Torque-Hub® Shaft Output

07 – Series

	Shaft	Hub	
	Configuration	Hub Flange Thickness	Flange B.C.
A2	1 3/4" Dia. 3/8" Keyway	1.05"	(4) 5/8-11 Holes 7.500 Dia. B.C.
AB	1.495" Dia. 17T, 12/24 Spline	.94"	(4) .671/.641 Thru 7.750 Dia. B.C.

Motor Input

3 – 13T, 16/32 Spline
6 – 6B Parallel Side Spline
(major dia. = 1.00 in.)

Ratio

4 – 4.105:1

Options/Features

0 – Not Included

Hydraulic Motor Mount

3 – S.A.E. "B"
(4.005/4.001) Pilot
6 – S.A.E. "A"
(3.255/3.251) Pilot
(2 and 4 bolt)

æerlikon
fairfield

Fairfield Manufacturing Company, Inc.

First in Custom Gears and Drive Systems

www.fairfieldmfg.com