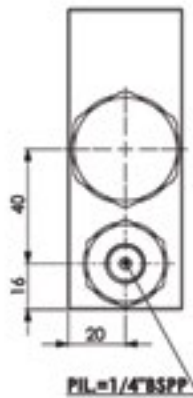
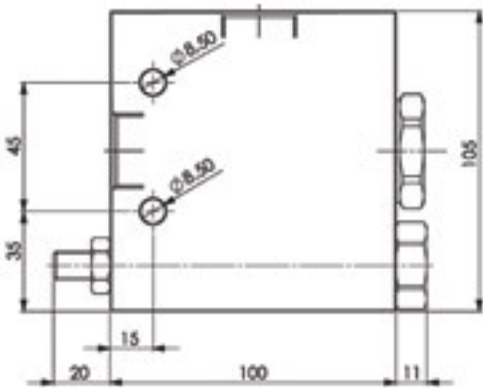
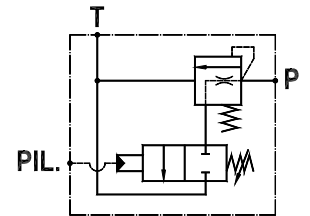
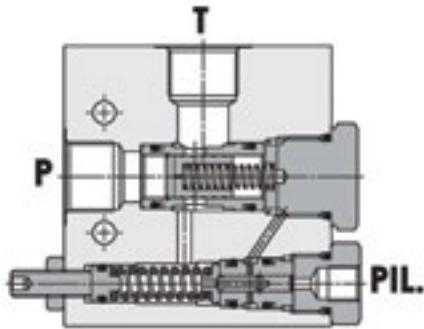




FLUID-PRESS

UNLOADING VALVES

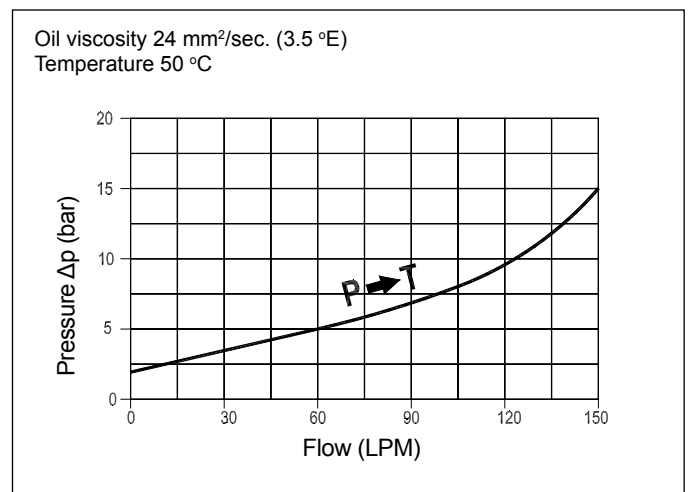
Line Mounted, Pilot Operated Unloading Valve
FPMS-P-1/2-20



Technical Specifications

Materials	Cartridge = steel, zinc plated Internal parts = hardened steel Body = high strength alloy
Rated Flow	150 LPM
Adjustment Range	50-200 bar
Standard Setting	200 bar
Pressure Inc. Per Turn	50 bar
Max. Setting	220 bar
Max. Pressure	210 bar
Weight	1.350 kg
Port Sizes	P/T = G1/2 PIL = G1/4
Adjustment Type	Leakproof screw
Oil Temperature Range	-20°C + 80°C
Recommended Filtration	Nominal max. 10 μ , ISO 4406-19/17/14 (NAS8) or less
Ambient Temperature Range	-30°C + 60°C

Pressure Drop Curves



Content is subject to change without notice. Please refer to our website for the most current product information.