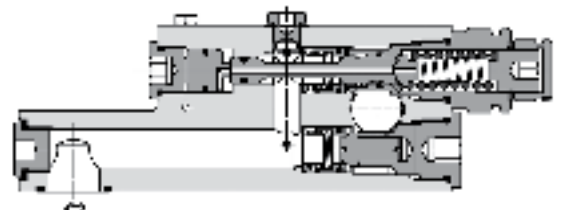
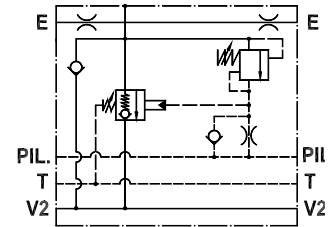
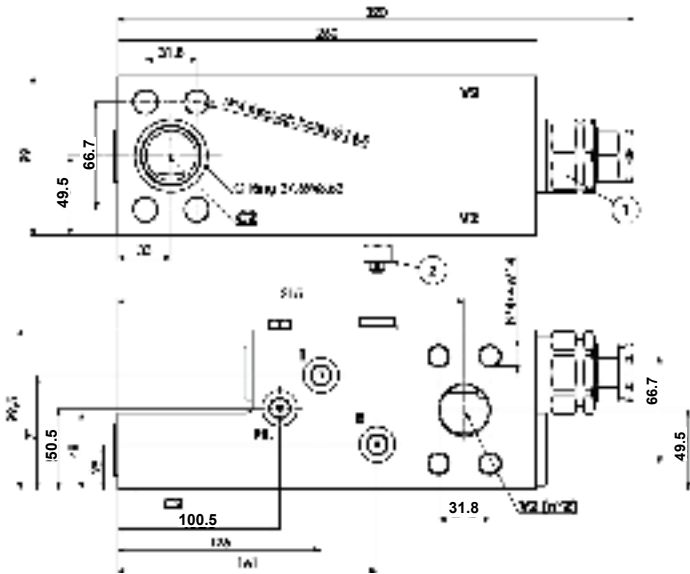




# FLOW CONTROL VALVES

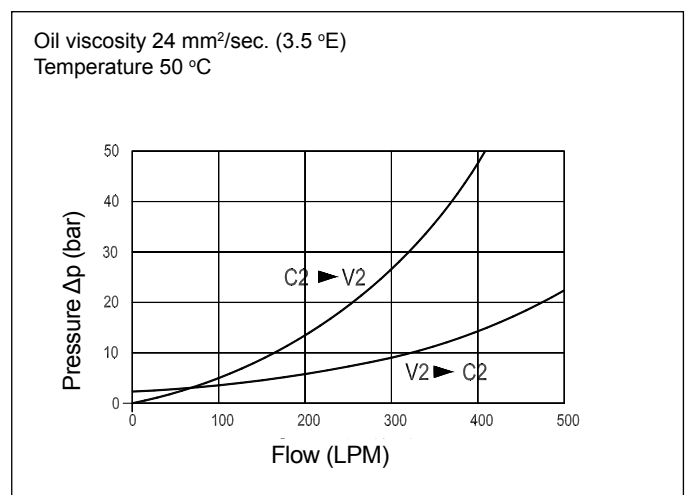
Flow, Check and Metering Valve for Boom Lifts  
 FPEXC-500S-1-1/4-1F-SAE6000-05-50



## Technical Specifications

<b>Materials</b>	Body = steel, zinc plated Internal parts = hardened steel
<b>Rated Flow</b>	up to 500 LPM
<b>Adjustment Range</b>	① = 3.5-24 bar ② = 2: 250-500 bar
<b>Max. Pressure</b>	420 bar
<b>Weight</b>	15.300 kg
<b>Port Sizes</b>	V2/C2 = 1 1/4 SAE 6000 (Code 62) E/PIL/T = G1/4
<b>Adjustment Type</b>	Leakproof screw
<b>Oil Temperature Range</b>	-20°C + 80°C
<b>Recommended Filtration</b>	Nominal max. 10µ, ISO 4406-19/17/14 (NAS8) or less
<b>Ambient Temperature Range</b>	-30°C + 60°C

## Pressure Drop Curves



Content is subject to change without notice. Please refer to our website for the most current product information.