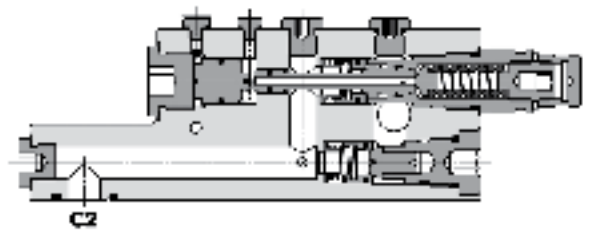
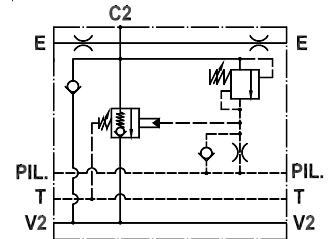
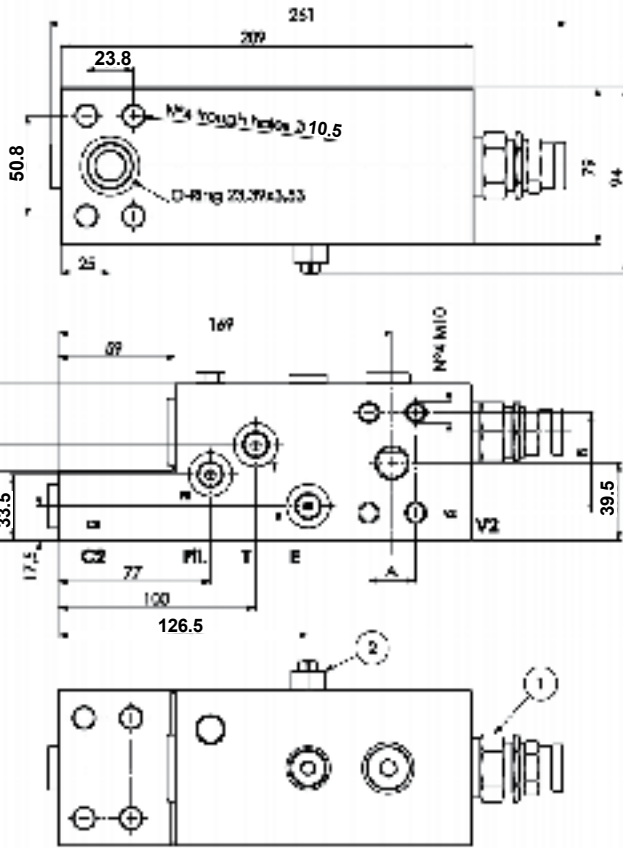




FLUID-PRESS

FLOW CONTROL VALVES

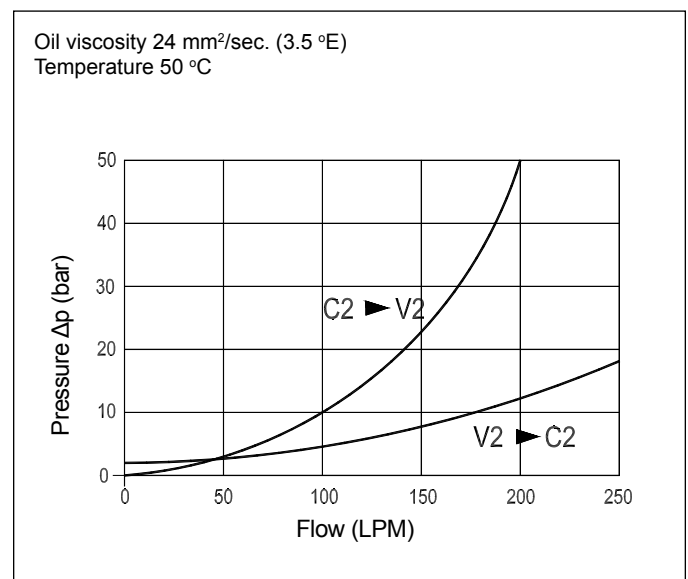
Flow, Check and Metering Valve for Boom Lifts
 FPEXC-250-S-3/4-1F-SAE6000-05-50



Technical Specifications

| | |
|----------------------------------|--|
| Materials | Body = steel, zinc plated Internal parts = hardened steel |
| Rated Flow | up to 250 LPM |
| Adjustment Range | ① = 3:5-19.5 bar ② = 250-500 bar |
| Standard Setting | ① = 7.8 bar ② = 350 bar |
| Pressure Inc. Per Turn | ① = 3.5 bar ② = 198 bar |
| Max. Pressure | 420 bar |
| Weight | 8.100 kg |
| Port Sizes | C2/V2 = G3/4 SAE 6000 E/T/PIL = G1/4 |
| Adjustment Type | Leakproof screw |
| Oil Temperature Range | -20°C + 80°C |
| Recommended Filtration | Nominal max. 10µ, ISO 4406-19/17/14 (NAS8) or less |
| Ambient Temperature Range | -30°C + 60°C |

Pressure Drop Curves



Content is subject to change without notice. Please refer to our website for the most current product information.