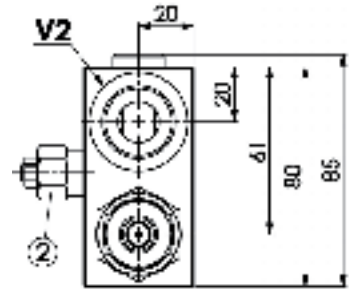
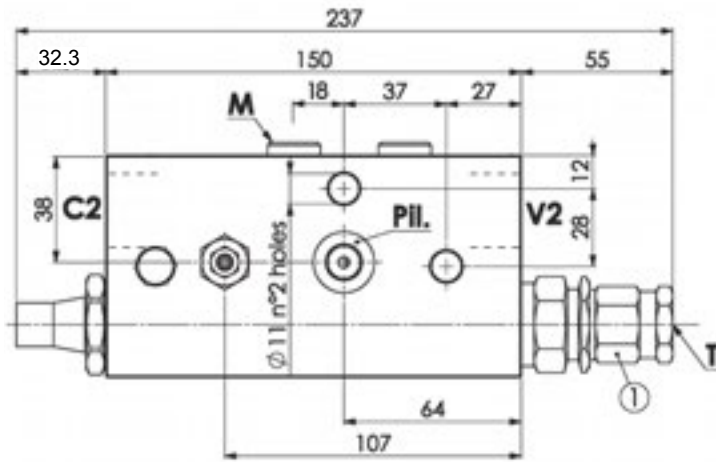
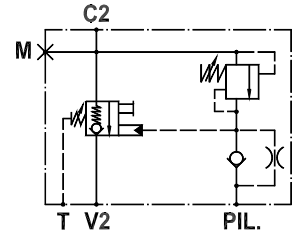
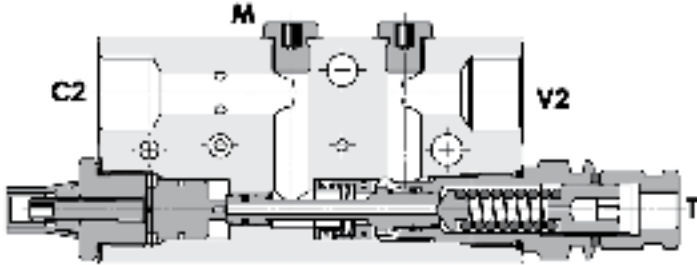




FLUID-PRESS

## FLOW CONTROL VALVES

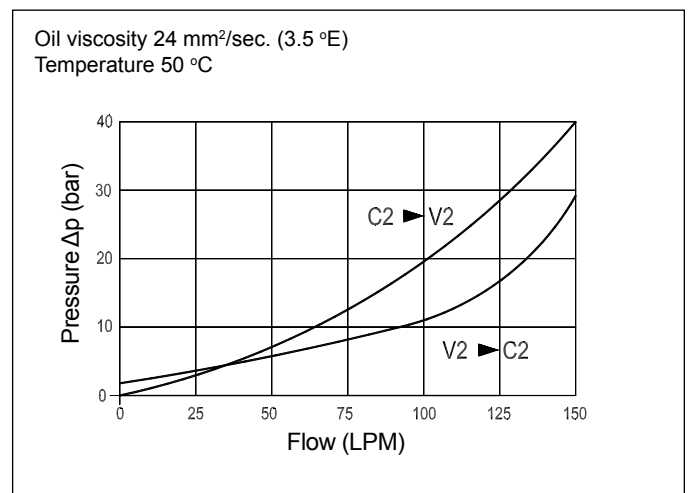
Flow, Check and Metering Valve for Boom Lifts  
FPEXC-150-S-3/4-L-DX-05-50



### Technical Specifications

<b>Materials</b>	Body = steel zinc plated Internal parts = hardened steel
<b>Rated Flow</b>	up to 150 LPM
<b>Adjustment Range</b>	① = 3.5 - 19.5 bar ② = 250-500 bar
<b>Standard Setting</b>	① = 3.5 bar ② = 350 bar
<b>Pressure Inc. Per Turn</b>	① = 7.5 bar ② = 198 bar
<b>Max. Setting</b>	420 bar
<b>Weight</b>	3.600 kg
<b>Port Sizes</b>	C2/V2 = G3/4 PIL/T/M = G1/4
<b>Adjustment Type</b>	Leakproof screw
<b>Oil Temperature Range</b>	-20°C + 80°C
<b>Recommended Filtration</b>	Nominal max. 10µ, ISO 4406-19/17/14 (NAS8) or less
<b>Ambient Temperature Range</b>	-30°C + 60°C

### Pressure Drop Curves



Content is subject to change without notice. Please refer to our website for the most current product information.