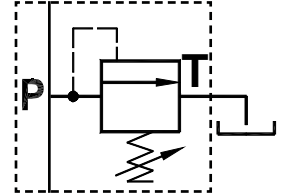
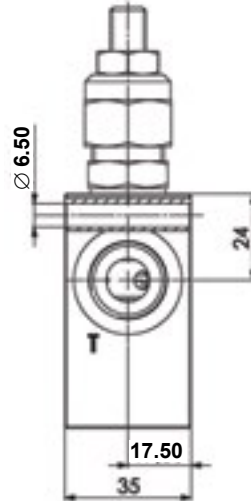
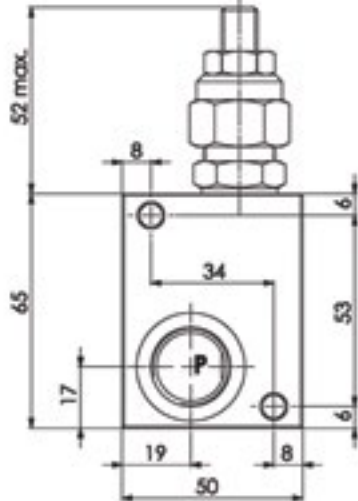
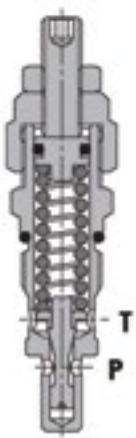




FLUID-PRESS

RELIEF VALVES

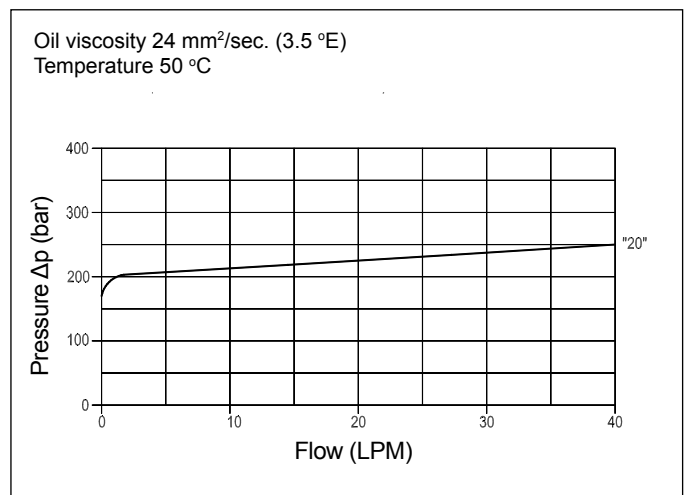
Line Mounted, Direct Acting, Guided Poppet Relief Valve
FPM-D-40-CB-P-1/2-20



Technical Specifications

Materials	Cartridge = steel, zinc plated Internal parts = hardened steel Body = high strength aluminium alloy
Rated Flow	40 LPM
Adjustment Range	50 - 220 bar
Standard Setting	50 bar
Pressure Inc. Per Turn	40 bar
Max. Pressure	220 bar
Cartridge with Body Weight	0.410 kg
Installation Torque	45-50 Nm
Port Sizes	P/T = G1/2
Adjustment Type	Leakproof screw
Oil Temperature Range	-20°C + 80°C
Recommended Filtration	Nominal max. 10µ, ISO 4406-19/17/14 (NAS8) or less
Ambient Temperature Range	-30°C + 60°C

Pressure Drop Curves



Content is subject to change without notice. Please refer to our website for the most current product information.