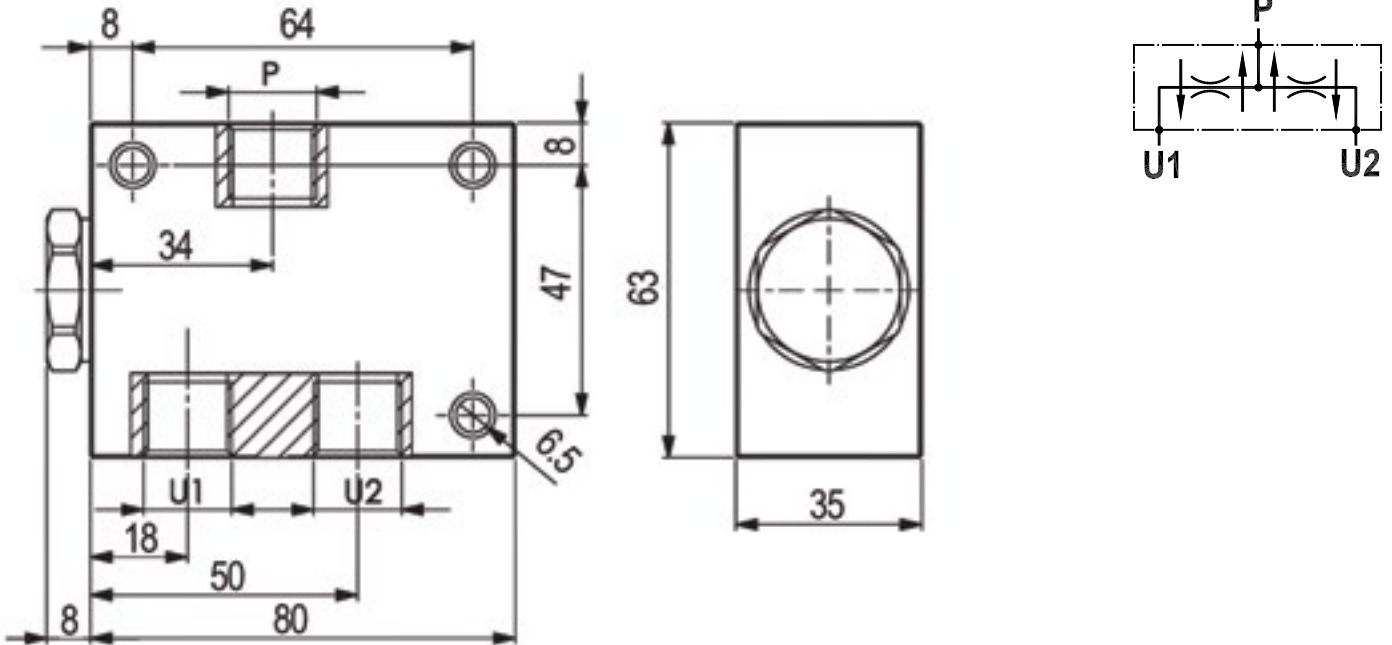




FLOW CONTROL VALVES

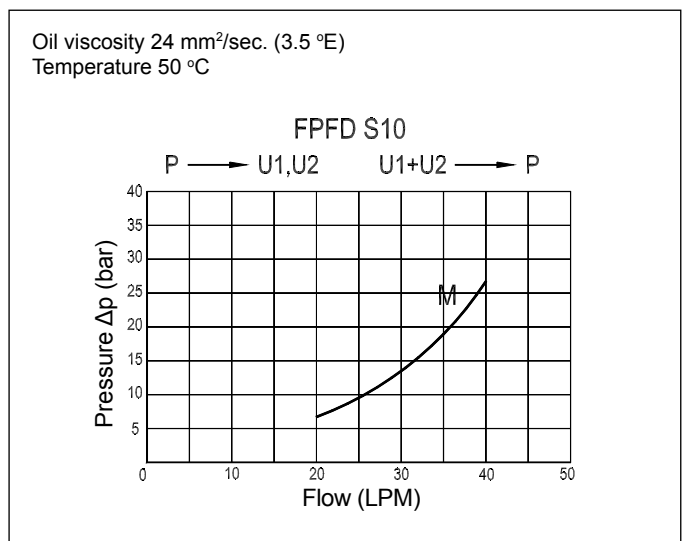
Line Mounted, Flow Divider/Combiner
 PFD-S10-CB-1/2-3/8-M



Technical Specifications

Materials	Cartridge = steel made, zinc plated Internal parts = hardened steel Body = high strength aluminium alloy
Rated Flow	20-40 LPM
Max. Pressure	210 bar
Weight	0.500 kg
Division Percentage	50/50 (accuracy 10% between ports U1-U2 with 120 bar differential pressure)
Port Sizes	P = G1/2 U1/U2 = G3/8
Oil Temperature Range	-20°C + 80°C
Recommended Filtration	Nominal max. 10µ, ISO 4406-19/17/14 (NAS8) or less
Ambient Temperature Range	-30°C + 60°C

Pressure Drop Curves



Content is subject to change without notice. Please refer to our website for the most current product information.