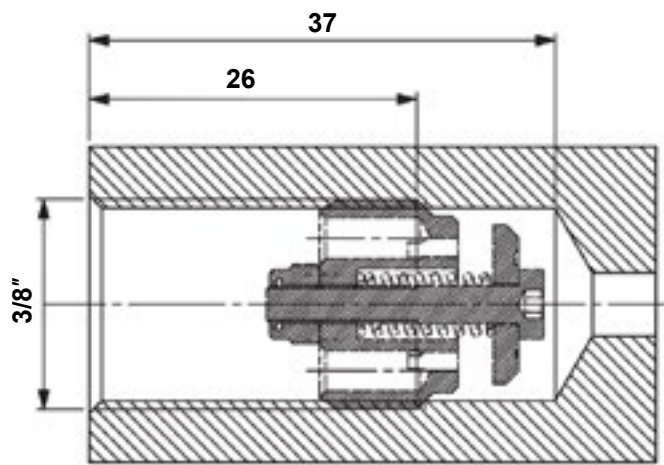
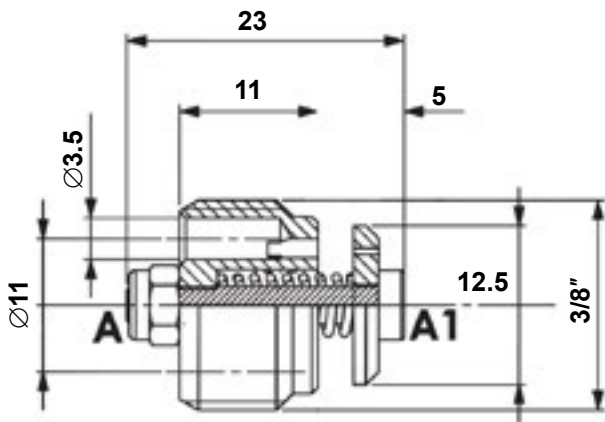
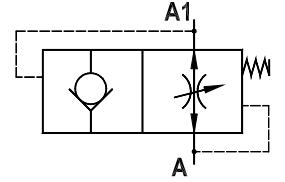
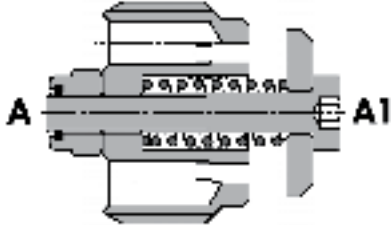




FLOW CONTROL VALVES

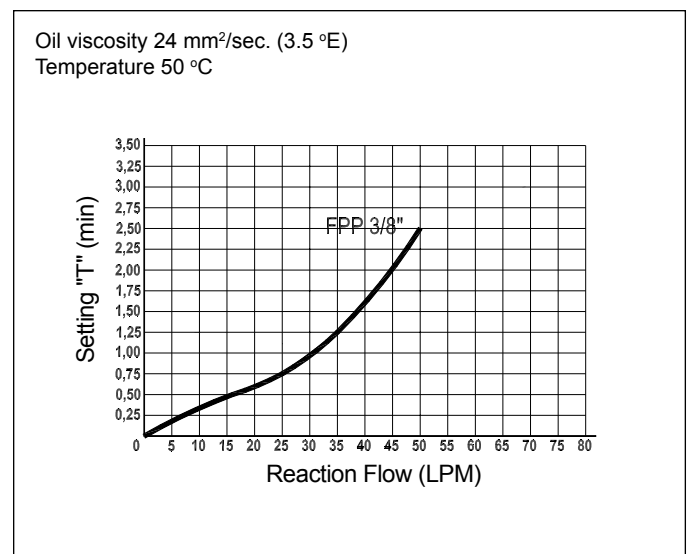
Hose Burst Insert
FPP-3/8



Technical Specifications

| | |
|----------------------------------|--|
| Materials | Steel |
| Flow Range | 16-50 LPM |
| Max Flow | 16-50 LPM |
| Cracking Pressure | 0.5 bar standard |
| Max Pressure | 350 bar |
| Weight | 0.012 kg |
| Installation Torque | 3 Nm |
| Housing | Refer to housing information on page 66 |
| Oil Temperature Range | -20°C + 80°C |
| Recommended Filtration | Nominal max. 10µ, ISO 4406-19/17/14 (NAS8) or less |
| Ambient Temperature Range | -30°C + 60°C |

Compensation Curves



Content is subject to change without notice. Please refer to our website for the most current product information.