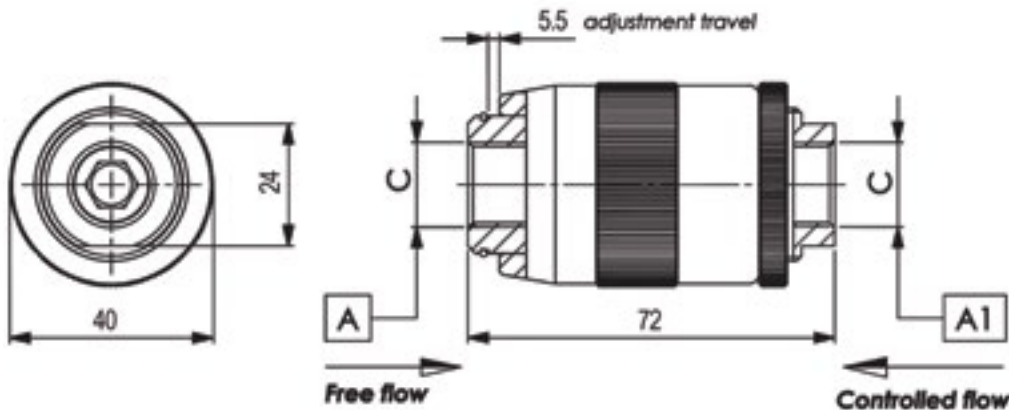
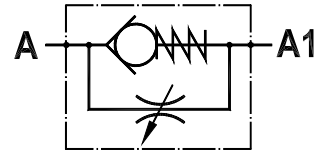
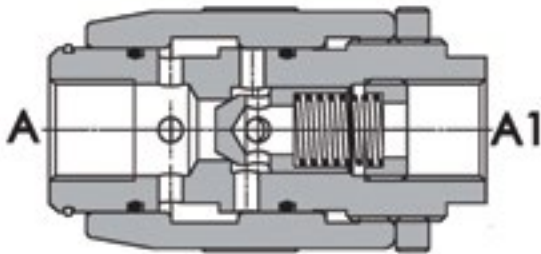




FLUID-PRESS

FLOW CONTROL VALVES

Line Mounted, Barrel Type Flow Restrictor
FPMU-3/8

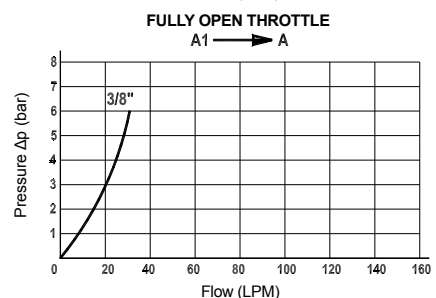
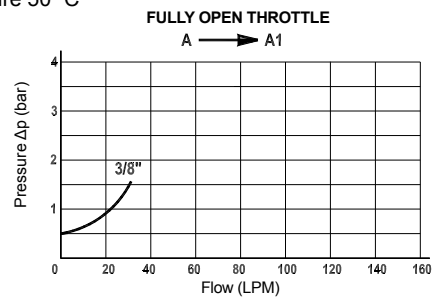


Technical Specifications

Materials	Body = steel zinc plated Internal parts = steel
Rated Flow	30 LPM
Cracking Pressure	0.5 bar
Max. Pressure	350 bar
Weight	0.430 kg
Port Sizes	A/A1 = G3/8
Adjustment Type	Screw
Oil Temperature Range	-20°C + 80°C
Recommended Filtration	Nominal max. 10µ, ISO 4406-19/17/14 (NAS8) or less
Ambient Temperature Range	-30°C + 60°C

Compensation Curves

Oil viscosity 24 mm²/sec. (3.5 °E)
Temperature 50 °C



Content is subject to change without notice. Please refer to our website for the most current product information.