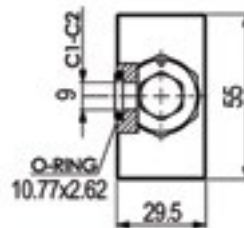
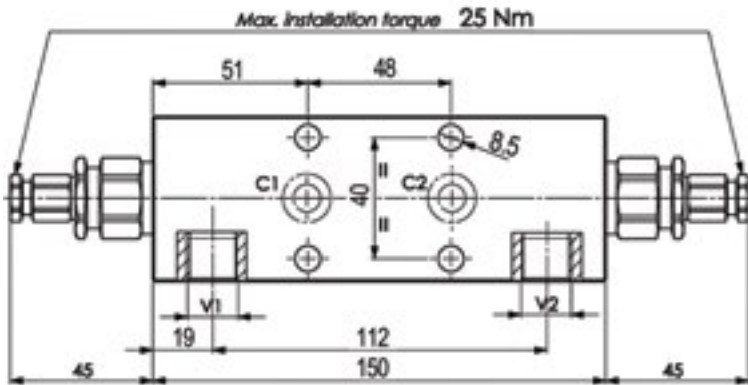
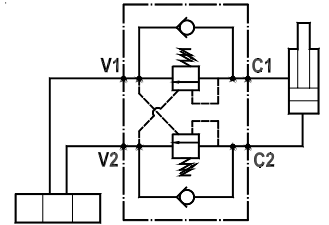
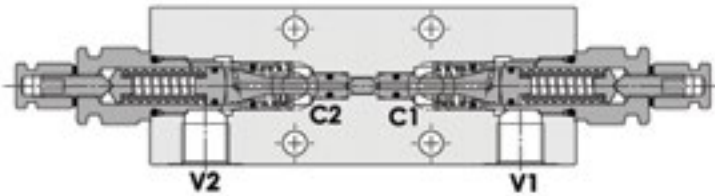




OVER CENTRE VALVES

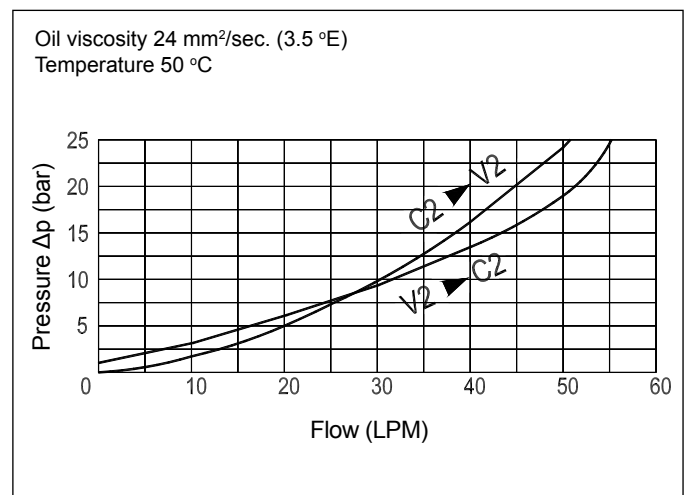
Manifold Mounted, Dual Over Centre Valve
FPO-50-D-3/8-2F-20



Technical Specifications

Materials	Body = steel, zinc plated Internal parts = hardened steel
Rated Flow	up to 50 LPM
Adjustment Range	60-210 bar
Standard Setting	170 bar
Pressure Inc. Per Turn	70 bar
Max. Pressure	350 bar
Weight	1.820 kg
Pilot Ratio	4.25:1
Port Sizes	C1/C2 = 9mm V1/V2 = G3/8
Adjustment Type	Leakproof screw
Oil Temperature Range	-20°C + 80°C
Recommended Filtration	Nominal max. 10µ, ISO 4406-19/17/14 (NAS8) or less
Ambient Temperature Range	-30°C + 60°C

Pressure Drop Curves



Content is subject to change without notice. Please refer to our website for the most current product information.