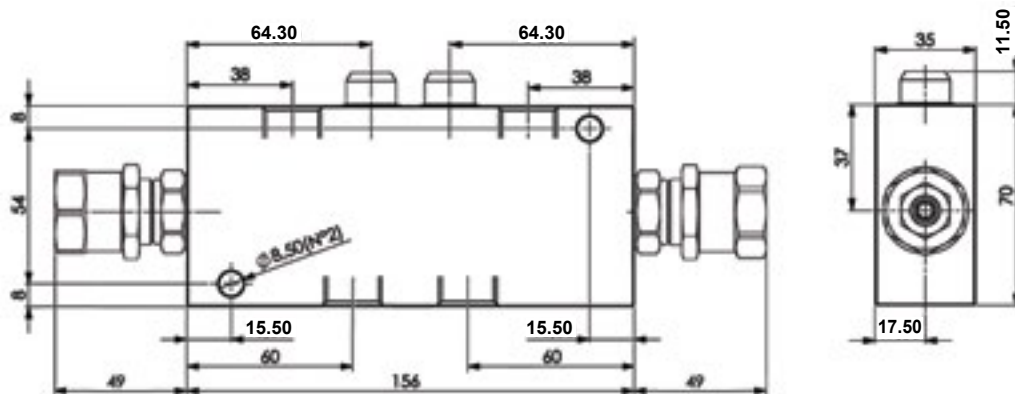
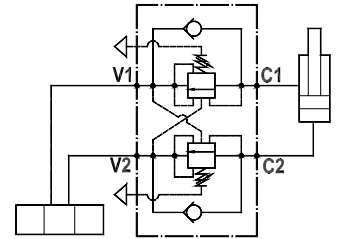
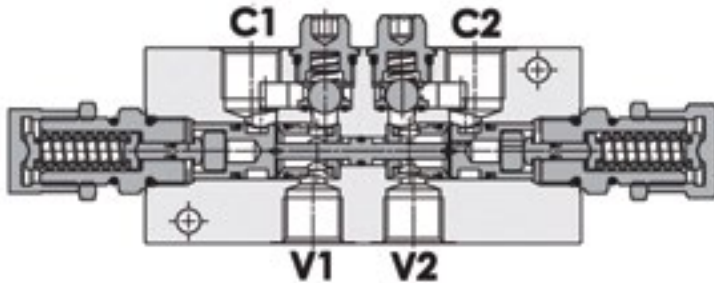




# OVER CENTRE VALVES

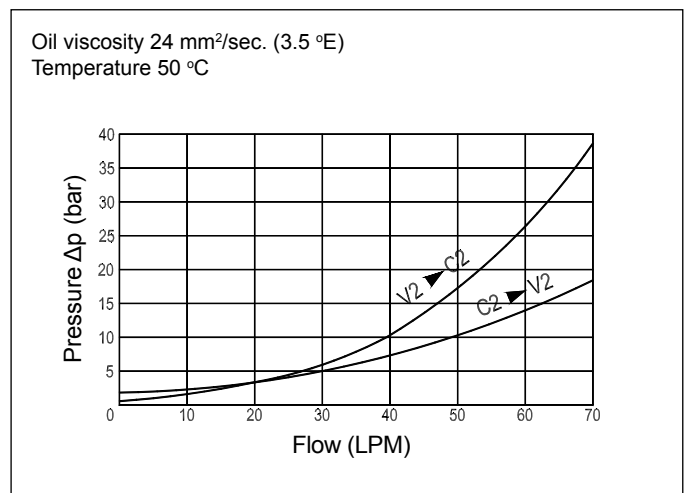
Line Mounted, Partially Balanced Dual Over Centre Valve - E Series  
 FPOEB-70-D-1/2-LA-35  
 FPOEB-70-D-1/2-LA-35-B



## Technical Specifications

<b>Materials</b>	Body = aluminium alloy Internal parts = hardened steel
<b>Rated Flow</b>	up to 70 LPM
<b>Adjustment Range</b>	120-350 bar
<b>Standard Setting</b>	350 bar
<b>Pressure Inc. Per Turn</b>	90 bar
<b>Max. Pressure</b>	210 bar
<b>Weight</b>	1.400 kg
<b>Pilot Ratio</b>	FPOEB-70-D-1/2-LA-35 = 3.2:1 FPOEB-70-D-1/2-LA-35-B = 8.2:1
<b>Port Sizes</b>	C1/C2/V1/V2 = G1/2
<b>Adjustment Type</b>	Leakproof screw
<b>Oil Temperature Range</b>	-20°C + 80°C
<b>Recommended Filtration</b>	Nominal max. 10µ, ISO 4406-19/17/14 (NAS8) or less
<b>Ambient Temperature Range</b>	-30°C + 60°C

## Pressure Drop Curves



Content is subject to change without notice. Please refer to our website for the most current product information.