



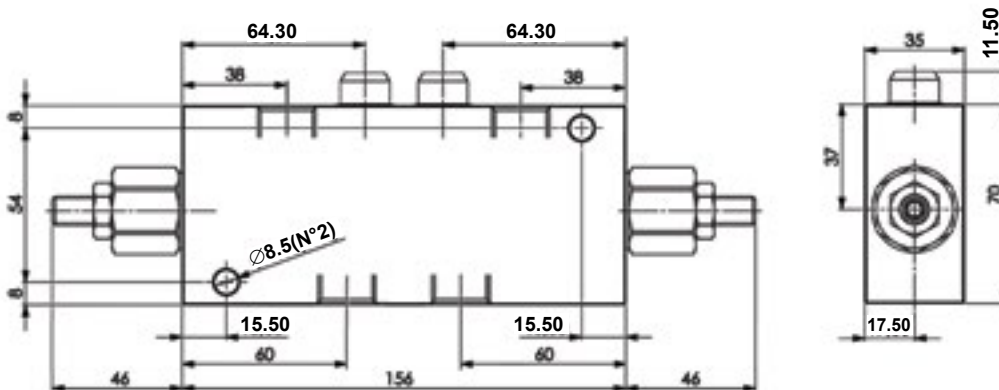
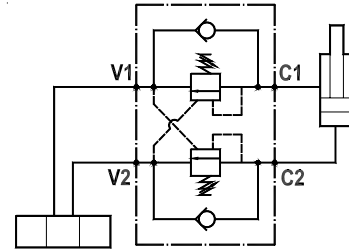
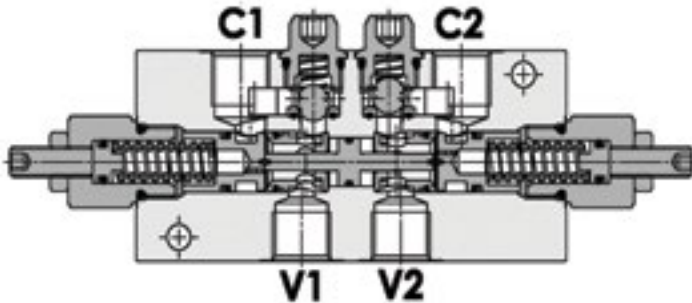
FLUID-PRESS

OVER CENTRE VALVES

Line Mounted, Dual Over Centre Valve - E Series

FPOE-70-D-1/2-LA-20-B

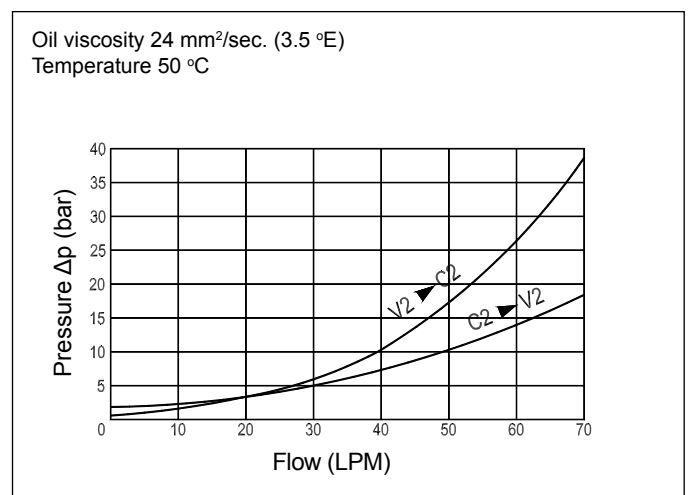
FPOE-70-D-1/2-LA-35-B



Technical Specifications

Materials	Body = aluminium alloy Internal parts = hardened steel
Rated Flow	up to 70 LPM
Adjustment Range	60-210 bar
Standard Setting	200 bar
Pressure Inc. Per Turn	56 bar
Max. Pressure	210 bar
Weight	1.300 kg
Pilot Ratio	8.2:1
Port Sizes	C1/C2/V1/V2 = G1/2
Adjustment Type	Leakproof screw
Oil Temperature Range	-20°C + 80°C
Recommended Filtration	Nominal max. 10µ, ISO 4406-19/17/14 (NAS8) or less
Ambient Temperature Range	-30°C + 60°C

Pressure Drop Curves



Content is subject to change without notice. Please refer to our website for the most current product information.