



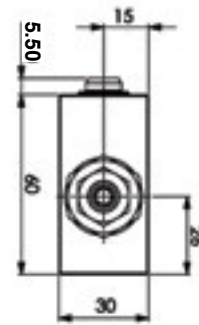
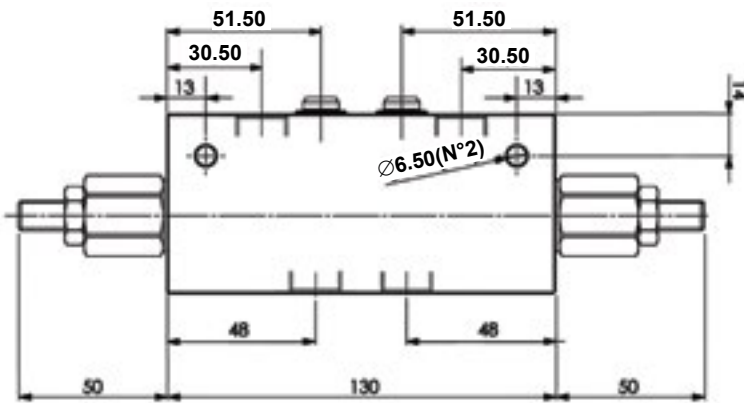
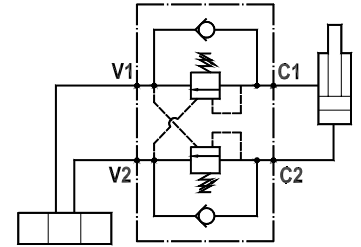
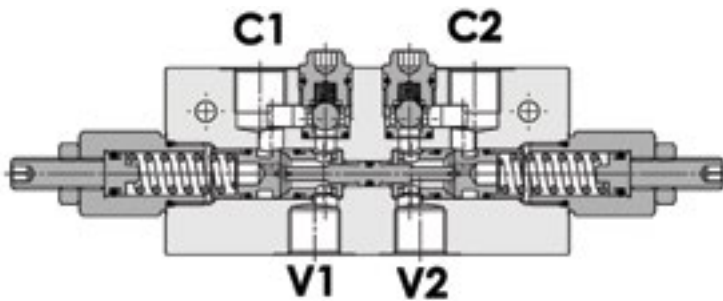
FLUID-PRESS

OVER CENTRE VALVES

Inline Mounted, Dual Over Centre Valves - E Series

FPOE-40-D-3/8-LA-20

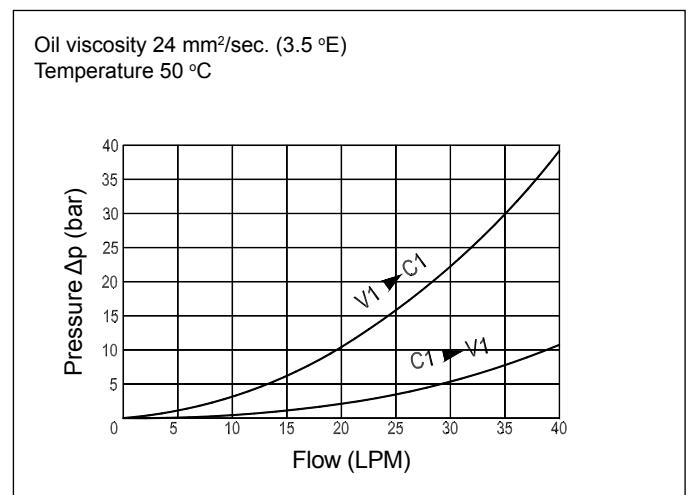
FPOE-40-D-3/8-LA-20-B



Technical Specifications

Materials	Body = aluminium alloy Internal parts = hardened steel
Rated Flow	up to 40 LPM
Adjustment Range	60-210 bar
Standard Setting	200 bar
Pressure Inc. Per Turn	51 bar
Max. Pressure	210 bar
Weight	0.900 kg
Pilot Ratio	FPOE-40-D-3/8-L-A-20 = 2.9:1 FPOE-40-D-3/8-L-A-20-B = 6.6:1
Port Sizes	C1/C2/V1/V2 = G3/8
Adjustment Type	Leakproof screw
Oil Temperature Range	-20°C + 80°C
Recommended Filtration	Nominal max. 10µ, ISO 4406-19/17/14 (NAS8) or less
Ambient Temperature Range	-30°C + 60°C

Pressure Drop Curves



Content is subject to change without notice. Please refer to our website for the most current product information.