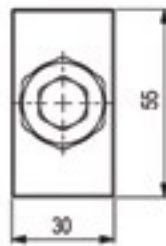
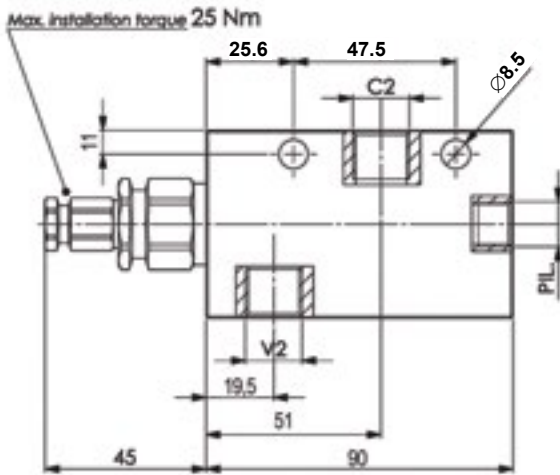
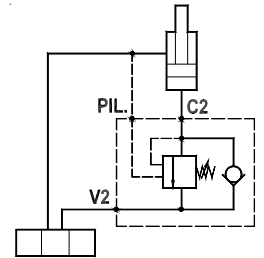
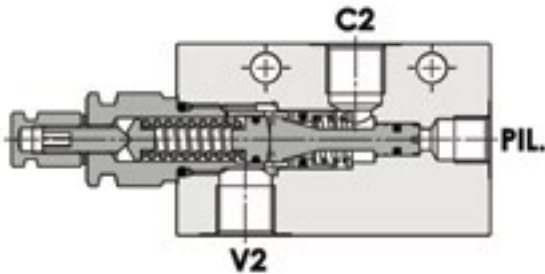




FLUID-PRESS

OVER CENTRE VALVES

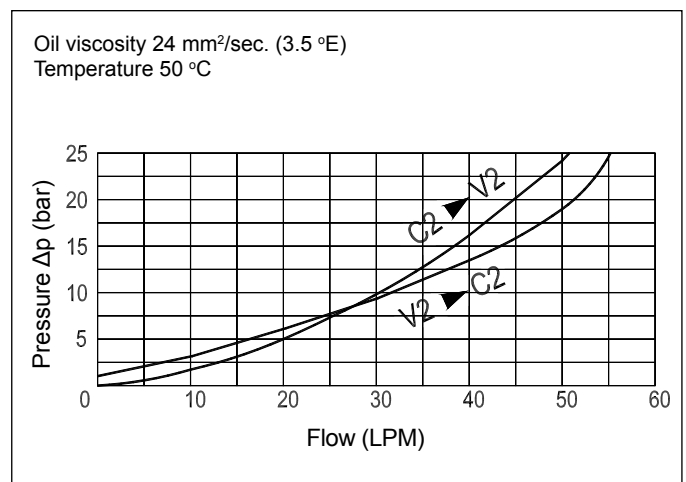
Line Mounted Single Over Centre Valve
FPO-50-S-3/8-L-20



Technical Specifications

Materials	Body = steel, zinc plated Internal parts = hardened steel
Rated Flow	up to 50 LPM
Adjustment Range	60-210 bar
Standard Setting	170 bar
Pressure Inc. Per Turn	70 bar
Max. Pressure	350 bar
Weight	1.020 kg
Pilot Ratio	4.25:1
Port Sizes	C1/C2 = G3/8 PIL = G14
Adjustment Type	Leakproof screw
Oil Temperature Range	-20°C + 80°C
Recommended Filtration	Nominal max. 10µ, ISO 4406-19/17/14 (NAS8) or less
Ambient Temperature Range	-30°C + 60°C

Pressure Drop Curves



Content is subject to change without notice. Please refer to our website for the most current product information.