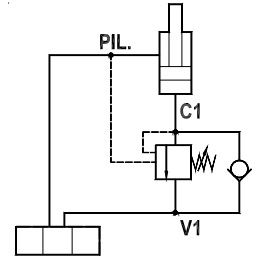
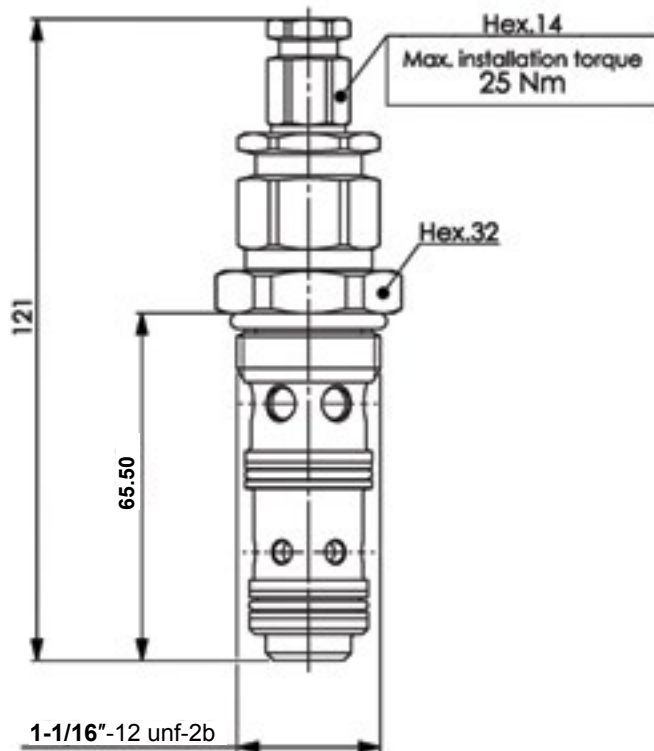
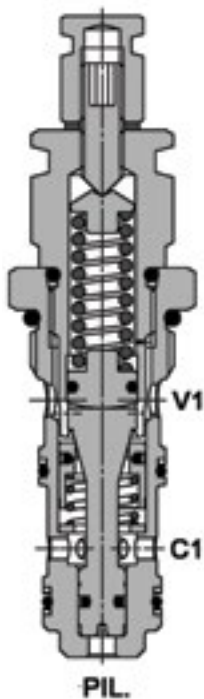




FLUID-PRESS

OVER CENTRE VALVES

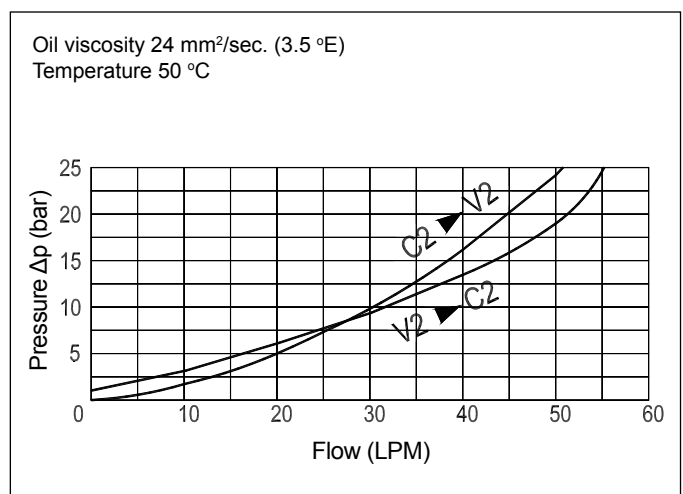
Over Centre Valve, Cartridge Version
FPO-50-C-35



Technical Specifications

| | |
|----------------------------------|--|
| Materials | Body = steel, zinc plated Internal parts = hardened steel |
| Rated Flow | up to 50 LPM |
| Adjustment Range | 80-350 bar |
| Standard Setting | 280 bar |
| Pressure Inc. Per Turn | 120 bar |
| Max. Pressure | 350 bar |
| Weight | 0.290 kg |
| Installation Torque | 90-100 Nm |
| Pilot Ratio | 4.25:1 |
| Cavity | 33123, refer to cavity information on page 65 |
| Adjustment Type | Leakproof screw |
| Oil Temperature Range | -20°C + 80°C |
| Recommended Filtration | Nominal max. 10µ, ISO 4406-19/17/14 (NAS8) or less |
| Ambient Temperature Range | -30°C + 60°C |

Pressure Drop Curves



Content is subject to change without notice. Please refer to our website for the most current product information.