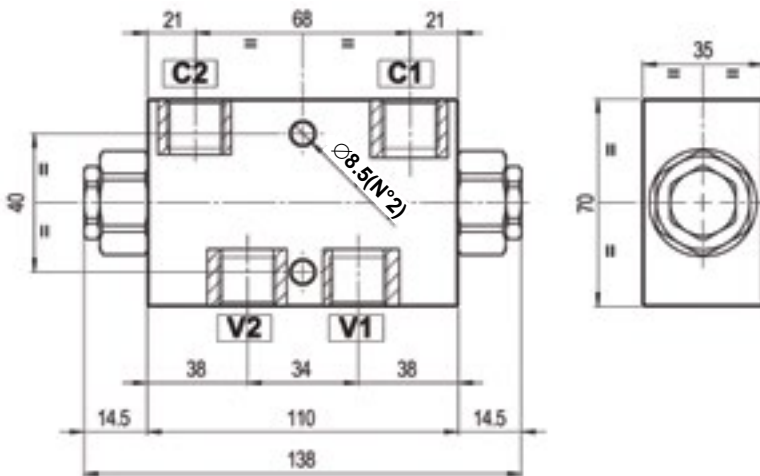
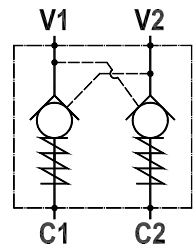
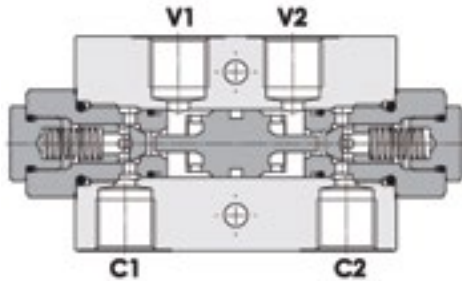




# CHECK VALVES

Line Mounted, Double Pilot Operated Check Valve  
 FPD-L-1/2  
 FPD-L-1/2-5

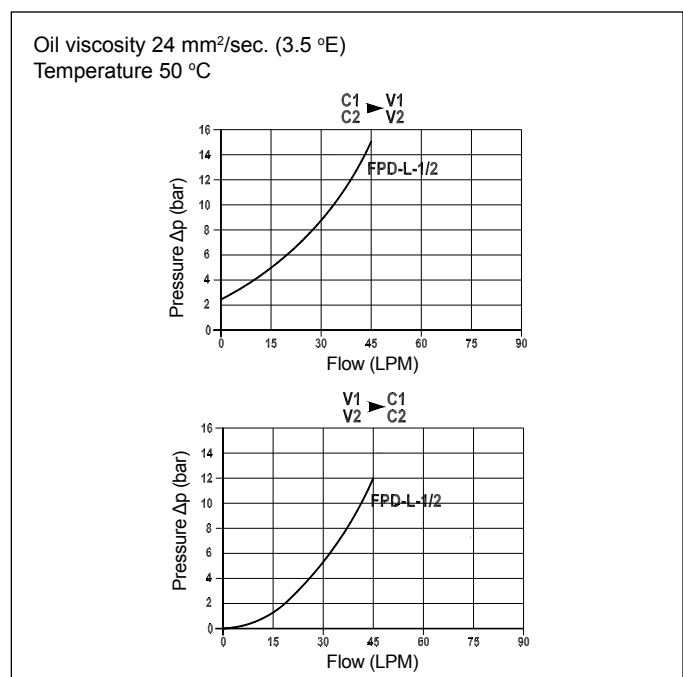


## Technical Specifications

<b>Materials</b>	Body = aluminium Internal parts = hardened and ground steel
<b>Rated Flow</b>	45 LPM
<b>Cracking Pressure</b>	FPDL-1/2 = 2.5 bar FPDL-1/2-5 = 5 bar
<b>Max. Pressure</b>	210 bar
<b>Weight</b>	0.750 kg
<b>Pilot Ratio</b>	3.5:1
<b>Port Sizes</b>	C1/C2/V1/V2 = G1/2
<b>Oil Temperature Range</b>	-20°C + 80°C
<b>Recommended Filtration</b>	Nominal max. 10µ, ISO 4406-19/17/14 (NAS8) or less
<b>Ambient Temperature Range</b>	-30°C + 60°C

Note: These valves cannot allow for a high discharge counter pressure due to their configuration.

## Pressure Drop Curves



Content is subject to change without notice. Please refer to our website for the most current product information.