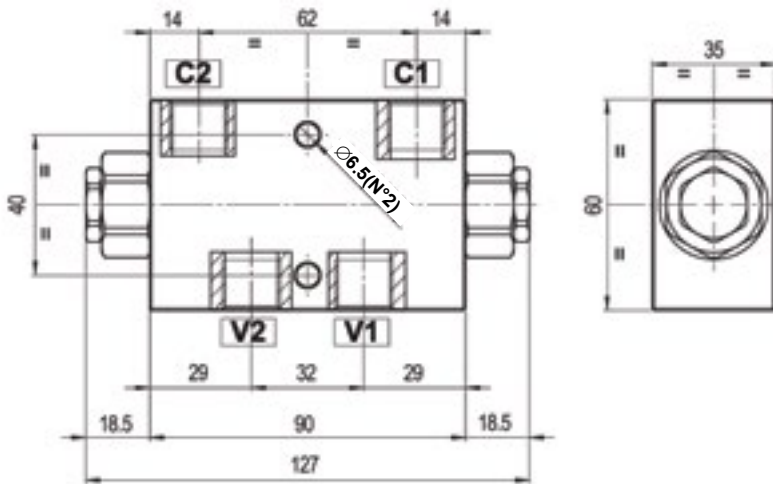
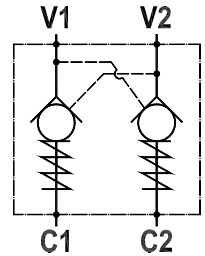
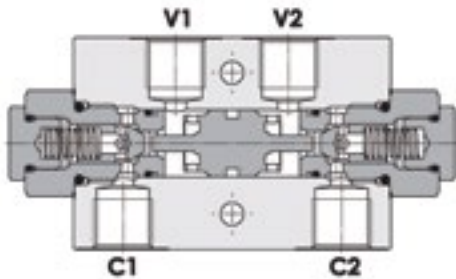




FLUID-PRESS

CHECK VALVES

Line Mounted, Double Pilot Operated Check Valve
FPD-L-3/8



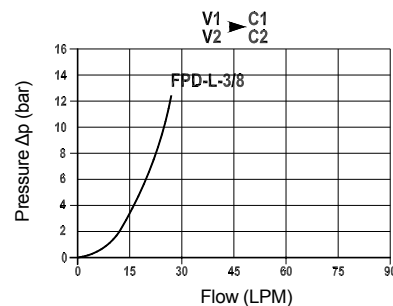
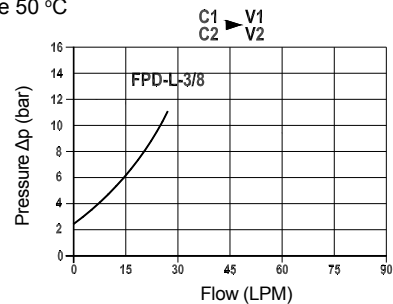
Technical Specifications

Materials	Body = aluminium Internal parts = hardened and ground steel
Rated Flow	25 LPM
Cracking Pressure	2.5 bar
Max. Pressure	210 bar
Weight	0.650 kg
Pilot Ratio	1:7
Port Sizes	C1/C2/V1/V2 = G3/8
Oil Temperature Range	-20°C + 80°C
Recommended Filtration	Nominal max. 10µ, ISO 4406-19/17/14 (NAS8) or less
Ambient Temperature Range	-30°C + 60°C

Note: These valves cannot allow for a high discharge counter pressure due to their configuration.

Pressure Drop Curves

Oil viscosity 24 mm²/sec. (3.5 °E)
Temperature 50 °C



Content is subject to change without notice. Please refer to our website for the most current product information.