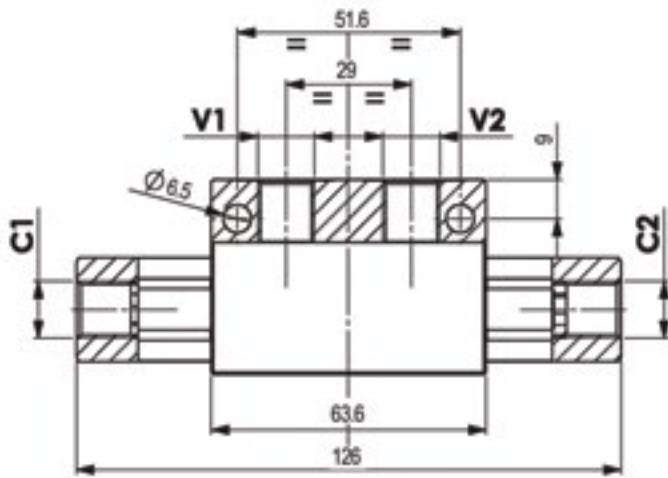
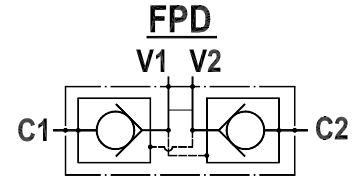
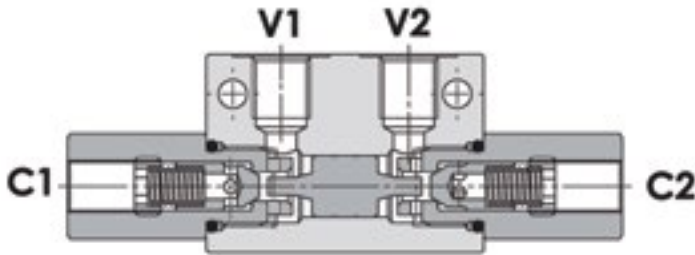




FLUID-PRESS

# CHECK VALVES

Line Mounted, Double Pilot Operated Check Valve  
FPD-1/4



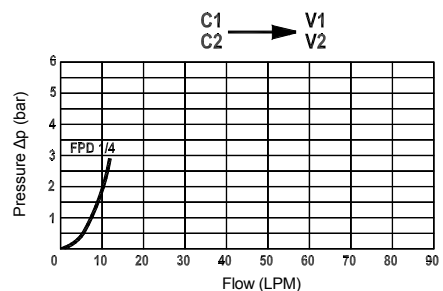
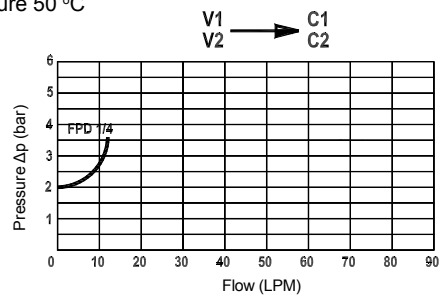
## Technical Specifications

<b>Materials</b>	Body = steel, zinc plated Internal parts = hardened and ground steel
<b>Rated Flow</b>	12 LPM
<b>Cracking Pressure</b>	2 bar
<b>Max. Pressure</b>	350 bar
<b>Weight</b>	0.650 kg
<b>Pilot Ratio</b>	4:1
<b>Port Sizes</b>	C1/C2/V1/V2 = G1/4
<b>Oil Temperature Range</b>	-20°C + 80°C
<b>Recommended Filtration</b>	Nominal max. 10µ, ISO 4406-19/17/14 (NAS8) or less
<b>Ambient Temperature Range</b>	-30°C + 60°C

Note: In order to obtain zero leakage we recommend that directional control valve ports be connected to the tank in order to avoid back-pressure that would make it impossible for the poppet to provide a perfect seal.

## Pressure Drop Curves

Oil viscosity 24 mm<sup>2</sup>/sec. (3.5 °E)  
Temperature 50 °C



Content is subject to change without notice. Please refer to our website for the most current product information.