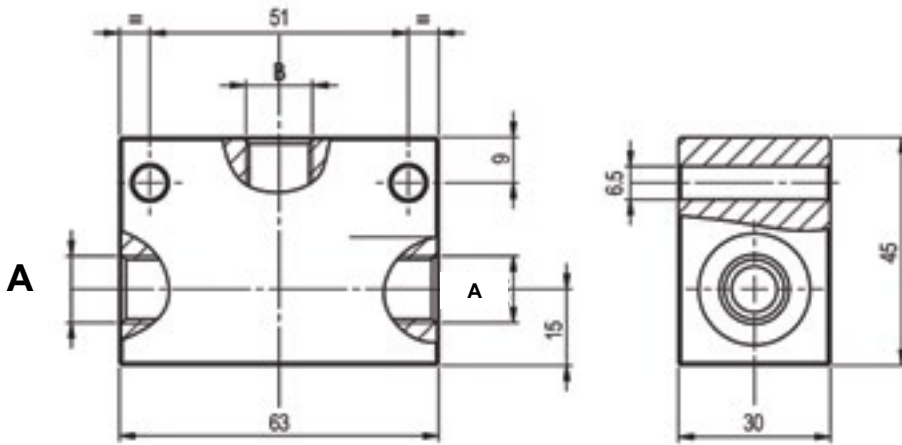
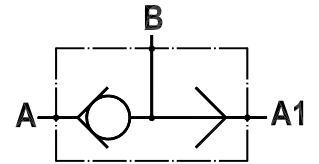
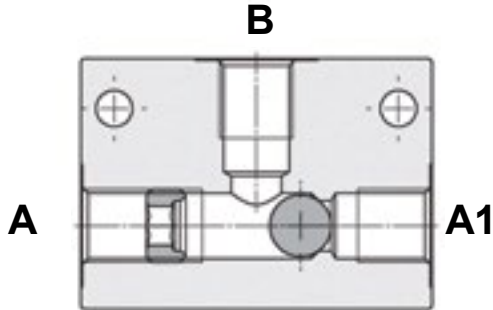




CHECK VALVES

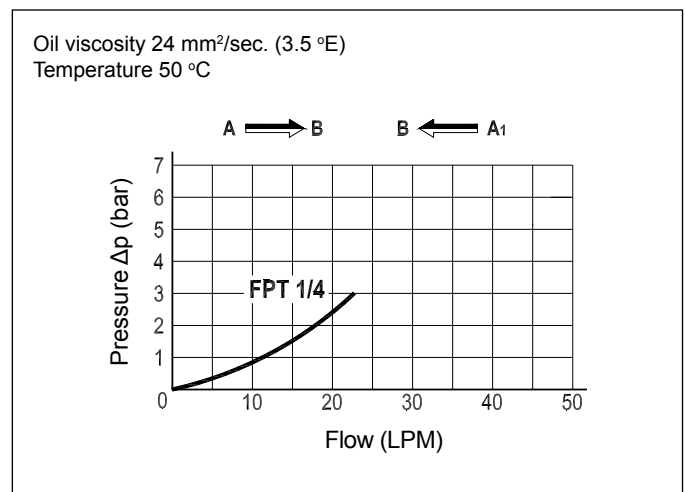
Line Mounted Shuttle Valve
FPT-1/4



Technical Specifications

Materials	Body = steel zinc plated Ball = hardened steel
Rated Flow	25 LPM
Max. Pressure	350 bar
Weight	0.570 kg
Port Sizes	A/A1/B = G1/4
Oil Temperature Range	-20°C + 80°C
Recommended Filtration	Nominal max. 10µ, ISO 4406-19/17/14 (NAS8) or less
Ambient Temperature Range	-30°C + 60°C

Pressure Drop Curves



Content is subject to change without notice. Please refer to our website for the most current product information.