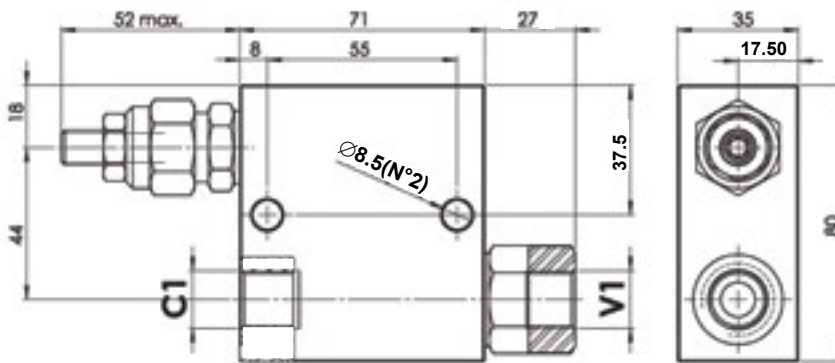
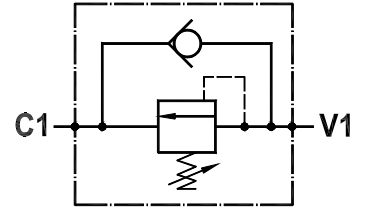
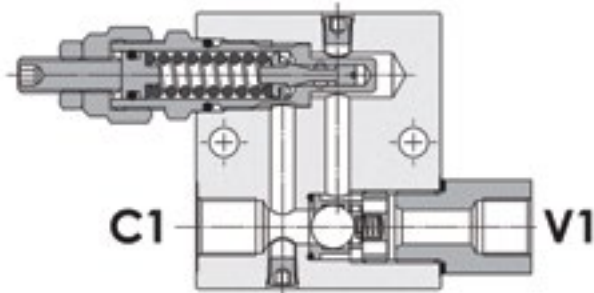




FLUID-PRESS

SEQUENCE VALVES

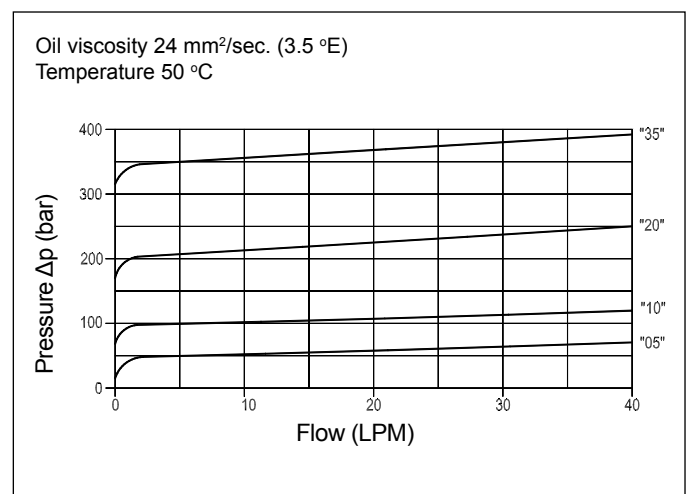
Line Mounted Direct Acting Sequence Valve
FPSQ-D-30-CB-P-3/8-20



Technical Specifications

Materials	Cartridge = steel, zinc plated Internal parts = hardened steel Body = high strength alloy
Rated Flow	40 LPM
Adjustment Range	50-200 bar
Standard Setting	50 bar
Pressure Inc. Per Turn	40 bar
Max. Setting	220 bar
Max. Pressure	210 bar
Weight	0.735 kg
Port Sizes	C1/V1 = G3/8
Adjustment Type	Leakproof screw
Oil Temperature Range	-20°C + 80°C
Recommended Filtration	Nominal max. 10µ, ISO 4406-19/17/14 (NAS8) or less
Ambient Temperature Range	-30°C + 60°C

Pressure Drop Curves



Content is subject to change without notice. Please refer to our website for the most current product information.