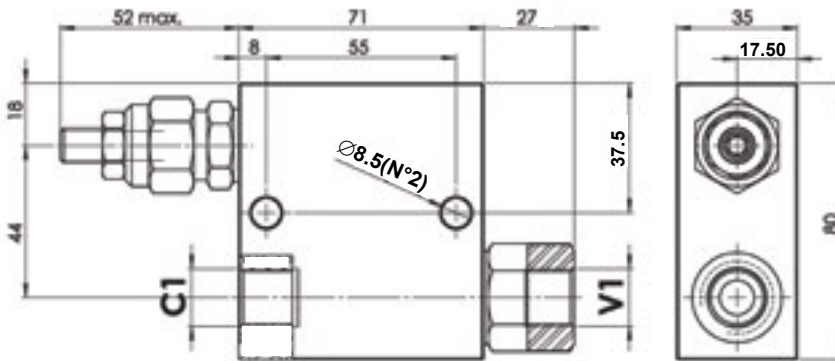
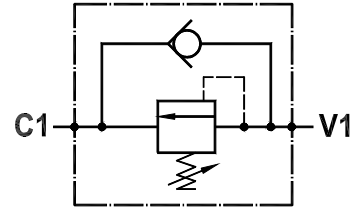
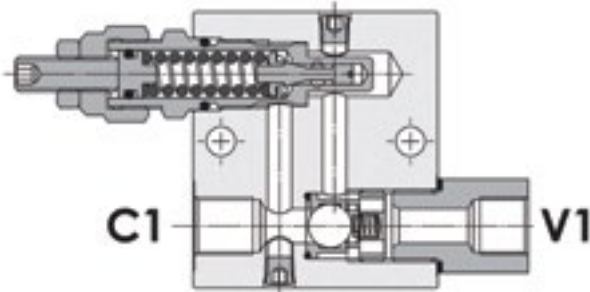




SEQUENCE VALVES

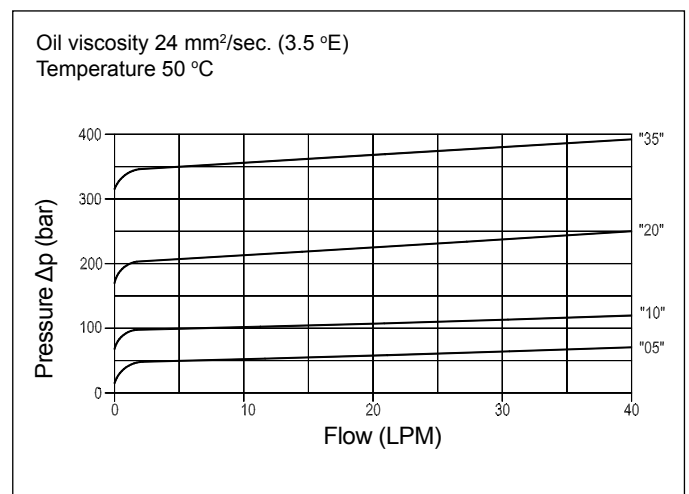
Line Mounted Direct Acting Sequence Valve
FPSQ-D-30-CB-P-3/8-10



Technical Specifications

| | |
|----------------------------------|---|
| Materials | Cartridge = steel, zinc plated Internal parts = hardened steel Body = high strength alloy |
| Rated Flow | 40 LPM |
| Adjustment Range | 30-100 bar |
| Standard Setting | 30 bar |
| Pressure Inc. Per Turn | 20 bar |
| Max. Setting | 100 bar |
| Max. Pressure | 210 bar |
| Weight | 0.735 kg |
| Port Sizes | C1/V1 = G3/8 |
| Adjustment Type | Leakproof screw |
| Oil Temperature Range | -20°C + 80°C |
| Recommended Filtration | Nominal max. 10µ, ISO 4406-19/17/14 (NAS8) or less |
| Ambient Temperature Range | -30°C + 60°C |

Pressure Drop Curves



Content is subject to change without notice. Please refer to our website for the most current product information.