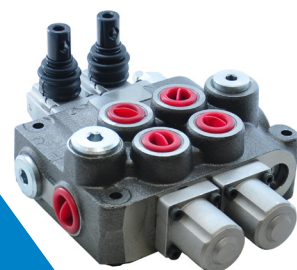




TW **HYDRAULIC**
Warehouse
MONOBLOCK VALVES CATALOGUE





The Hydraulic Warehouse – Australian Distributor of Quality Hydraulic Brands

The Hydraulic Warehouse is Australia's leading distributor of quality hydraulic brands. Based in Sydney Australia, our stores house over 16,000 products from the world's leading manufacturers.

Our mission is to provide our nationwide network of hydraulic resellers with exceptional quality products at market competitive prices; and to back this up with first-rate product support, outstanding stock availability, and the fastest turnaround time from order placement to delivery.

We stock a broad spectrum of premier brands with which we have long-standing relationships. Respected manufacturers such as Eaton, Vickers, Fairfield, Oil Control, Hydraforce, SAI and MP Filtri look to us to keep their brands prominent in the Australian Marketplace.

The Hydraulic Warehouse recognises the importance that our customers place on service, price and quality. These are our values and this is what you can expect from Australia's premier hydraulic distributor:

- ✓ Quality brands
- ✓ First rate product support
- ✓ Extensive stockholding
- ✓ Competitive prices
- ✓ Rapid order turnaround



We are proud distributors of:



**Ask us about sourcing other brands or special products for your next job.
Call 1300 734 351 or email info@thwsales.com.au.**



Monoblock Valves Index

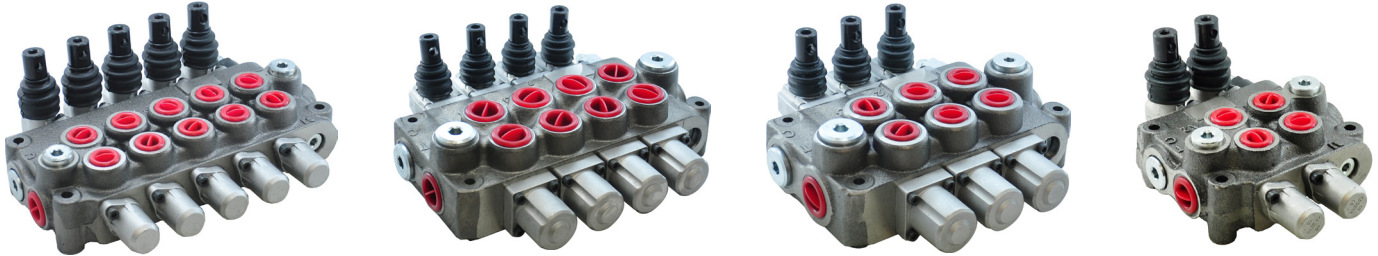
Contents	Page
Technical Information	2
Ordering Guide	3
GM08 Monoblock Valves 45 LPM 	4
Product Specifications	4
Performance Data	5
Spare Parts	6
GM10 Monoblock Valves 90 LPM 	8
Product Specifications	8
Performance Data	9
Spare Parts	10
Quote Request Form	12

Content is subject to change without notice. Please refer to the website for the most current product information.



TECHNICAL INFORMATION

Monoblock Valves



The Hydraulic Warehouse offers a range of GM monoblock valves that are available in two sizes (45 and 90 LPM).

Available in a parallel circuit, the GM08 and GM10 directional control valves have a robust and functional design to suit the mobile market.

A range of control functions are readily available to suit many applications, and special builds can be supplied on request.

Technical Data

	GM08	GM10
Number of Spools	1-6	1-6
Spool Diameter	16mm	20mm
Nominal Flow	45 LPM	90 LPM
Maximum Pressure on P, A & B Ports. Bar (psi)	350 (5075)	350 (5075)
Maximum Pressure on T Port. Bar (psi)	50 (725)	50 (725)
Inlet Relief Valve Adjustment Range. Bar (psi)	10-300 (145 - 4350)	10-300 (145 - 4350)

Operating Conditions

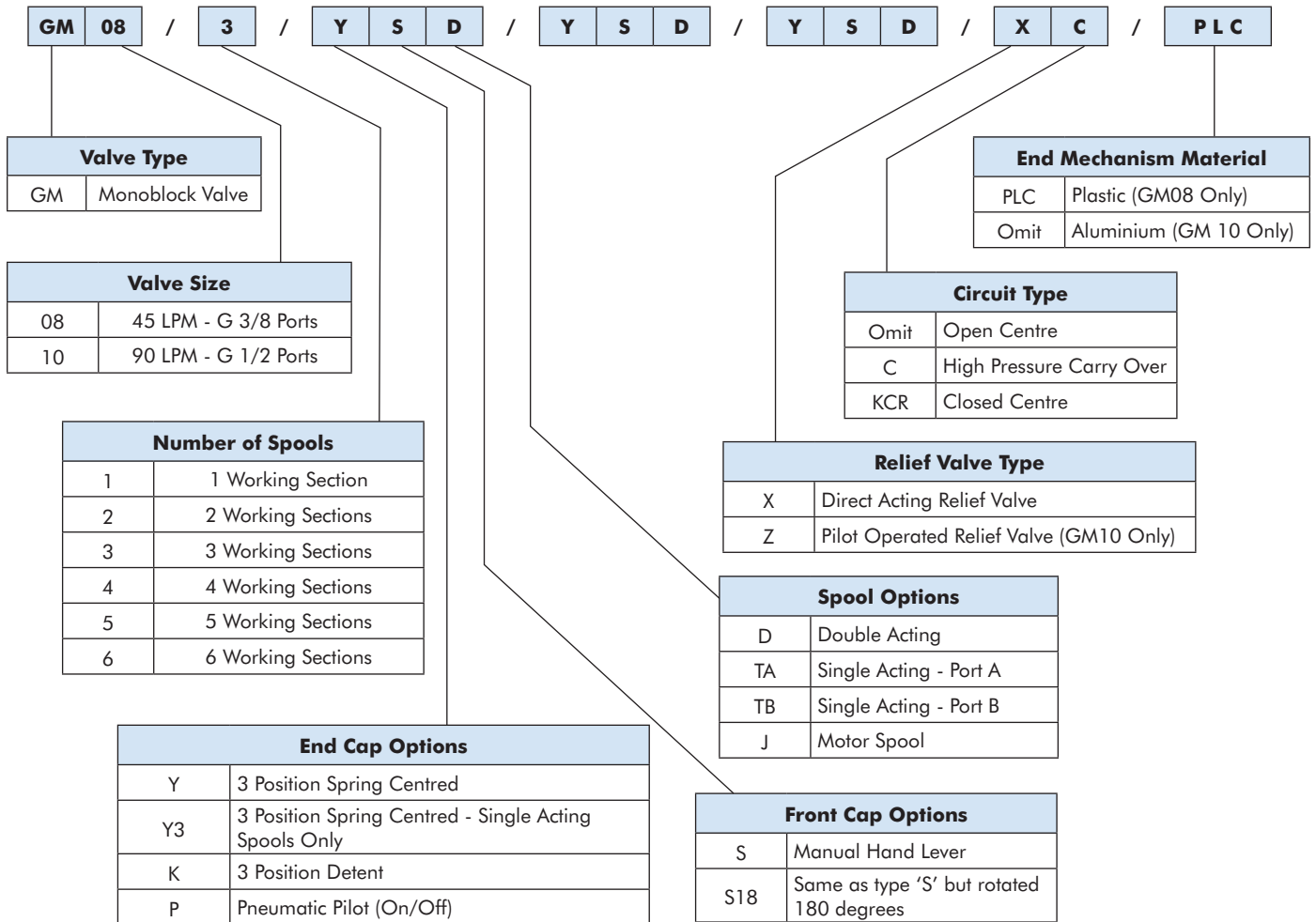
Hydraulic Fluid	Mineral Oil to DIN 51524
Viscosity Range	12-400 cSt
Fluid Temperature Range	-20°C to 80°C
Maximum Contamination Level	ISO 4406 - Class 19/16
	NAS 1638 - Class 10
Ambient Temperature Range	-40°C to 60°C

Content is subject to change without notice. Please refer to the website for the most current product information.

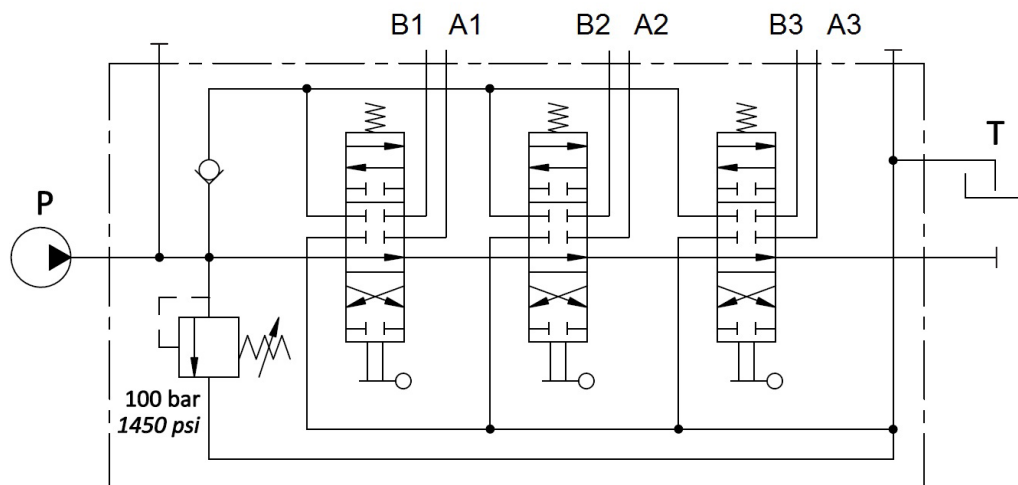


ORDERING GUIDE - BUILD CODE

Typical Example



Typical Circuit Example



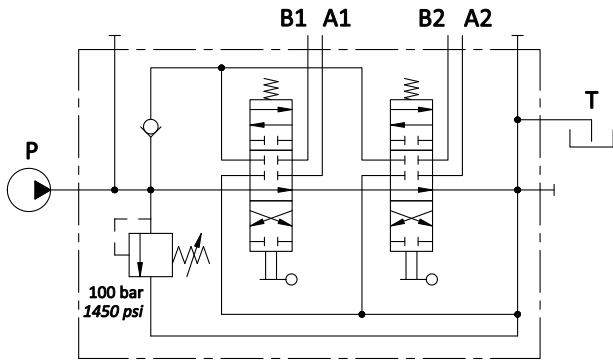
Content is subject to change without notice. Please refer to the website for the most current product information.



GM08 MONOBLOCK VALVES - 45 LPM

Product Specifications

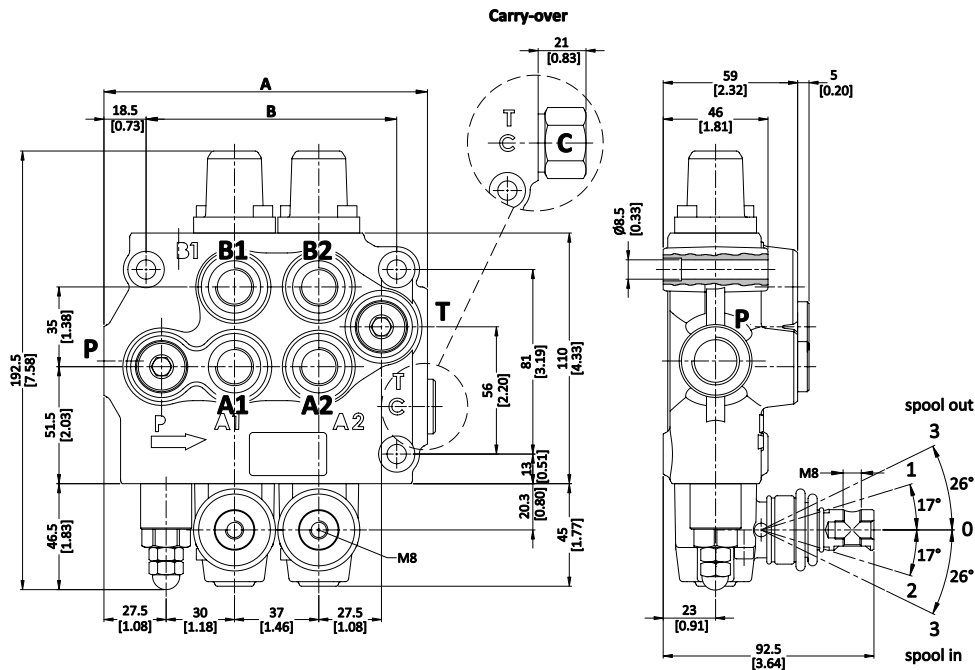
Standard Configuration



Description Example
GM08/2/YSD-YSD-X



Dimensional Data (Parallel Circuit)



Part Number	Build Code	Weight (kg)	A (mm)	B (mm)
GM08/1/YSD-X-PLC	GM08/1/YSD-X-PLC	3.1	73	104
GM08/2/YSD-X-PLC	GM08/2/YSD-YSD-X-PLC	4.4	110	141
GM08/3/YSD-X-PLC	GM08/3/YSD-YSD-YSD-X-PLC	5.7	147	178
GM08/4/YSD-X-PLC	GM08/4/YSD-YSD-YSD-YSD-X-PLC	7.2	184	215
GM08/5/YSD-X-PLC	GM08/5/YSD-YSD-YSD-YSD-YSD-X-PLC	8.7	221	252
GM08/6/YSD-X-PLC	GM08/6/YSD-YSD-YSD-YSD-YSD-YSD-X-PLC	10.2	258	289

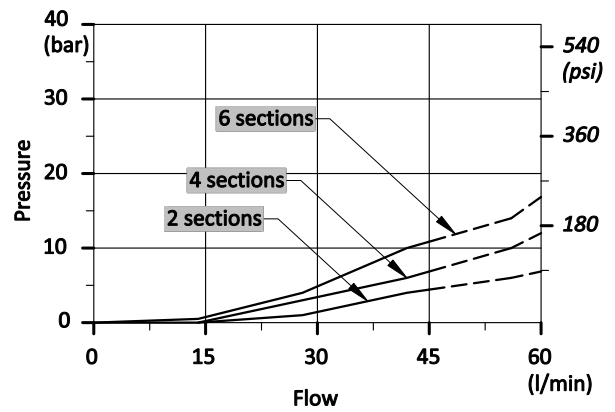
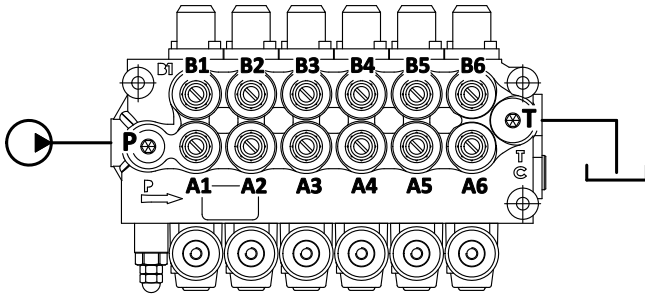
Content is subject to change without notice. Please refer to the website for the most current product information.



Performance Data - Pressure Drop vs. Flow

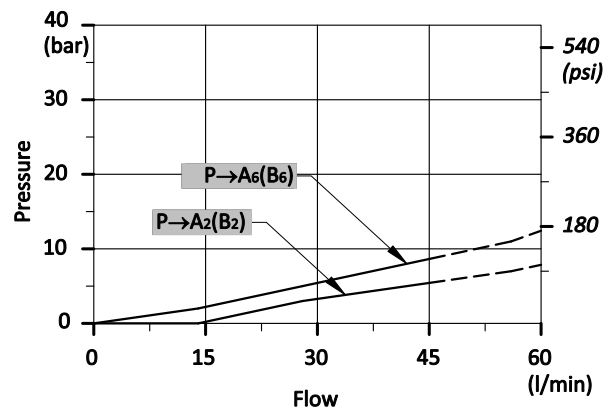
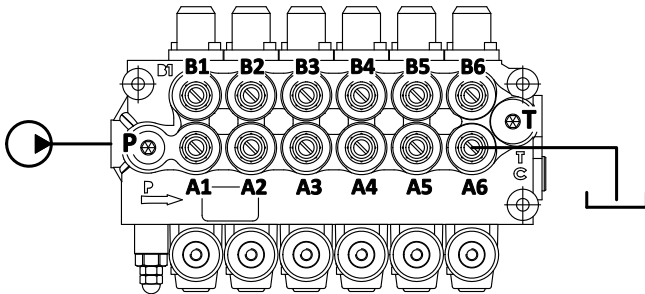
Open Centre

From side inlet to side outlet



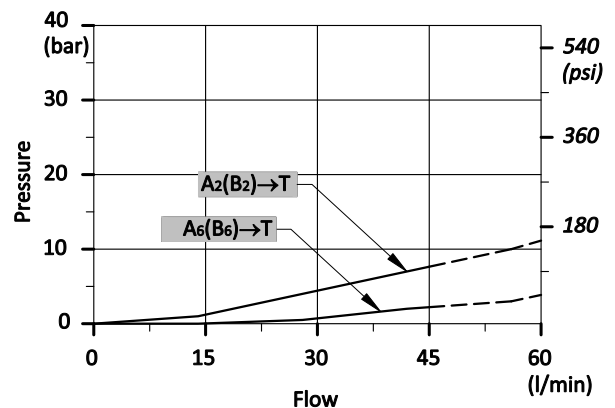
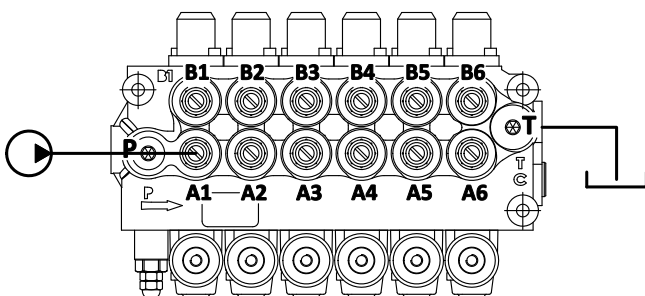
Inlet to Work Port

From side inlet to B port (spool in position 1) or A port (spool in position 2)



Work Port to Outlet

From B port (spool in position 2) or A port (spool in position 1) to side outlet



Content is subject to change without notice. Please refer to the website for the most current product information.



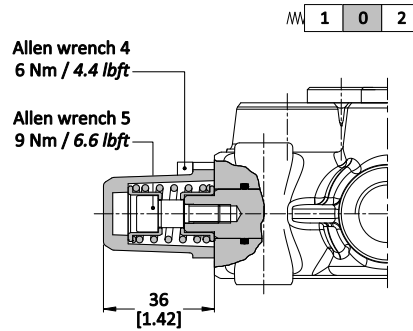
GM08 MONOBLOCK VALVES - 45 LPM

Spare Parts

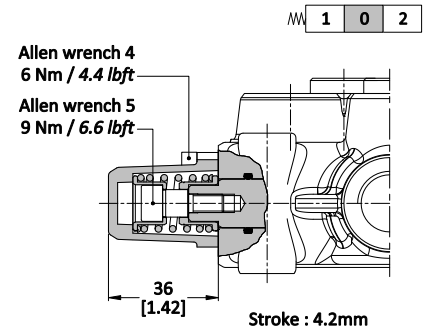
End Cap Options

Part Number	Description	Code
YBM I0073-PLC	Plastic End Cap Only	-
M6x6mm Kit	End Cap Spring Centre Kit	Y
SM6x6mm Kit	End Cap Spring Centre Kit for Single Acting Spools (TA & TB)	Y3
K08/K-PLC	3 Position Detent Kit	K
PNOKONT-08	Pneumatic On/Off Kit	P

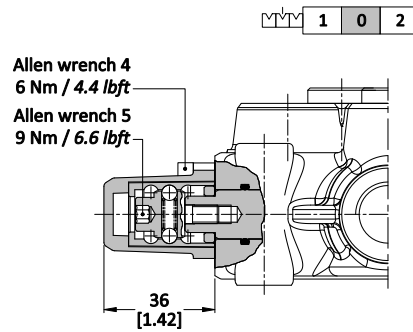
Y KIT (STANDARD)



Y3 KIT

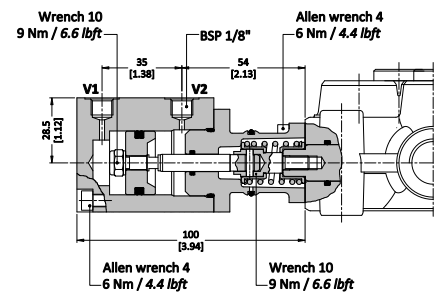


K KIT



P KIT ON/OFF PNEUMATIC CONTROL

With spring return to neutral position.



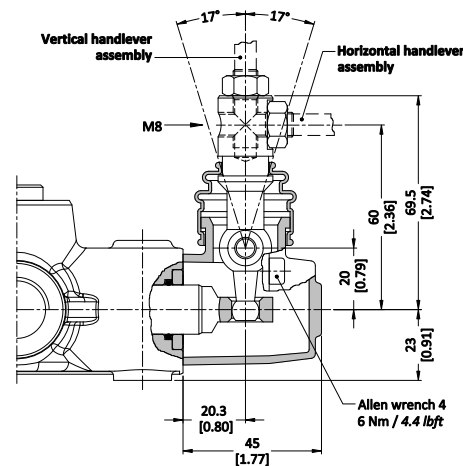
Operating features
Pilot pressure.....: min. 5.5 bar / 80 psi
: max. 10 bar / 145 psi

Front Cap Options

Part Number	Description	Code
KK07x195-PLC	Hand Lever Assembly (Plastic Construction)	S (S18)

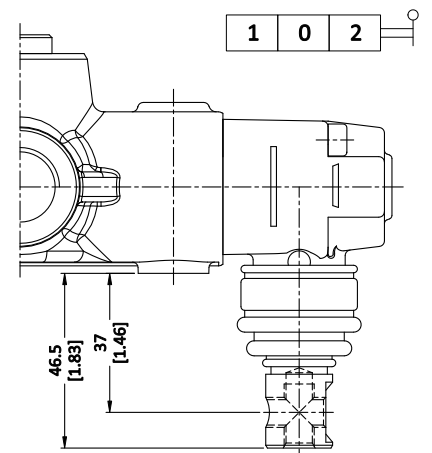
TYPE S (STANDARD)

Plastic with protection boot lever pivot, it can be rotated 180 degrees (for Type S18)



TYPE S18

Execution S18



Content is subject to change without notice. Please refer to the website for the most current product information.

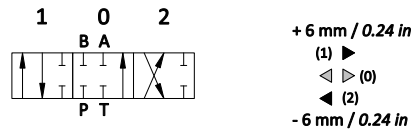


Spare Parts (Cont.)

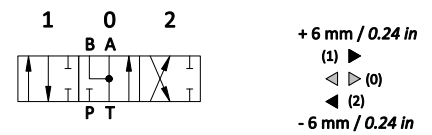
Spool Options

Part Number	Description	Code
UBM 058	Double Acting Spool	D
UBM 058/J	Motor Spool	J
UBM 058/TA	Single Acting Spool - Port A	TA
UBM 058/TB	Single Acting Spool - Port B	TB

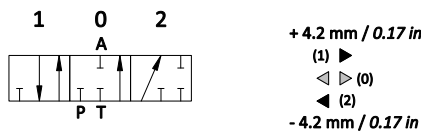
TYPE D (STANDARD)



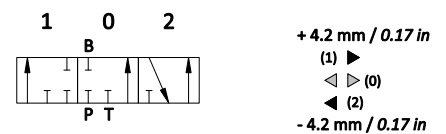
TYPE J



TYPE TA



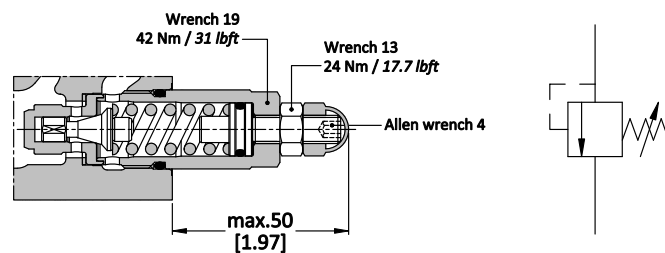
TYPE TB



Relief Valve Options

Part Number	Description	Code
KE08K01	Direct Acting Relief Valve	X

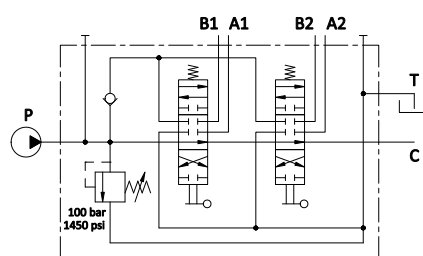
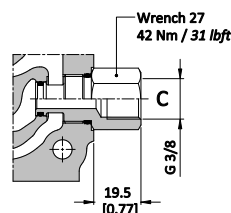
X: WITH SCREW (STANDARD)



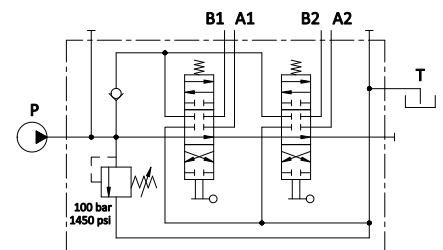
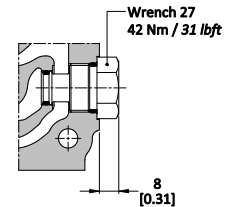
Circuit Type Options

Part Number	Description	Code
OMIT	Open Centre (Standard)	-
KCR08/10	High Pressure Carry Over Bush (HPCO)	C
KCR08/00	Close Centre Plug	KCR

C: CARRY-OVER



KCR: CLOSED CENTRE



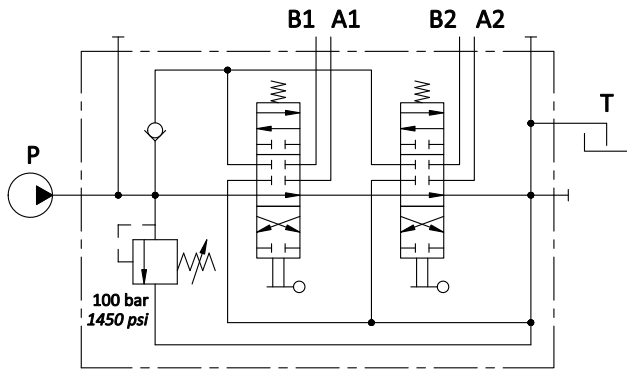
Content is subject to change without notice. Please refer to the website for the most current product information.



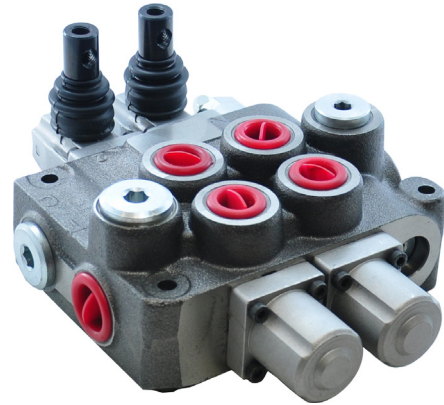
GM10 MONOBLOCK VALVES - 90 LPM

Product Specifications

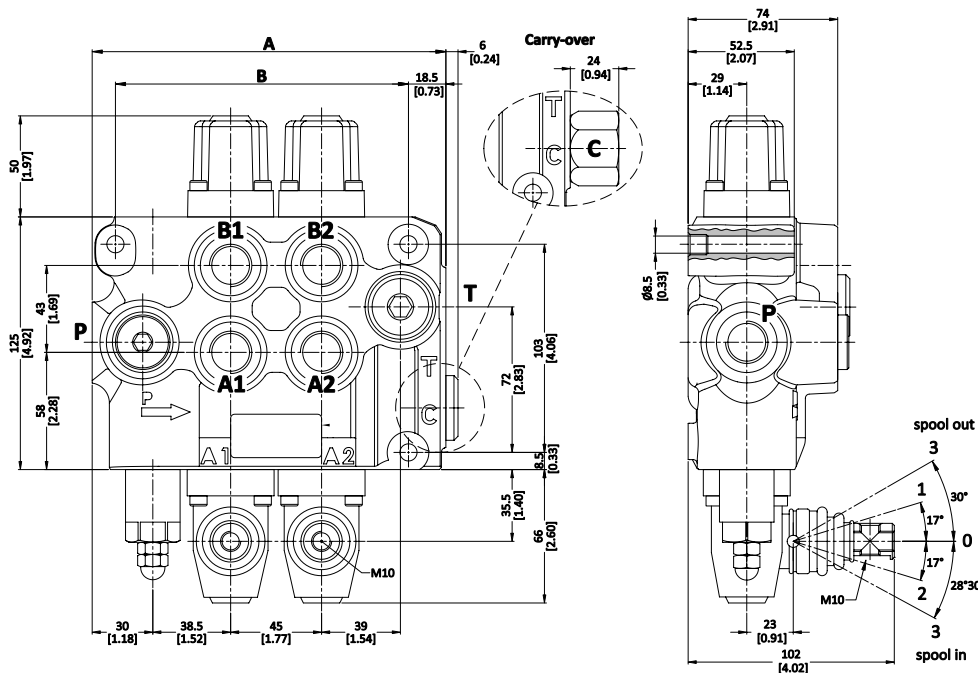
Standard Configuration



Description Example
GM10/2/YSD-YSD-X



Dimensional Data (Parallel Circuit)



Part Number	Build Code	Weight (kg)	A (mm)	B (mm)
GM10/1/YSD-X	GM10/1/YSD-X	5.8	100	130
GM10/2/YSD-X	GM10/2/YSD-YSD-X	8.3	145	175
GM10/3/YSD-X	GM10/3/YSD-YSD-YSD-X	10.9	190	220
GM10/4/YSD-X	GM10/4/YSD-YSD-YSD-YSD-X	13.4	235	265
GM10/5/YSD-X	GM10/5/YSD-YSD-YSD-YSD-YSD-X	16.5	280	310
GM10/6/YSD-X	GM10/6/YSD-YSD-YSD-YSD-YSD-YSD-X	19.2	325	355

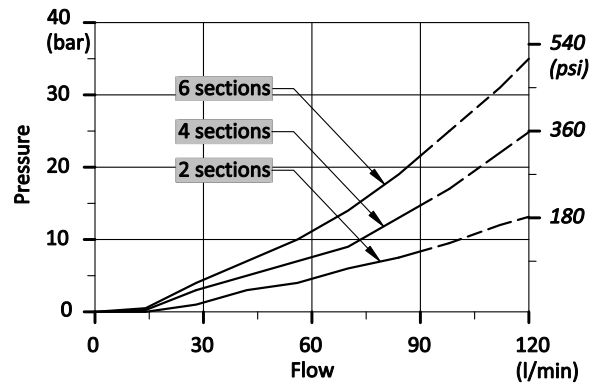
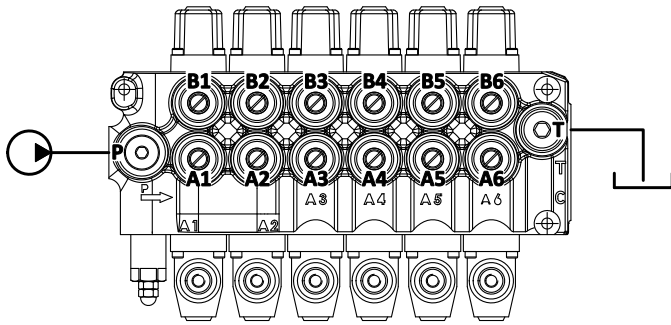
Content is subject to change without notice. Please refer to the website for the most current product information.



Performance Data - Pressure Drop vs. Flow

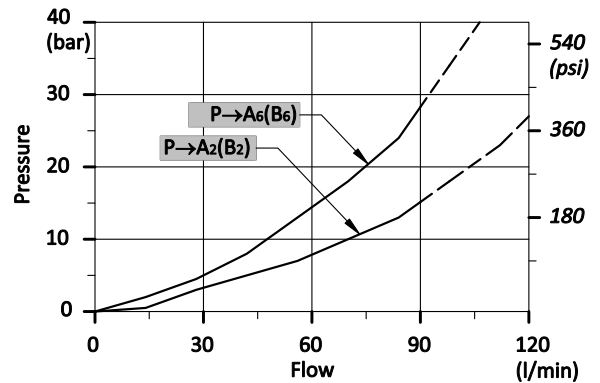
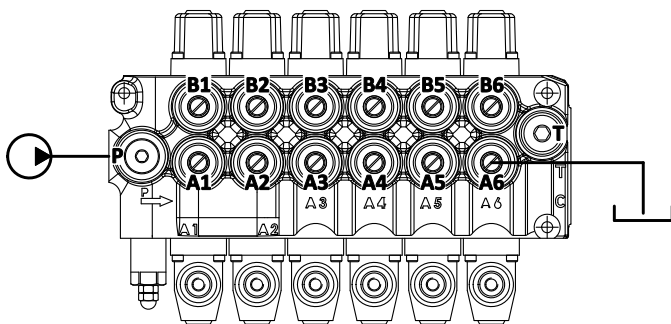
Open Centre

From side inlet to side outlet



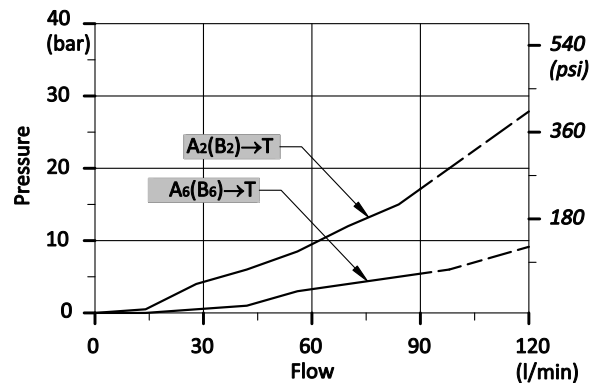
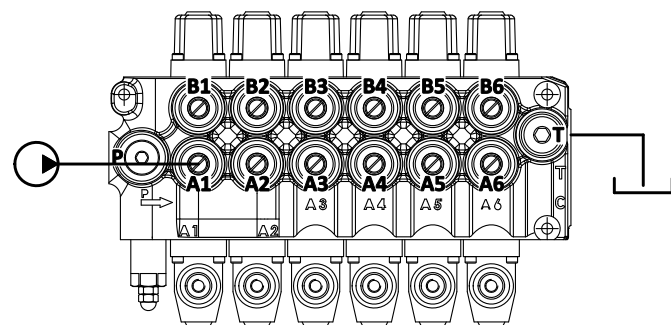
Inlet to Work Port

From side inlet to B port (spool in position 1) or A port (spool in position 2)



Work Port to Outlet

From B port (spool in position 2) or A port (spool in position 1) to side outlet



Content is subject to change without notice. Please refer to the website for the most current product information.



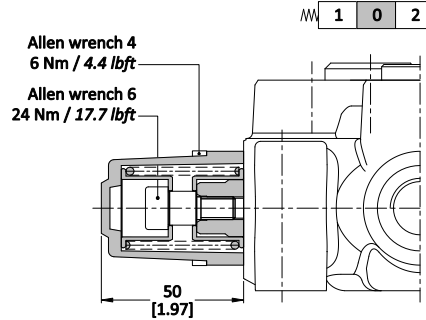
GM10 MONOBLOCK VALVES - 90 LPM

Spare Parts

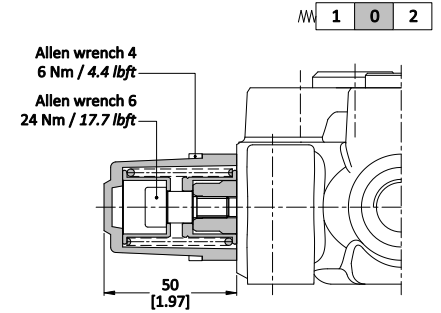
End Cap Options

Part Number	Description	Code
YBM 10072	Aluminium End Cap Only	-
M8x7mm Kit	Spring Centre Kit	Y
SM8x7mm Kit	Spring Centre Kit for Single Acting Spools (TA/TB)	Y3
K10/K	3 Position Detent	K
PNOKONT-10	Pneumatic On/Off Kit	P

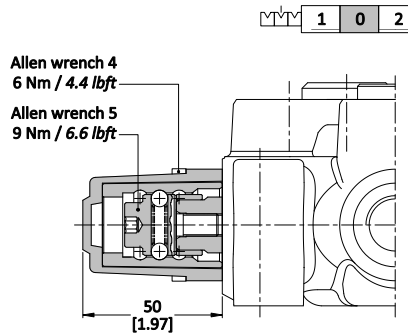
Y KIT (STANDARD)



Y3 KIT

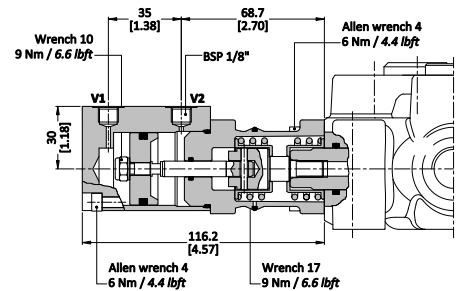


K KIT



P KIT ON/OFF PNEUMATIC CONTROL

With spring return to neutral position.



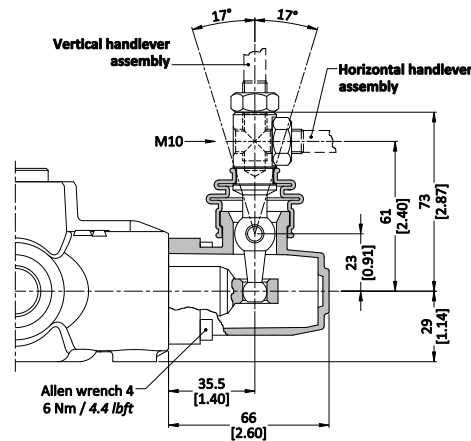
Operating features
 Pilot pressure.....: min. 5.5 bar / 80 psi
 : max. 10 bar / 145 psi

Handle Options

Part Number	Description	Code
KK09x225	Hand Lever Assembly (Aluminium Construction)	S (S18)

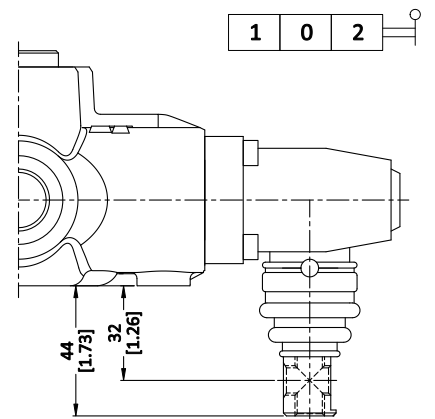
TYPE S (STANDARD)

Aluminium with protection boot lever pivot box; it can be rotated 180° (execution S18)



TYPE S18

Execution S18



Content is subject to change without notice. Please refer to the website for the most current product information.



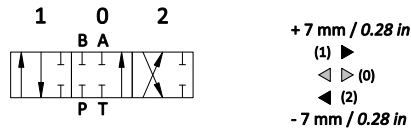
Spare Parts (Cont.)

Spool Options

Part Number	Description	Code
UBM 059	Double Acting Spool	D
UBM 059/J	Motor Spool	J
UBM 059/TA	Single Acting Spool - A Port	TA
UBM 059/TB	Single Acting Spool - B Port	TB

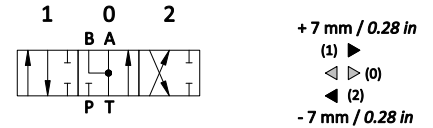
TYPE D (STANDARD)

For Y kit



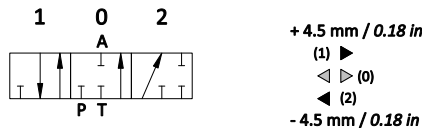
TYPE J

For Y kit



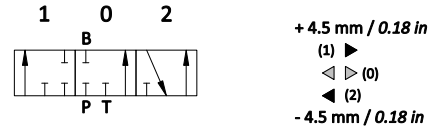
TYPE TA

For Y3 kit



TYPE TB

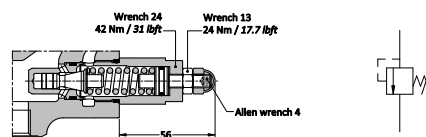
For Y3 kit



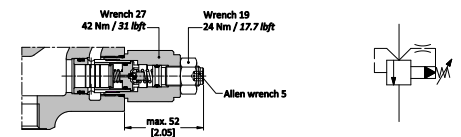
Relief Valve Options

Part Number	Description	Code
KE10K01	Direct Acting Relief Valve	X
KE10K02	Piloted Operated Relief Valve	Z

X: WITH SCREW (STANDARD)



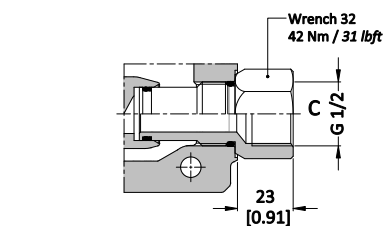
Z: WITH SCREW



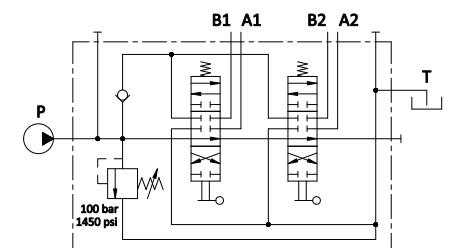
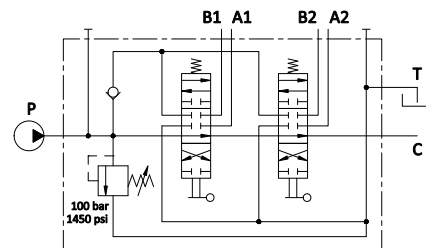
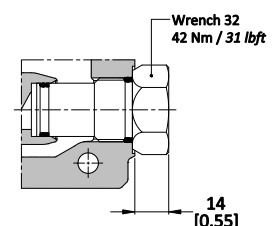
Circuit Type Options

Part Number	Description	Code
OMIT	Open Circuit (Standard)	-
KCR16/10	High Pressure Carry Over Bush (HPCO)	C
KCR16/00	Close Centre Plug	KCR

C: CARRY-OVER



KCR: CLOSED CENTRE



Content is subject to change without notice. Please refer to the website for the most current product information.



MONOBLOCK BUILD QUOTE REQUEST

Please fill out and return to THW for a Part Number and Quote.

Fax: 1300 937 035

Email: info@thwsales.com.au

Company Name: _____

Contact Name: _____

Company Address: _____

Contact Phone Number: _____

Contact Email: _____

Contact Fax: _____

<input checked="" type="checkbox"/> GM Monoblock Valve			
Valve Size			
<input type="checkbox"/> 08	45 LPM-G3/8		
<input type="checkbox"/> 10	90 LPM-G1/2		
Number of Spools			
<input type="checkbox"/> 1 Working Section	Please Note: The working sections are numbered left to right from the inlet (P) to the outlet (T)		
<input type="checkbox"/> 2 Working Sections			
<input type="checkbox"/> 3 Working Sections			
<input type="checkbox"/> 4 Working Sections			
<input type="checkbox"/> 5 Working Sections			
<input type="checkbox"/> 6 Working Sections			
	End Cap Option	Front Cap Option	Spool Option
Section 1	<input type="checkbox"/> Y Spring Centred (Standard)	<input type="checkbox"/> S Handle (Standard)	<input type="checkbox"/> D Double Acting Spool (Standard)
	<input type="checkbox"/> Y3 Spring Centred	<input type="checkbox"/> S18 Handle 180	<input type="checkbox"/> J Motor Spool
	<input type="checkbox"/> K Detended		<input type="checkbox"/> TA Single Acting Port A
	<input type="checkbox"/> P Pneumatic On/Off		<input type="checkbox"/> TB Single Acting Port B
Section 2	<input type="checkbox"/> Y Spring Centred	<input type="checkbox"/> S Handle	<input type="checkbox"/> D Double Acting Spool
	<input type="checkbox"/> Y3 Spring Centred	<input type="checkbox"/> S18 Handle 180	<input type="checkbox"/> J Motor Spool
	<input type="checkbox"/> K Detended		<input type="checkbox"/> TA Single Acting Port A
	<input type="checkbox"/> P Pneumatic On/Off		<input type="checkbox"/> TB Single Acting Port B
Section 3	<input type="checkbox"/> Y Spring Centred	<input type="checkbox"/> S Handle	<input type="checkbox"/> D Double Acting Spool
	<input type="checkbox"/> Y3 Spring Centred	<input type="checkbox"/> S18 Handle 180	<input type="checkbox"/> J Motor Spool
	<input type="checkbox"/> K Detended		<input type="checkbox"/> TA Single Acting Port A
	<input type="checkbox"/> P Pneumatic On/Off		<input type="checkbox"/> TB Single Acting Port B
Section 4	<input type="checkbox"/> Y Spring Centred	<input type="checkbox"/> S Handle	<input type="checkbox"/> D Double Acting Spool
	<input type="checkbox"/> Y3 Spring Centred	<input type="checkbox"/> S18 Handle 180	<input type="checkbox"/> J Motor Spool
	<input type="checkbox"/> K Detended		<input type="checkbox"/> TA Single Acting Port A
	<input type="checkbox"/> P Pneumatic On/Off		<input type="checkbox"/> TB Single Acting Port B
Section 5	<input type="checkbox"/> Y Spring Centred	<input type="checkbox"/> S Handle	<input type="checkbox"/> D Double Acting Spool
	<input type="checkbox"/> Y3 Spring Centred	<input type="checkbox"/> S18 Handle 180	<input type="checkbox"/> J Motor Spool
	<input type="checkbox"/> K Detended		<input type="checkbox"/> TA Single Acting Port A
	<input type="checkbox"/> P Pneumatic On/Off		<input type="checkbox"/> TB Single Acting Port B
Section 6	<input type="checkbox"/> Y Spring Centred	<input type="checkbox"/> S Handle	<input type="checkbox"/> D Double Acting Spool
	<input type="checkbox"/> Y3 Spring Centred	<input type="checkbox"/> S18 Handle 180	<input type="checkbox"/> J Motor Spool
	<input type="checkbox"/> K Detended		<input type="checkbox"/> TA Single Acting Port A
	<input type="checkbox"/> P Pneumatic On/Off		<input type="checkbox"/> TB Single Acting Port B
Relief Valve Option			
<input type="checkbox"/> X	Direct Acting Relief Valve (Standard)		
<input type="checkbox"/> Z	Pilot Operated Relief Valve (GM10 Only)		
Circuit Type			
<input type="checkbox"/> Omit	Open Centre (Standard)		
<input type="checkbox"/> C	High Pressure Carry Over (HPCO)		
<input type="checkbox"/> KCR	Closed Centre		
End Cap Material			
<input type="checkbox"/> Omit	Aluminium Construction (GM10)		
<input type="checkbox"/> PLC	Plastic Construction (GM08 Only)		

The Hydraulic Warehouse 31 Powers Road Seven Hills NSW 2147

Phone: 1300 734 351 Fax: 1300 937 035 Email: info@thwsales.com.au www.thehydraulicwarehouse.com.au



Benefits Our Resellers Enjoy....

THW Plus

THW account holders benefit from our THW Plus discount program which offers:

- ✓ Incentives for variety purchases
- ✓ Incentives for consistent purchases
- ✓ Incentives for high-volume orders
- ✓ Access to the most competitive pricing for reseller customers
- ✓ Rewards for our loyal customers



Online Ordering

Tired of waiting on your suppliers for price and availability?

Enjoy the advantage of our real-time online ordering system which can be accessed 24 hours a day, 7 days a week wherever an internet connection is available. Customers can use the system to:

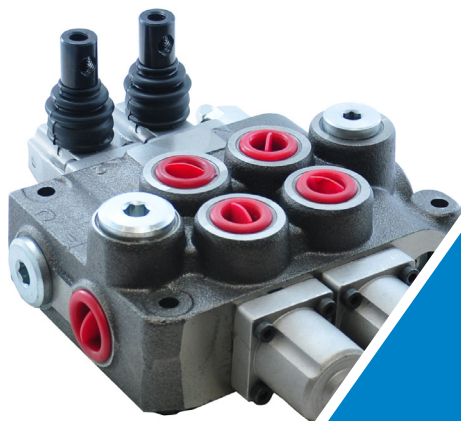
- ✓ Look up part numbers or product descriptions
- ✓ View stock availability
- ✓ Place orders
- ✓ View account statements
- ✓ Get copies of open invoices and statements



And all this available in real-time!

**Visit us now or contact us on 1300 734 351 to set up an
Online Ordering account today!**

www.thehydraulicwarehouse.com.au



THW The
HYDRAULIC
Warehouse

The Hydraulic Warehouse Pty Ltd

ABN 28 150 310 759

31 Powers Road, Seven Hills NSW 2147

Ph: 1300 734 351 Fax: 1300 937 035

E: info@thwsales.com.au

www.thehydraulicwarehouse.com.au