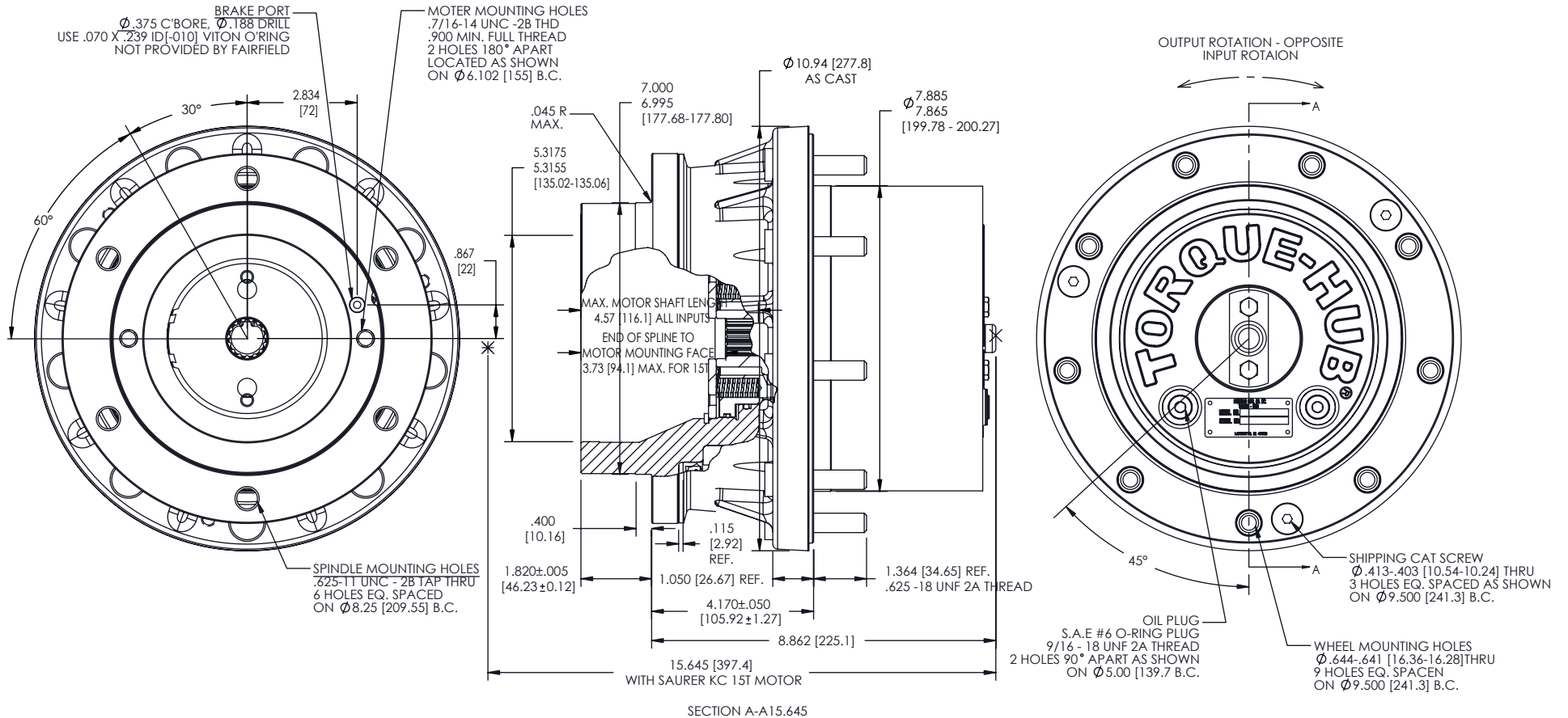


**TORQUE-HUB®**  
Planetary Final Drives



Catalog prints are representative of the units.  
Before final design request a certified print from Fairfield.

NOTE: MM SHOWN IN ( )  
MOTOR CAVITY DIMENSIONS VARY WITH MODEL

OTHER MODELS ALSO AVAILABLE  
FAIRFIELD BRAKE AVAILABLE

## 7HPA

### Performance Data

Continuous	Intermittent	Peak
30,975 in-lbs	61,950 in-lbs	Contact Fairfield
2,581 ft-lbs	5,163 ft-lbs	
3,500 N-m	7,000 N-m	
357 kg-m	714 kg-m	

For ultimate torque and horsepower capacities, contact a Torque-Hub® representative.

### Speed Limitations

**Input Speed:** 5,000 RPM Maximum Intermittent

### Weight

**Approximately** 110 lbs (50 kg)

Note: Specific models will change weights.

### Model Formula

7 – 7000 Series Torque-Hub®

**Output**

H – Hub

**Motor Input**

P – Cartridge Motor

### Spindle Brake

- A – Integral 2200 lb-in (KC Motor Only)
- F – Integral 1350 lb-in
- G – Integral 1100 lb-in
- X – Brake Spindle: no brake included

### Stud

- 0 – None
- F – 5/8-18 by 2.437 in.
- N – 1/2-20 by 2.437 in.

**With Motor:  
Contact Fairfield Application  
Engineering.**

- ZZ3 – no motor, 13T, 01 spindle
- ZZ8 – no motor, 15T, 02 spindle

### Reduction

- 019 – 18.78:1
- 024 – 24.40:1
- 029 – 29.24:1
- 036 – 35.91:1 (LC motor only)
- 048 – 47.60:1 (LC motor only)
- 057 – 57.49:1 (LC motor only)

### Options

- 0 – None
- Z – Seal Boot
- C – Cartridge Seal
- B – Cartridge Seal w/Seal Boot

**æerlikon  
fairfield**

Fairfield Manufacturing Company, Inc.  
First in Custom Gears and Drive Systems

www.fairfieldmfg.com

### Oil

Fill to half full with EP-90 oil on most applications.

Approximate Volume 23 oz. (680 cm<sup>3</sup>)

Note: Oil level and type will vary with specific model and application.

### Conditions of Bearing Curve

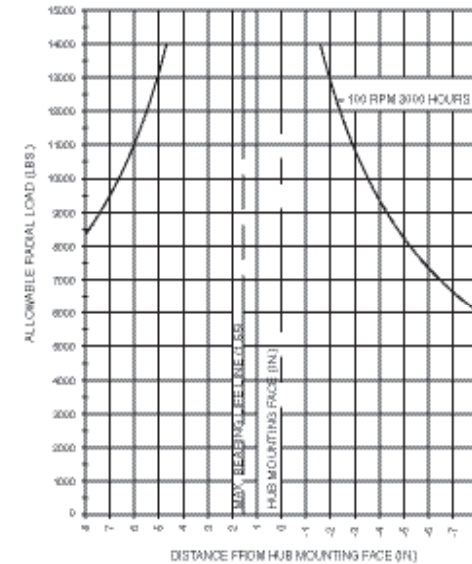
**Life = 3,000 hours B-10**

**Speed = 100 RPM output**

To adjust for loads and speeds other than shown on curve:

$$\text{Adjusted Life (hrs)} = 3,000 \left( \frac{100 \text{ RPM}}{\text{Speed (Adjusted)}} \right) \left( \frac{\text{Load (Curve)}}{\text{Load (Adjusted)}} \right)^{\frac{10}{3}}$$

### Bearing Curve



**7 H P F 01 0 ZZ3 0 057**

	Spindle		Hub	
	Flange Mtg. Dia.	B.C.	Mounting Dia.	B.C.
01	<b>7.000 177.78</b>	<b>(6) 5/8 - 11 UNC 2B</b>	<b>7.885 200.27</b>	<b>(9) .644-.641 [16.36-16.28]</b>
	<b>6.995 177.67</b>	<b>on 8.250 [209.55] B.C.</b>	<b>7.865 199.78</b>	<b>on 9.500 [241.3] B.C.</b>
	Sauer LC Motor 13T			
02	Sauer KC Motor 15T input (mounting same as 01) 19:1, 24:1, and 29:1 ratios only			

Torque-Hub is a registered trademark of Fairfield.  
© 2003 Fairfield Manufacturing Company, Inc.