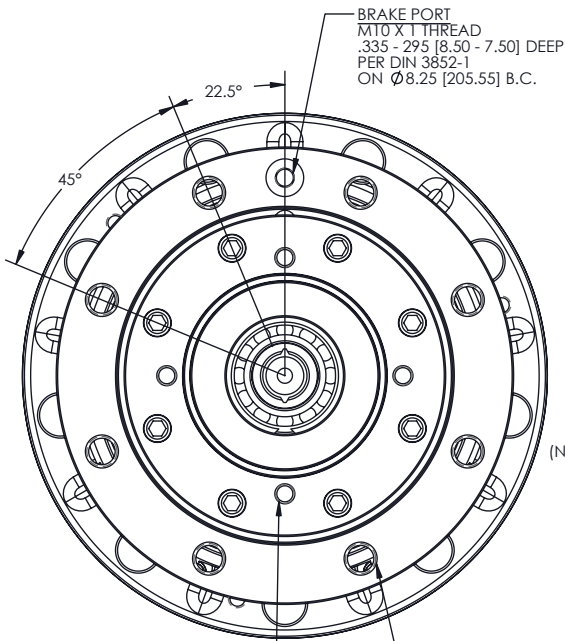
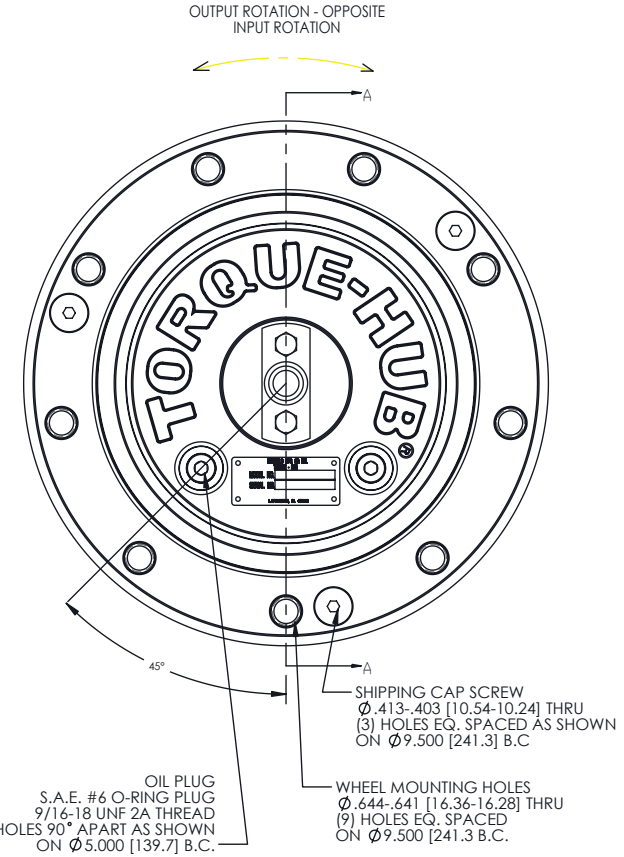
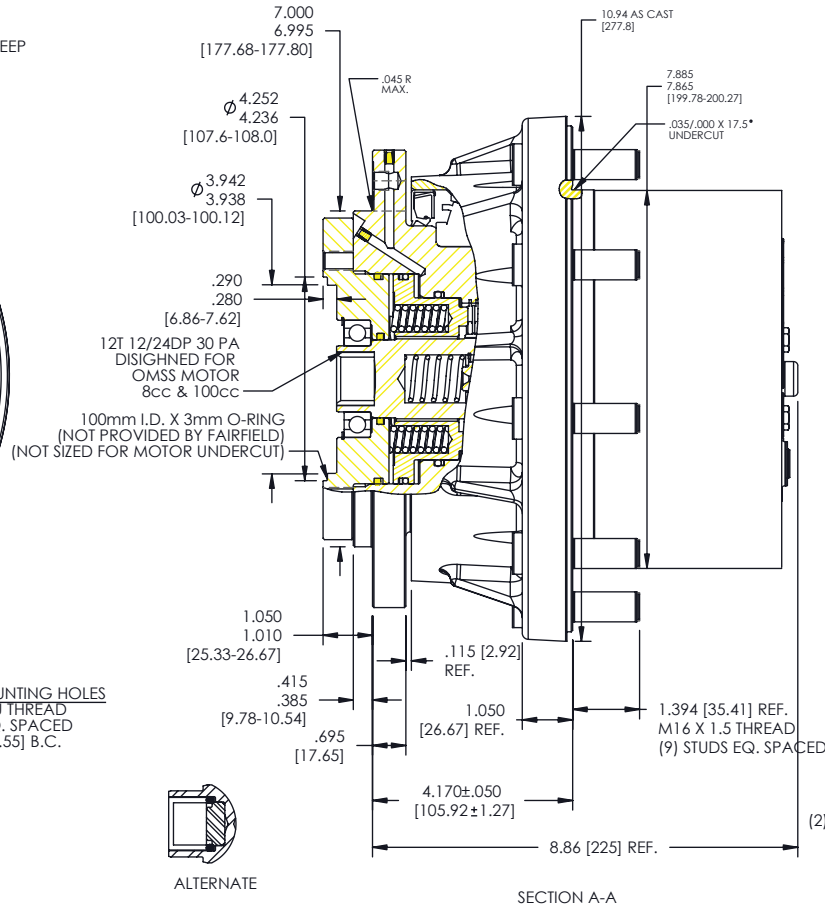


**TORQUE-HUB®**  
Planetary Final Drives



MOTOR MOUNTING HOLES  
M10 X 1.5 THREAD  
.635 - .3625 DEEP  
(4) HOLES EQ. SPACED  
LOCATED AS SHOWN  
ON Ø4.921 [125] B.C.

SPINDLE MOUNTING HOLES  
M16 X 2 THRU THREAD  
(8) HOLES EQ. SPACED  
ON 8.25 [209.55] B.C.



## 7HLH

### Performance Data

Continuous	Intermittent	Peak
30,975 in-lbs	61,950 in-lbs	Contact Fairfield
2,581 ft-lbs	5,163 ft-lbs	
3,500 N-m	7,000 N-m	
357 kg-m	714 kg-m	

For ultimate torque and horsepower capacities, contact a Torque-Hub® representative.

### Speed Limitations

Input Speed: 4,000 RPM Maximum Intermittent

### Weight

Approximately 117lbs (53kg)

Note: Specific models will change weights.

### 7 HLH Model Formula

7 - 7000 Series

H - Hub Output

Motor Input

L - OMSS80 & OMSS100 Motor

### Oil

Fill to half full with 90 weight gear lube with EP additive on most applications.

Note: Oil level and type will vary with specific model and application.

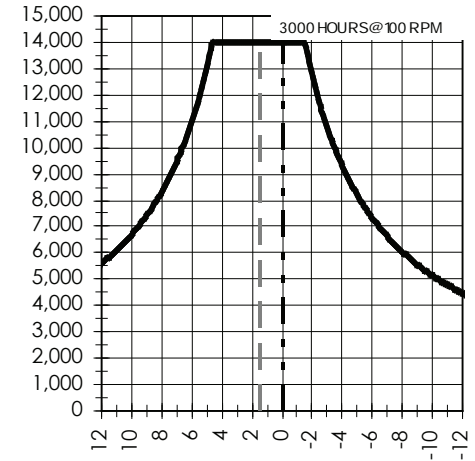
### Conditions of Bearing Curve

Life = 3,000 hours B10  
Speed = 100 RPM output

To adjust for loads and speeds other than shown on curve:

$$\text{Adjusted Life (hrs)} = 3,000 \left( \frac{100 \text{ RPM}}{\text{Speed (Adjusted)}} \right) \left( \frac{\text{Load (Curve)}}{\text{Load (Adjusted)}} \right)^{\frac{10}{3}}$$

### Bearing Curve



DISTANCE FROM HUB MOUNTING FACE

7 H L H 02 Y ZZZ 0 048

Motor Model Code

ZZZ - 12T, 12/24 Spline

Options

0 - None  
Z - Seal Boot  
C - Cartridge Seal  
B - Cartridge Seal with Seal Boot

Reduction

019 - 18.78  
024 - 24.40  
029 - 29.24  
036 - 35.91  
048 - 47.60  
057 - 57.49

Stud

0 - None  
F - 5/18 -18 x 2.437  
N - 1/2 - 20 x 2.437  
Y - M16 x 1.5

**æerlikon**  
**fairfield**

Fairfield Manufacturing Company, Inc.  
First in Custom Gears and Drive Systems

www.fairfieldmfg.com

Spindle		Hub	
Flange Mounting Dia.	B.C.	Mounting Diameter	B.C.
02	7.000/6.995	(8) M16 x 2 on 8.25 B.C.	(9) .644/.641 on 9.50 B.C.