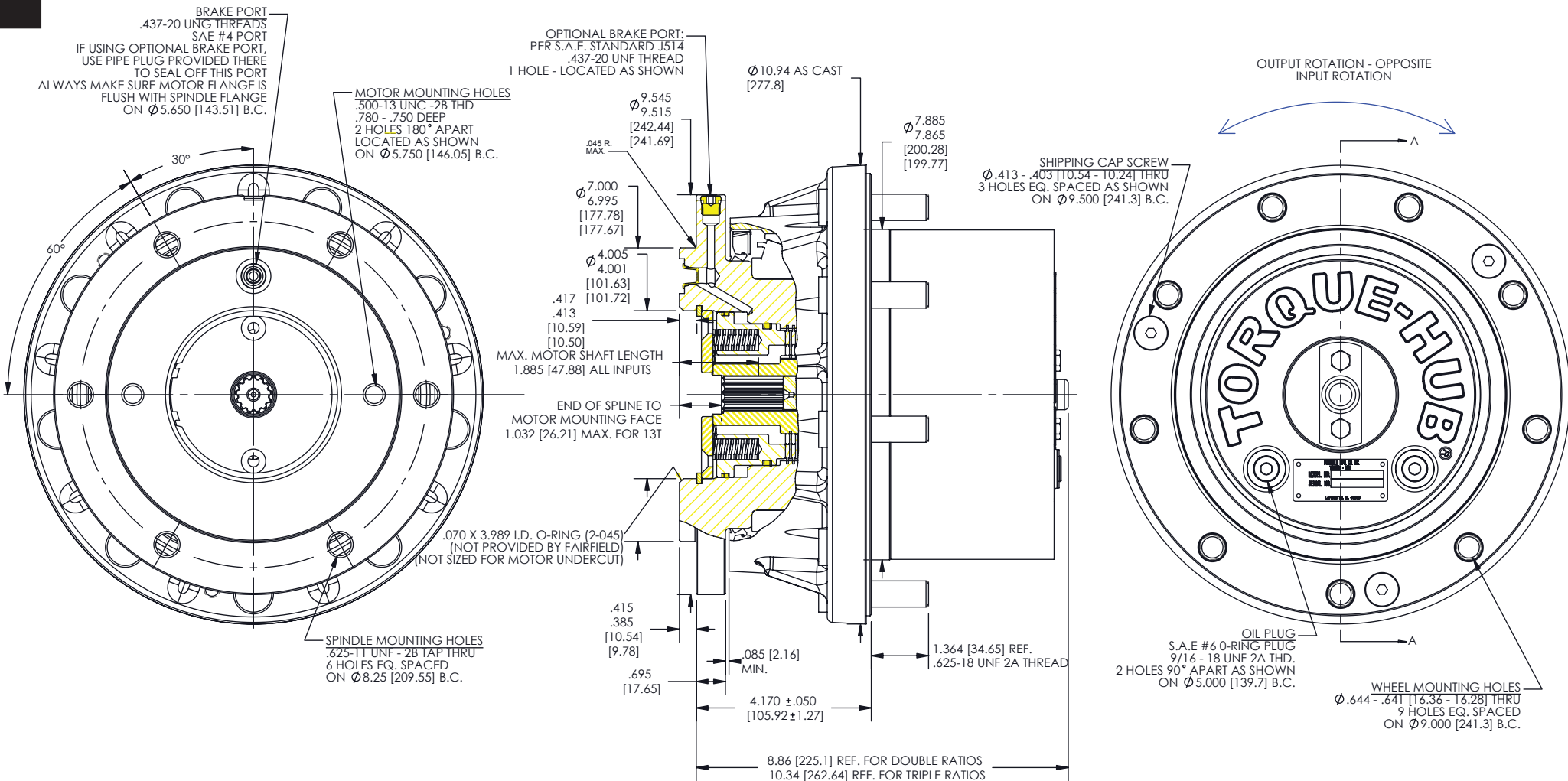


TORQUE-HUB®
Planetary Final Drives



Catalog prints are representative of the units.
Before final design request a certified print from Fairfield.

NOTE: MM SHOWN IN ()
MOTOR CAVITY DIMENSIONS VARY WITH MODEL

OTHER MODELS ALSO AVAILABLE
FAIRFIELD BRAKE AVAILABLE

7HBA

Performance Data

Continuous	Intermittent	Peak
30,975 in-lbs	61,950 in-lbs	Contact Fairfield
2,581 ft-lbs	5,163 ft-lbs	
3,500 N-m	7,000 N-m	
357 kg-m	714 kg-m	

For ultimate torque and horsepower capacities, contact a Torque-Hub® representative.

Speed Limitations

Input Speed: 5,000 RPM Maximum Intermittent

Weight

Approximately 110 lbs (50 kg)

Note: Specific models will change weights.

7HBA Model Formula

7 – 7000 Series Torque-Hub®

Output
H – Hub

Motor Input
A – SAE "A" motor mount
B – SAE "B" motor mount

Spindle Brake
A – Integral 2200 lb-in
B – Integral 1900 lb-in
C – Integral 1600 lb-in
D – Integral 1400 lb-in
E – Integral 1250 lb-in
X – Brake Spindle: no brake included

æerlikon
fairfield
Fairfield Manufacturing Company, Inc.
First in Custom Gears and Drive Systems
www.fairfieldmfg.com

Oil

Fill to half full with EP-90 oil on most applications.

Approximate Volume 23 oz. (680 cm³)

Note: Oil level and type will vary with specific model and application.

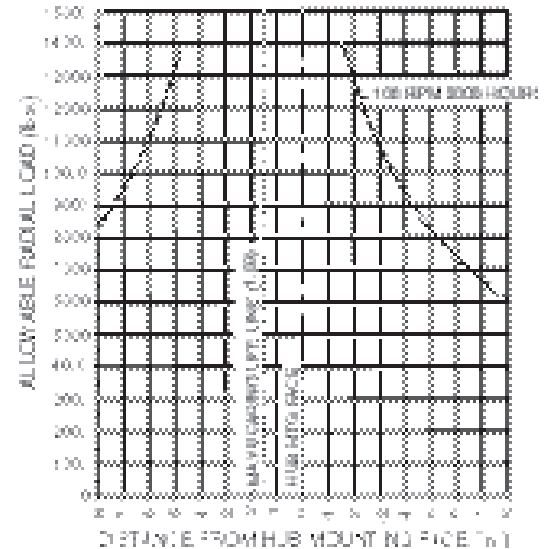
Conditions of Bearing Curve

Life = 3,000 hours B-10
Speed = 100 RPM output

To adjust for loads and speeds other than shown on curve:

$$\text{Adjusted Life (hrs)} = 3,000 \left(\frac{100 \text{ RPM}}{\text{Speed (Adjusted)}} \right) \left(\frac{\text{Load (Curve)}}{\text{Load (Adjusted)}} \right)^{\frac{10}{3}}$$

Bearing Curve



7 H B A 01 0 0B3 0 048

Motor Model Code
0A3 – SAE A pilot w/13T input
0B3 – SAE B pilot w/13T input

Stud
0 – None
F – 5/8-18 by 2.437 in.
N – 1/2-20 by 2.437 in.

Reduction
019 – 18.78:1
024 – 24.40:1
029 – 29.24:1
036 – 35.91:1
048 – 47.60:1
057 – 57.49:1

Options
0 – None
Z – Seal Boot
C – Cartridge Seal
B – Cartridge Seal & Seal Boot

	Spindle		Hub	
	Flange Mounting Dia.	B.C.	Mounting Dia.	B.C.
01	7.000 6.995	(6) 5/8 - 11 UNC 2B on 8.250 B.C.	7.885 7.865	(9) .644/.641 on 9.500 B.C.
04	Same as 01 with (2) spindle side #6 SAE o-ring plugs			