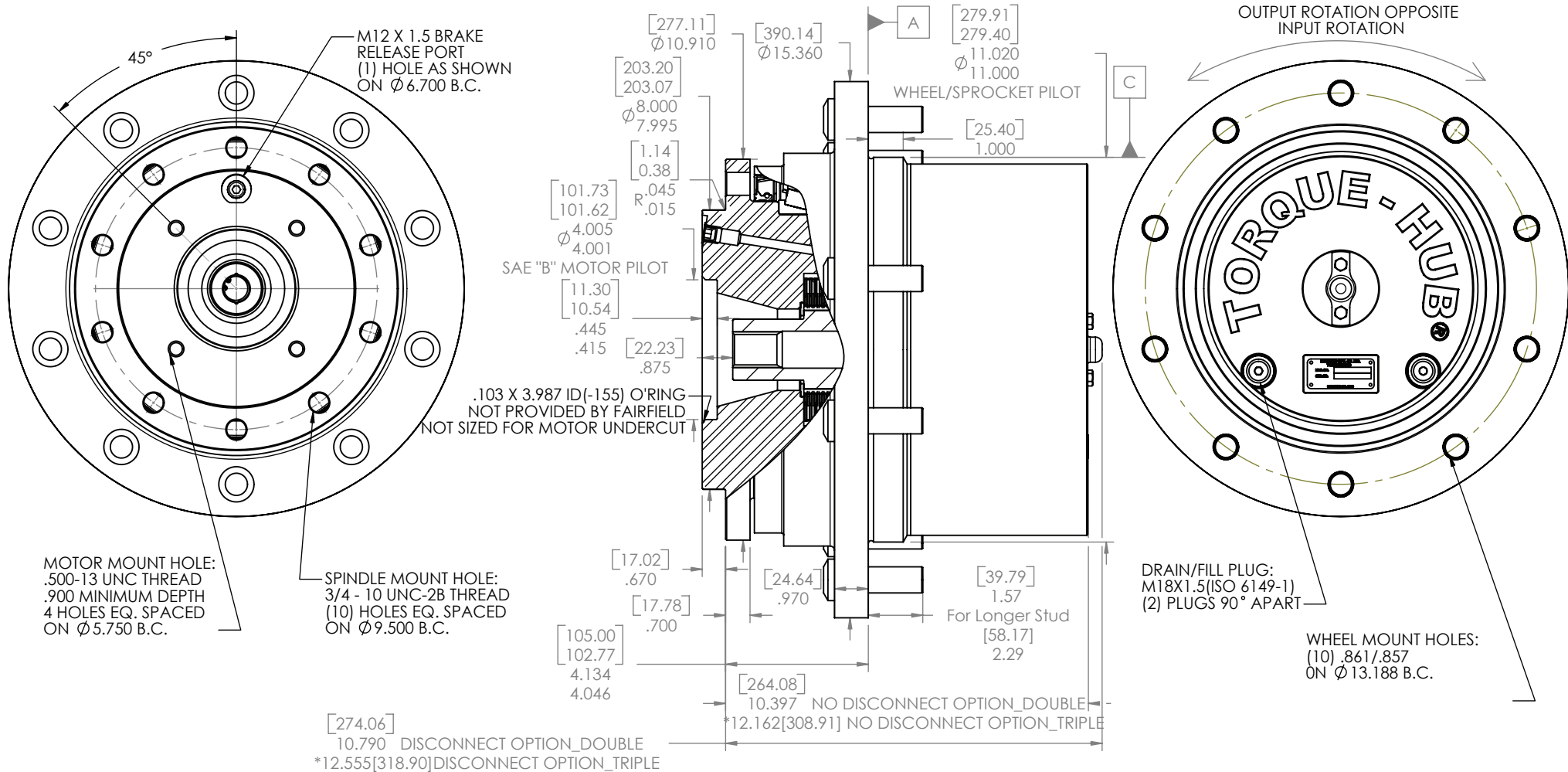


TORQUE-HUB®
Planetary Final Drives



oerlikon
fairfield

Catalog prints are representative of the units.
Before final design request a certified print from Fairfield.

NOTE: MM SHOWN IN ()
MOTOR CAVITY DIMENSIONS VARY WITH MODEL

OTHER MODELS ALSO AVAILABLE
FAIRFIELD BRAKE AVAILABLE

18HBA

Performance Data

Continuous	Intermittent	Peak
9,000 Nm	18,000 Nm	Contact Fairfield
79,650 lb-in	159,300 lb-in	

For ultimate torque and horsepower capacities, contact a Torque-Hub® representative.

Speed Limitations

Input Speed: 5,000 RPM Maximum Intermittent

Weight

Approximately: 225 lbs (102 kg)

Note: Specific models will change weights.

Model Formula

Oil

Fill to half full with EP-90 oil on most applications.

Approximate Volume: 50 oz. (1,479 cm³)

Note: Oil level and type will vary with specific model and application.

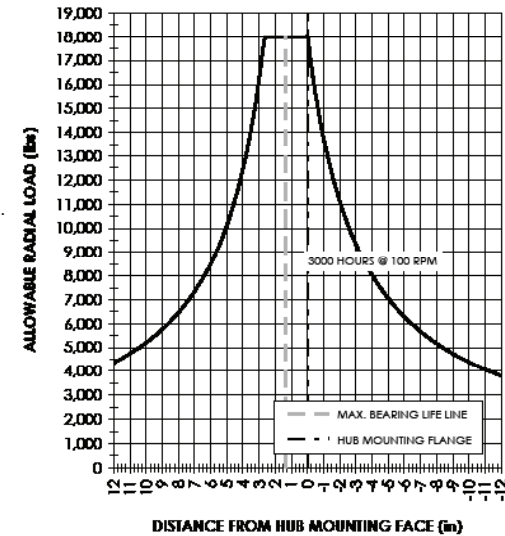
Conditions of Bearing Curve

Life = 3,000 hours B-10
Speed = 100 RPM output

To adjust for loads and speeds other than shown on curve:

$$\text{Adjusted Life (hrs)} = 3,000 \left(\frac{100 \text{ RPM}}{\text{Speed (Adjusted)}} \right) \left(\frac{\text{Load (Curve)}}{\text{Load (Adjusted)}} \right)^{\frac{10}{3}}$$

Bearing Curve



18 – 18000 Series Torque Hub

Output
H – Hub

Motor Input
B – SAE "B" motor mount

18 H B A 02 0 8 0 G 0 048

Disengage
0 – None
G – Disengage

Special Option
0 – None

Input Splines
3 – 13T 16/32
8 – 15T 16/32

Studs
0 – None
1 – .750-16 UNC by 2.53"
8 – .750-16 UNC by 3.25"

Reduction
015 – 14.88:1
018 – 17.97:1
021 – 21.14:1
025 – 24.92:1
029 – 29.24:1
036 – 35.92:1
041 – 40.84:1
048 – 47.60:1
057 – 57.49:1
079 – 78.99:1 (T)
099 – 98.61:1 (T)
121 – 120.60:1 (T)

Options
0 – None
Z – Seal Boot

æerlikon
fairfield

Fairfield Manufacturing Company, Inc.
First in Custom Gears and Drive Systems

www.fairfieldmfg.com

Spindle Brake

A – Integral 5000 lb-in [565 Nm]
B – Integral 4250 lb-in [480 Nm]
C – Integral 3400 lb-in [385 Nm]
D – Integral 2940 lb-in [352 Nm]
X – Empty Brake Cavity

	Spindle		Hub	
	Flange	B.C.	Mounting	B.C.
	Mtg. Dia.		Dia.	
02	8.000 [203.20]	(10) .750-16 UNC-2A	11.020 [279.91]	(10) .861/.857 THRU
	7.995 [203.07]	on 9.500 [241.3] B.C.	11.000 [279.40]	on 13.188 [335] B.C.

Torque-Hub is a registered trademark of Fairfield.
© 2003 Fairfield Manufacturing Company, Inc.