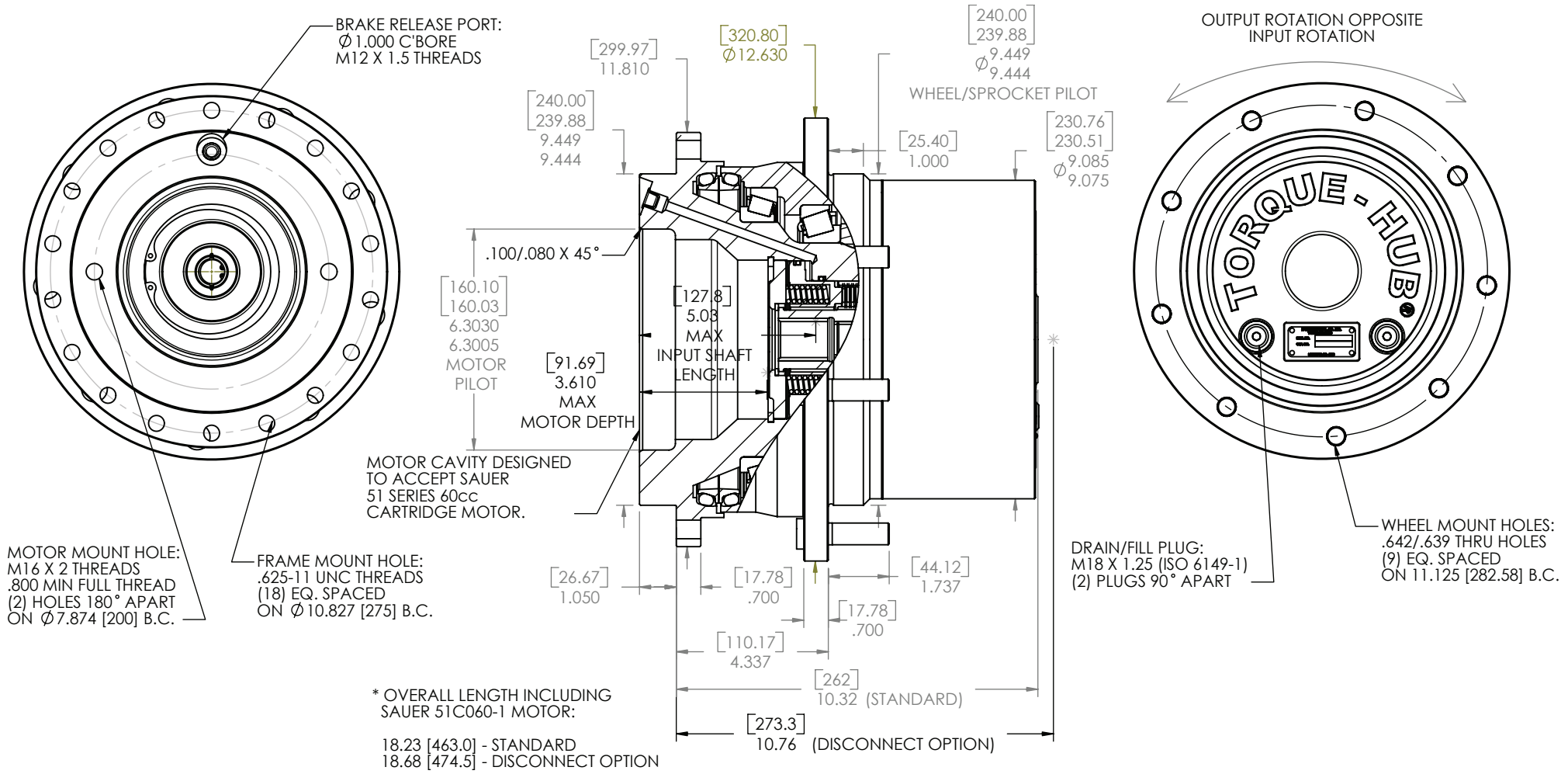


**TORQUE-HUB**  
Planetary Final Drives



**oerlikon**  
fairfield

Catalog prints are representative of the units.  
Before final design request a certified print from Fairfield.

NOTE: MM SHOWN IN ( )  
MOTOR CAVITY DIMENSIONS VARY WITH MODEL

OTHER MODELS ALSO AVAILABLE  
FAIRFIELD BRAKE AVAILABLE

## 11HPE

### Performance Data

Continuous	Intermittent	Peak
5,500 Nm	11,000 Nm	Contact Fairfield
48,675 lb-in	97,350 lb-in	

For ultimate torque and horsepower capacities, contact a Torque-Hub® representative.

### Speed Limitations

Input Speed: 5,000 RPM Maximum Intermittent

### Weight

Approximately: 172 lbs (77 kg)

Note: Specific models will change weights.

### Model Formula

11 – 11000 Series Torque Hub

#### Output

H – Hub

#### Motor Input

P – Cartridge Motor

**æerlikon**  
**fairfield**

Fairfield Manufacturing Company, Inc.  
First in Custom Gears and Drive Systems

www.fairfieldmfg.com

### Oil

Fill to half full with EP-90 oil on most applications.

Approximate Volume: 30.5 oz. (902 cm<sup>3</sup>)

Note: Oil level and type will vary with specific model and application.

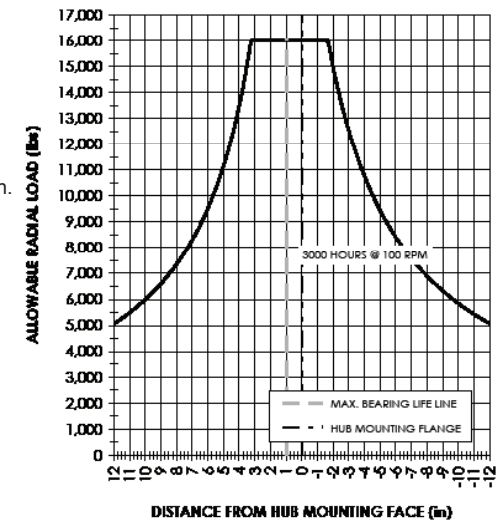
### Conditions of Bearing Curve

Life = 3,000 hours B-10  
Speed = 100 RPM output

To adjust for loads and speeds other than shown on curve:

$$\text{Adjusted Life (hrs)} = 3,000 \left( \frac{100 \text{ RPM}}{\text{Speed (Adjusted)}} \right) \left( \frac{\text{Load (Curve)}}{\text{Load (Adjusted)}} \right)^{\left( \frac{10}{3} \right)}$$

### Bearing Curve



11 H P E 21 0 4 0 G 0 015

#### Reduction

015 – 14.88:1  
018 – 17.97:1  
021 – 21.14:1  
026 – 26.02:1  
030 – 29.62:1

#### Disengage

0 – None

G – Disengage

#### Special Option

0 – None

#### Input Splines

4 – 14T 12/24

Z – W30x2x14x9g DIN 5480

#### Studs

0 – None

F – 5/8-18 by 2.437"

#### Options

0 – None

#### Spindle Brake

Sauer 51 Series 60cc Motor Cavity

E - Integral 3200 lb-in [362 N.m]

F - Integral 2560 lb-in [280 N.m]

G - Integral 1925 lb-in [218 N.m]

H - Integral 1280 lb-in [145 N.m]

X - Empty Brake Cavity

	Spindle		Hub	
	Flange	B.C.	Mounting	B.C.
	Mtg. Dia.		Dia.	
21	9.449 [240.00]	(18) .625-11 UNC 2B	9.449 [240.00]	(9) .642-.639 [16.31-16.23]
	9.444 [239.88]	on 10.827 [275] B.C.	9.444 [239.88]	on 11.125 [282.58] B.C.

Torque-Hub is a registered trademark of Fairfield.  
© 2003 Fairfield Manufacturing Company, Inc.