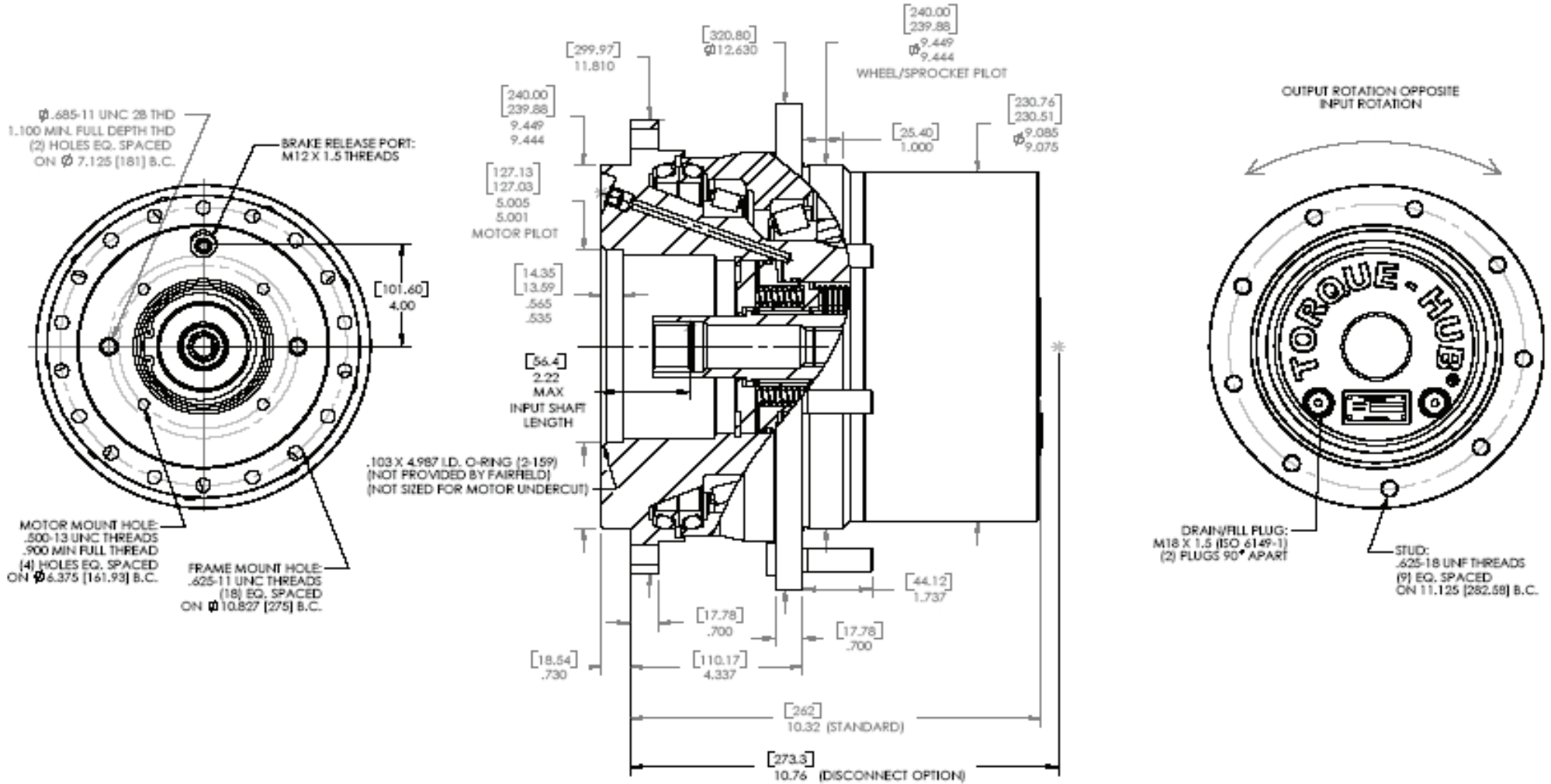


**TORQUE-HUB**  
Planetary Final Drives



**oerlikon**  
**fairfield**

Catalog prints are representative of the units.  
Before final design request a certified print from Fairfield.

NOTE: MM SHOWN IN ( )  
MOTOR CAVITY DIMENSIONS VARY WITH MODEL

OTHER MODELS ALSO AVAILABLE  
FAIRFIELD BRAKE AVAILABLE

## 11HCE

### Performance Data

| Continuous               | Intermittent              | Peak              |
|--------------------------|---------------------------|-------------------|
| 5,500 Nm<br>48,675 lb-in | 11,000 Nm<br>97,350 lb-in | Contact Fairfield |

For ultimate torque and horsepower capacities, contact a Torque-Hub® representative.

### Speed Limitations

Input Speed: 5,000 RPM Maximum Intermittent

### Weight

Approximately: 172 lbs (77 kg)

Note: Specific models will change weights.

### Model Formula

11 – 11000 Series Torque Hub

Output  
H – Hub

Motor Input  
C – SAE "C" motor mount

**æerlikon**  
**fairfield**

Fairfield Manufacturing Company, Inc.  
First in Custom Gears and Drive Systems

www.fairfieldmfg.com

### Spindle Brake

- E – Integral 3200 lb-in [362 Nm]
- F – Integral 2560 lb-in [280 Nm]
- G – Integral 1925 lb-in [218 Nm]
- H – Integral 1280 lb-in [145 Nm]
- X – Empty Brake Cavity

### Oil

Fill to half full with EP-90 oil on most applications.

Approximate Volume: 30.5 oz. (902 cm<sup>3</sup>)

Note: Oil level and type will vary with specific model and application.

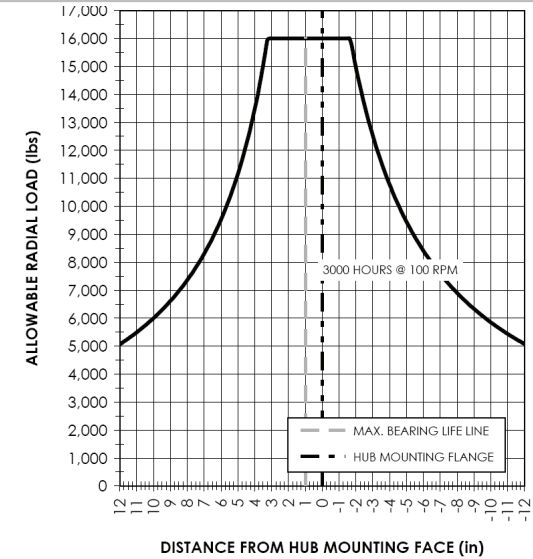
### Conditions of Bearing Curve

Life = 3,000 hours B-10  
Speed = 100 RPM output

To adjust for loads and speeds other than shown on curve:

$$\text{Adjusted Life (hrs)} = 3,000 \left( \frac{100 \text{ RPM}}{\text{Speed (Adjusted)}} \right) \left( \frac{\text{Load (Curve)}}{\text{Load (Adjusted)}} \right)^{\frac{10}{3}}$$

### Bearing Curve



11 H C E 01 0 4 0 0 0 015

Disengage  
0 – None  
G – Disengage

Special Option  
0 – None

Input Splines  
4 – 14T 12/24

Studs  
0 – None  
F – 5/8-18 by 2.437"

Reduction  
015 – 14.88:1  
018 – 17.97:1  
021 – 21.14:1  
026 – 26.02:1  
030 – 29.62:1

Options  
0 – None

|    | Spindle                          |   | Hub                              |  |
|----|----------------------------------|---|----------------------------------|--|
|    | Flange Mtg. Dia.                 | B.C.  | Mounting Dia.                    | B.C.   |
| 01 | 9.449 [240.00]<br>9.444 [239.88] | (18) .625-11 UNC 2B<br>on 10.827 [275] B.C. | 9.449 [240.00]<br>9.444 [239.88] | (9) .642-.639 [16.31-16.23]<br>on 11.125 [282.58] B.C. |

Torque-Hub is a registered trademark of Fairfield.  
© 2003 Fairfield Manufacturing Company, Inc.