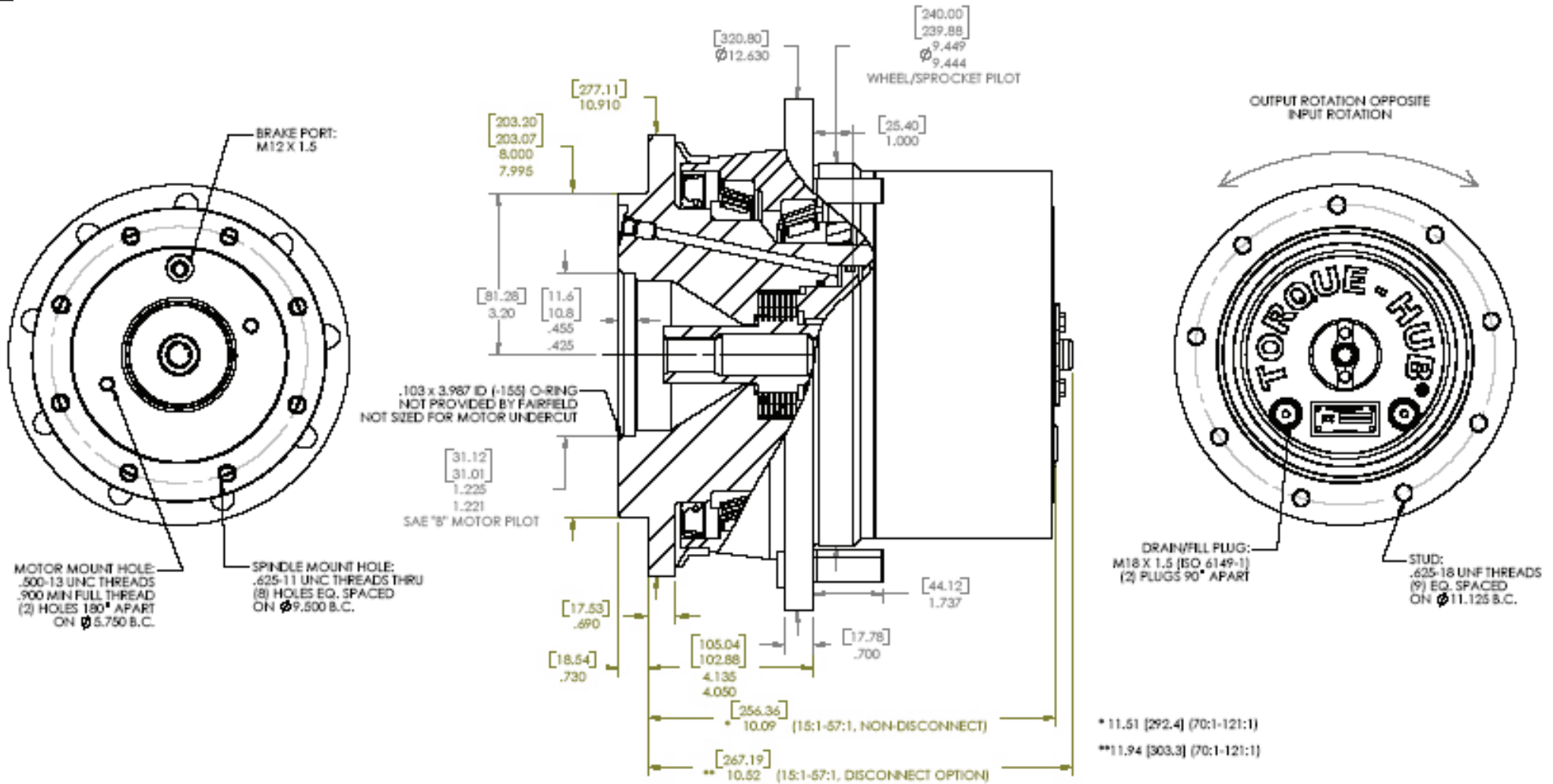


11HBA Application Sheet

TORQUE-HUB
Planetary Final Drives



oerlikon
fairfield

Catalog prints are representative of the units.
 Before final design request a certified print from Fairfield.

NOTE: MM SHOWN IN ()
 MOTOR CAVITY DIMENSIONS VARY WITH MODEL

OTHER MODELS ALSO AVAILABLE
 FAIRFIELD BRAKE AVAILABLE

11HBA

Performance Data

Continuous	Intermittent	Peak
5,500 Nm 48,675 lb-in	11,000 Nm 97,350 lb-in	Contact Fairfield

For ultimate torque and horsepower capacities, contact a Torque-Hub® representative.

Speed Limitations

Input Speed: 5,000 RPM Maximum Intermittent

Weight

Approximately: 170 lbs (77 kg)

Note: Specific models will change weights.

Model Formula

11 – 11000 Series Torque Hub

Output
H – Hub

Motor Input
B – SAE "B" motor mount

æerlikon
fairfield

Fairfield Manufacturing Company, Inc.
First in Custom Gears and Drive Systems

www.fairfieldmfg.com

Spindle Brake

- A - Integral 2500 lb-in [283 N.m]
- B - Integral 2000 lb-in [226 N.m]
- C - Integral 1500 lb-in [170 N.m]
- D - Integral 1000 lb-in [113 N.m]
- X - Empty Brake Cavity

Oil

Fill to half full with EP-90 oil on most applications.

Approximate Volume: 30.5 oz. (902 cm³)

Note: Oil level and type will vary with specific model and application.

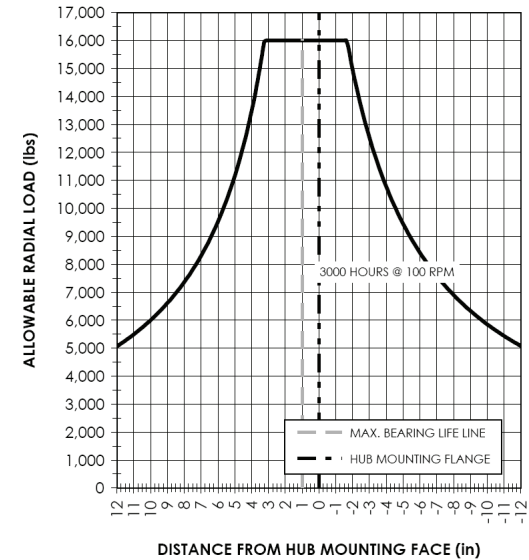
Conditions of Bearing Curve

Life = 3,000 hours B-10
Speed = 100 RPM output

To adjust for loads and speeds other than shown on curve:

$$\text{Adjusted Life (hrs)} = 3,000 \left(\frac{100 \text{ RPM}}{\text{Speed (Adjusted)}} \right) \left(\frac{\text{Load (Curve)}}{\text{Load (Adjusted)}} \right)^{\left(\frac{10}{3} \right)}$$

Bearing Curve



11 H B A 02 0 8 0 G 0 015

Disengage
0 – None
G – Disengage

Special Option
0 – None

Input Splines
3 – 13T 16/32
8 – 15T 16/32

Studs
0 – None
F – 5/8-18 by 2.437"

Reduction
015 – 14.88:1
018 – 17.97:1
021 – 21.14:1
026 – 26.02:1
030 – 29.62:1
036 – 35.92:1
041 – 40.84:1
048 – 47.60:1
057 – 57.49:1

Options
0 – None
Z – Seal Boot
C – Cartridge Seal
B – Cartridge Seal with Boot

Spindle		Hub	
Flange Mtg. Dia.	B.C.	Mounting Dia.	B.C.
02 8.000 [203.20] 7.995 [203.07]	(8) .625-11 UNC 2B on 9.500 [241.3] B.C.	9.449 [240.00] 9.444 [239.88]	(9) .642/.639 [16.31-16.23] holes on 11.125 [282.58] B.C.

Torque-Hub is a registered trademark of Fairfield.
© 2003 Fairfield Manufacturing Company, Inc.