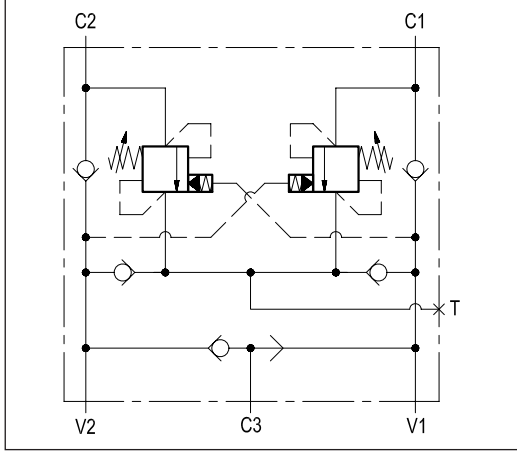
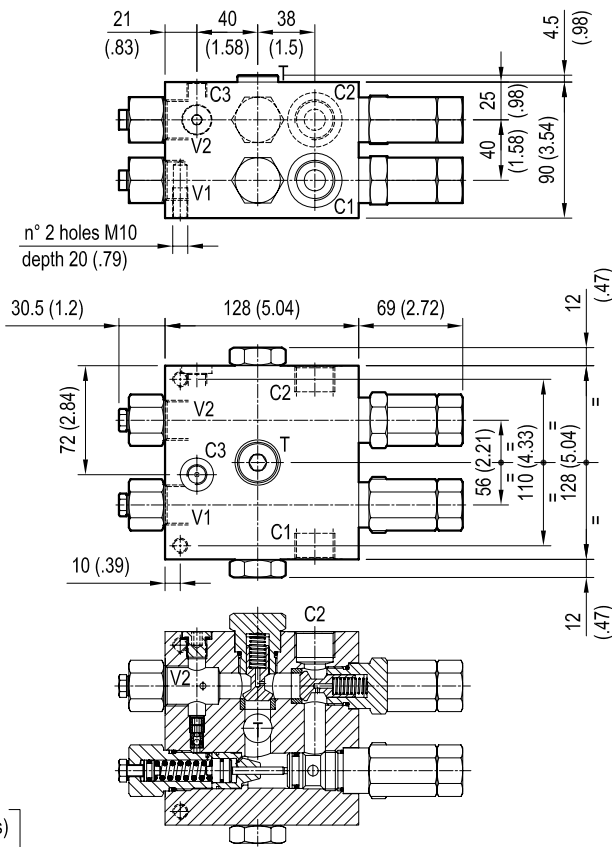


**MOTION CONTROL
WITH BRAKE RELEASE PORT**

VAA-B-SICN-ST-VF-150

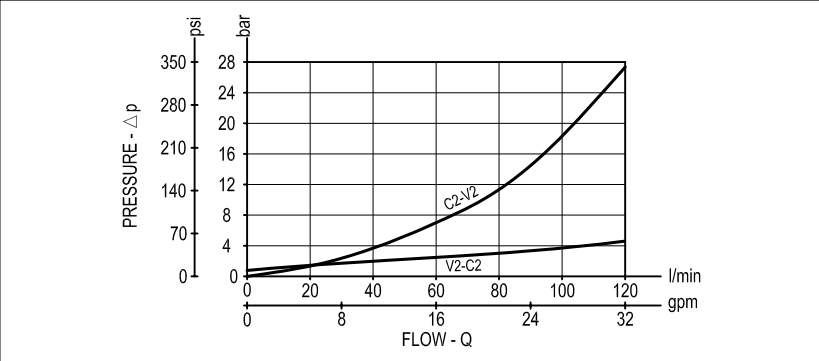
05.71.45 - X - 04 - Z



TECHNICAL DATA

- Operating pressure: up to 210 bar (3000 psi)
- Max flow: 120 l/min (32 gpm)
- Aluminium body
NOTE: aluminium bodies are often strong enough for operating pressures exceeding 210 bar (3000 psi), depending from the fatigue life expected in the specific application. If in doubt, consult our Service Network.
- Weight: 5.7 kg (12.6 lbs)
- Relief setting: at least 1.3 times the highest expected load.

It provides static and dynamic motion control by regulating flow and pressure IN and OUT of the hydraulic motor at ports C1 and C2. When installed close to the motor, it can stop runaway in case of hose failure. The check sections allow free flow into the motor and prevent reverse movement; the pilot assisted relief valves control the movement when pilot pressure is applied. A system of check valves allows cross line relief; an optional make-up port (T) allows to compensate for any volume change. Through port C3, a shuttle valve directs either V1 or V2 pressure to the spring actuated brake for brake releasing.



X	PILOT RATIO	
03	7.6 : 1	
10	3 : 1	

Z	SPRINGS				
	Adj. press. range bar (psi)	Pres. increase bar/turn (psi/turn)	Std. setting bar (psi) Q=5 l/min	Ordering code	Colour
35	100-350 (1450-5000)	105 (1523)	150 (2200)	03.51.01.142	yellow

	PORT SIZE		
	V1-V2-C1-C2	C3	T
	G 3/4	G 1/4	G 1/2