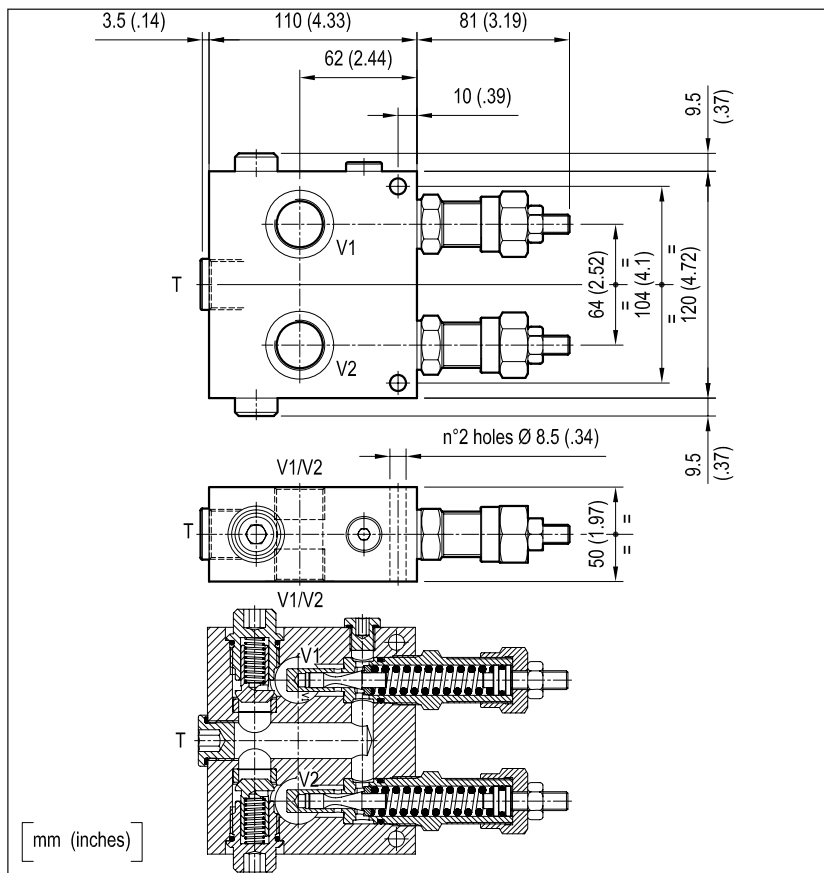


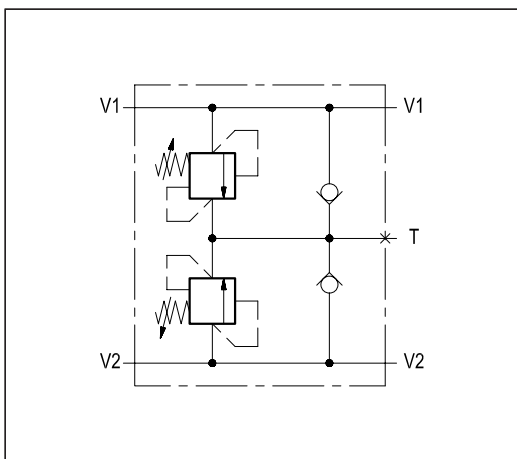
**DUAL CROSS OVER RELIEF,  
WITH ANTI-CAVITATION CHECK VALVES**

**VSDI-VA-80**

**05.16.05 - X - Y - Z**

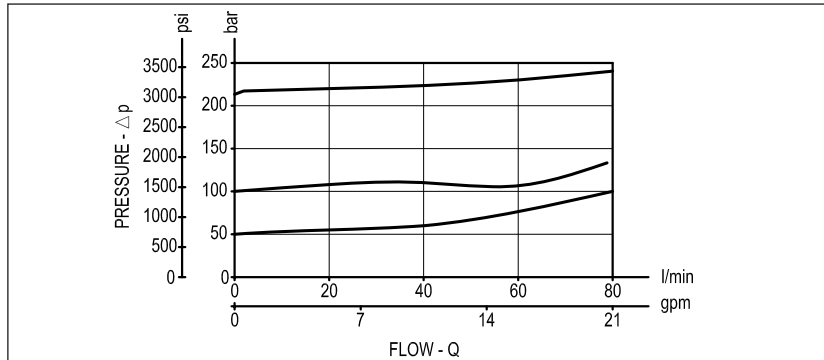


It relieves the inlet pressure from either one of the supply lines and it protects motors or hydraulic actuators from shocks or pressure surges induced by changes in direction or by sudden stops. The dual relief is of the cross over type, and exhausted oil is transferred to the other line (from V1 into V2 and vice-versa) to prevent cavitation. An extra tank port (T), with 2 checks, allows to make up for any drain or exhausted flow and ensures that the motor is always full.



**TECHNICAL DATA**

Operating pressure: up to 210 bar (3000 psi)
Max flow: 80 l/min (21 gpm)
Aluminium body NOTE: aluminium bodies are often strong enough for operating pressures exceeding 210 bar (3000 psi), depending from the fatigue life expected in the specific application. If in doubt, consult our Service Network.
Weight: 2.35 kg (5.2 lbs)
For relief cartridge details, see RE00162-02, page AS1.050.
Each cartridge can be individually pressure set. For best protection, the valve should be fitted as close to the actuator as possible.



<b>X</b>		<b>ADJUSTMENTS</b>
<b>03</b>	Leakproof hex. socket screw	
	Tamper resistant cap code 11.04.23.003	

<b>Z</b>	<b>SPRINGS</b>		
	Adj. press. range bar (psi)	Pres. increase bar/turn (psi/turn)	Std. setting bar (psi) Q=5 l/min
<b>10</b>	30-100 (435-1450)	12 (174)	100 (1450)
<b>20</b>	80-250 (1160-3600)	27 (392)	200 (2900)

<b>Y</b>	<b>PORT SIZE</b>
	V1-V2
<b>03</b>	G 1/2
<b>04</b>	G 3/4