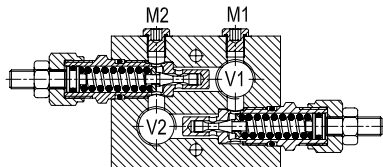
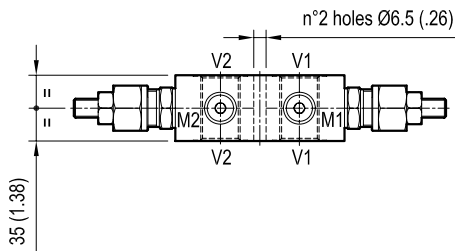
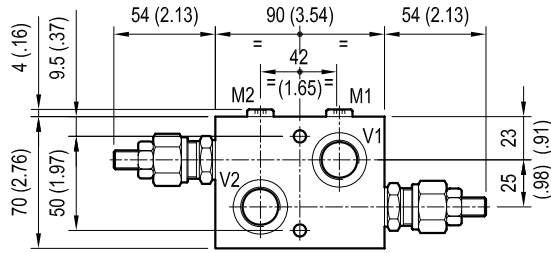


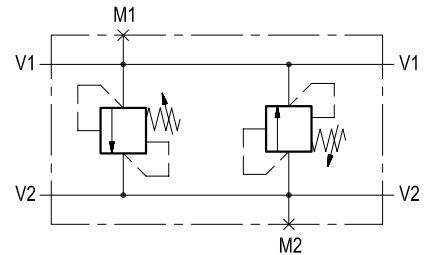
VSDI-30

05.16.03 - X - Y - Z



[ mm (inches) ]

It relieves the inlet pressure from either one of the supply lines and it protects motors or hydraulic actuators from shocks or pressure surges induced by changes in direction or by sudden stops. The dual relief is of the cross over type, and exhausted oil is transferred to the other line (from V1 into V2 and vice-versa), without the necessity of a separate tank line: this feature also prevents cavitation when used in conjunction with closed centre directional valve.



**TECHNICAL DATA**

Operating pressure: up to 210 bar (3000 psi)

Max flow: 30 l/min (8 gpm)

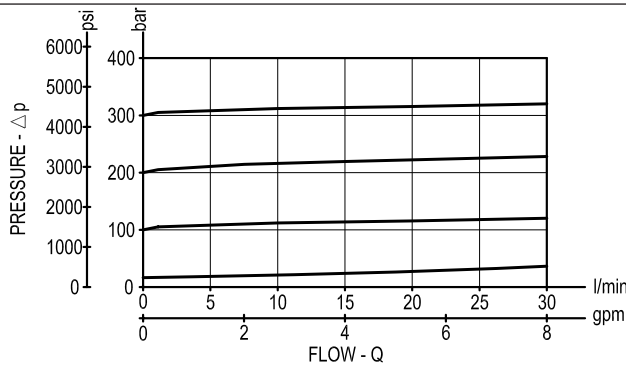
Aluminium body

NOTE: aluminium bodies are often strong enough for operating pressures exceeding 210 bar (3000 psi), depending from the fatigue life expected in the specific application. If in doubt, consult our Service Network.

Weight: 0.79 kg (1.7 lbs)

For relief cartridge details, see RE00162-02, page AS1.030.

Each cartridge can be individually pressure set. For best protection, the valve should be fitted as close to the actuator as possible.



**X ADJUSTMENTS**

**03** Leakproof hex. socket screw



Tamper resistant cap code 11.04.23.003



**SPRINGS**

Z	Adj. press. range bar (psi)	Pres. increase bar/turn (psi/turn)	Std. setting bar (psi) Q=5 l/min	Ordering code	Colour
<b>05</b>	5-50 (75-725)	12 (174)	50 (725)	03.51.01.077	black
<b>10</b>	30-100 (435-1450)	24 (348)	100 (1450)	03.51.01.076	blue
<b>20</b>	50-210 (725-3000)	47 (682)	200 (2900)	03.51.01.075	green
<b>35</b>	100-350(1450-5000)	82 (1189)	350 (5000)	03.51.01.059	yellow

**PORT SIZE**

Y	V1-V2	M1-M2
<b>02</b>	G 3/8	G 1/8
<b>03</b>	G 1/2	G 1/8