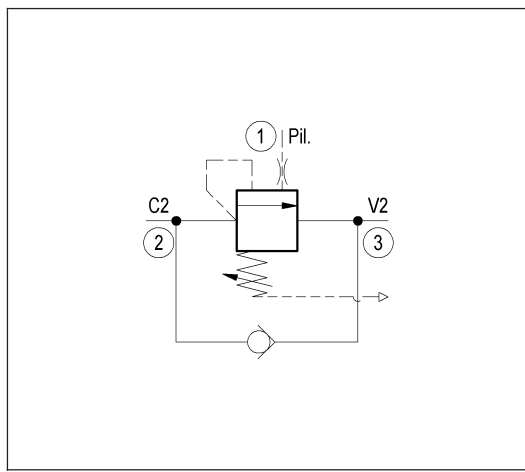
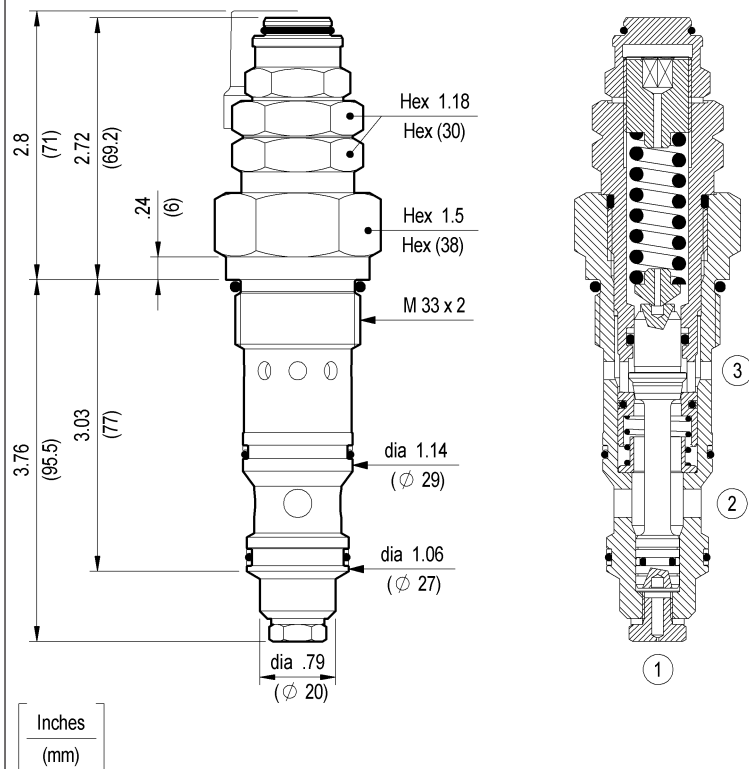




**COUNTERBALANCE, VENTED GUIDED POPPET TYPE
SPECIAL CAVITY**

VBSO-SEC-CCAP-33

04.59.03 - X - 99 - Z

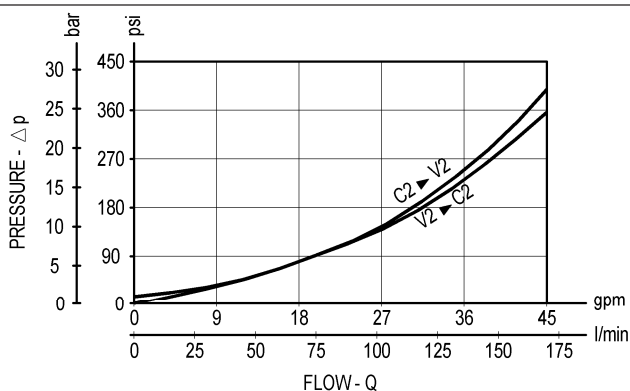


TECHNICAL DATA

| | | |
|-----------------------|---------------------------------|--------------|
| Max. pressure: | 5000 psi | (350 bar) |
| Max. flow: | 45 gpm | (170 l/min) |
| Special cavity : | CC063A-01 (see page CT.S.005.U) | |
| Installation torque : | 148-167 ft-lb | (200-225 Nm) |
| Weight: | 1.477 lbs | (0.670 Kg) |

Pressure setting: at least 1.3 times the load induced pressure

When pressure at 3 rises above the spring bias pressure, the check seat is pushed away from the piston and flow is allowed from 3 to 2. When load pressure at 2 rises above the pressure setting, the direct-acting, relief function is activated and flow is relieved from 2 to 3. With pilot pressure at 1, the pressure setting is reduced in proportion to the stated ratio of the valve, until fully open with free-flow from 2 to 3. The spring chamber is vented to atmosphere allowing operation of all functions independent of back-pressure at 3.



X PILOT RATIO

| | |
|-----------|---------|
| 03 | 4.2 : 1 |
| 65 | 8 : 1 |

Z

SPRINGS

| | | Adj. press. range psi (bar) | Press. increase psi / turn (bar/turn) | Standard setting psi (bar) (Q=5 l/min) |
|---------------|-----------|-----------------------------|---------------------------------------|--|
| X = 03 | 35 | 1450-5000 (100-350) | 1595 (110) | 5000 (350) |
| | 10 | 725-3000 (50-210) | 870 (60) | 1450 (100) |
| X = 65 | 35 | 1450-5000 (100-350) | 2915 (201) | 5000 (350) |

OPTIONS

| Ordering code | Description |
|---------------|----------------------|
| 11.04.30.001 | Tamper resistant cap |

Special settings available. Contact factory authorized representative for ordering code.