

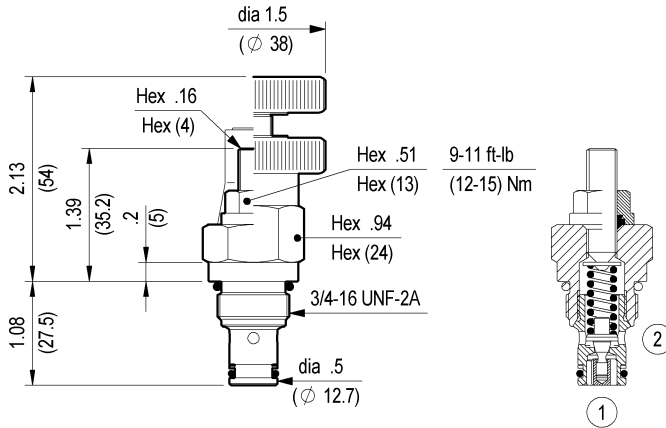
**RELIEF, DIRECT ACTING GUIDED POPPET TYPE  
COMMON CAVITY**



**VSBN-08A**

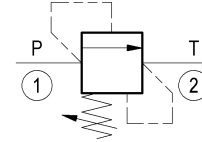
**SIZE 08**

**04.11.49 - X - 56 - Z**



Inches  
(mm)

Flow is blocked from 1 to 2 until pressure increases to meet the selected valve setting, lifting the poppet from its seat and allowing relief flow through port 2 to tank. Pressure at port 2 is additive to the relief setting of the valve. The unique Oil Control poppet design provides enhanced stability at all flows and pressures.



**TECHNICAL DATA**

Max. pressure: 5000 psi (350 bar)

Max. flow: 5 gpm (20 l/min)

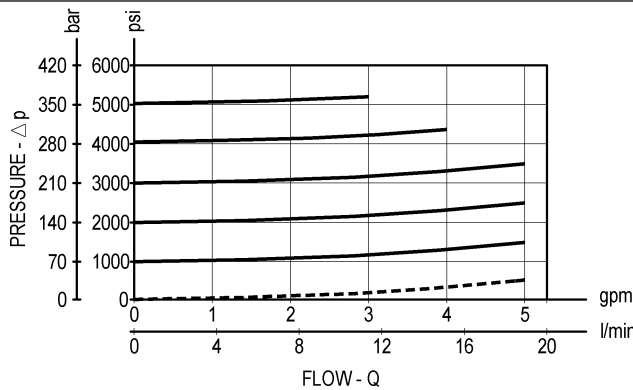
Cavity : CA-08A-2N (see page CT.A.001.U)

Line bodies : see page MN1.A...

External seal kit : see page A11.011

Installation torque : 25-30 ft-lb (34-41 Nm)

Weight: 0.309 lbs (0.140 Kg)



**X ADJUSTMENTS**

<b>03</b>	Leakproof hex. socket screw	
<b>04</b>	Handknob and locknut	
<b>73</b>	O-Ring seal on adjust screw	

**Z**

**SPRINGS**

		Adj. press. range psi (bar)	Press. increase psi / turn (bar/turn)	Standard setting psi (bar) (Q=5 l/min)		
<b>X = 03</b>	<b>05</b>	145-1000 (10-70)	375 (26)	725 (50)		
	<b>10</b>	500-2000 (35-140)	725 (50)	1450 (100)		
	<b>20</b>	1500-3000 (105-210)	1145 (79)	2900 (200)		
	<b>35</b>	2500-5000 (175-350)	2465 (170)	5000 (350)		
<b>X = 04</b>	<b>35</b>	500-5000 (35-350)	1044 (72)	2900 (200)		
<b>X = 73</b>	<b>35</b>	500-5000 (35-350)	1044 (72)	2900 (200)		

**OPTIONS**

Ordering code		Description
<b>X = 03</b>	11.04.23.002	 Tamper resistant cap
<b>X = 73</b>	11.04.23.004	

Special settings available. Contact factory authorized representative for ordering code.