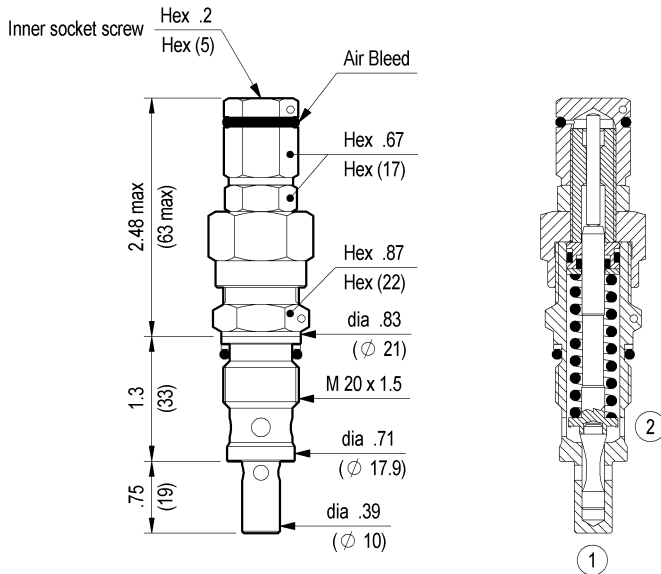




**RELIEF, DIRECT ACTING POPPET TYPE
PRESSURE COMPENSATED
SPECIAL CAVITY**

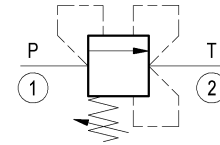
VS-30-CC

04.11.27 - X - 99 - Z



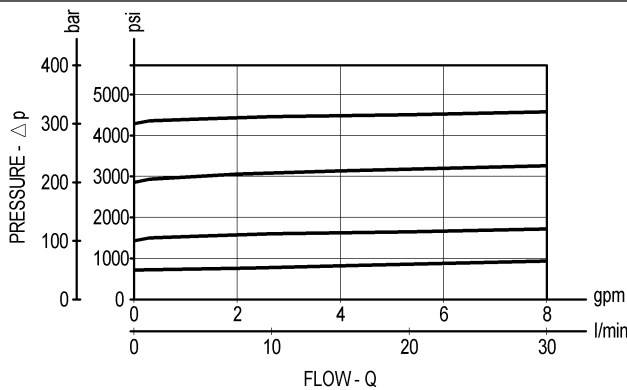
Inches
(mm)

Flow is blocked from 1 to 2 until pressure increases to meet the selected valve setting, lifting the poppet from its seat and allowing relief flow through 2 to tank. The valve applies a balanced piston design allowing consistent relief operation at the valve setting independent of back-pressure at 2. The unique Oil Control poppet design provides enhanced stability at all flows and pressures.



TECHNICAL DATA

Max. pressure:	5000 psi	(350 bar)
Max. flow:	8 gpm	(30 l/min)
Special cavity :	008 (see page CT.S.001.U)	
Installation torque :	34-38 ft-lb	(46-51 Nm)
Weight:	0.375 lbs	(0.170 Kg)



X ADJUSTMENTS

03	Leakproof inner hex. socket screw	
-----------	-----------------------------------	--

Z SPRINGS

Z	Adj. press. range psi (bar)	Press. increase psi / turn (bar/turn)	Standard setting psi (bar) (Q=5 l/min)	Ordering code	Color
05	75-725 (5-50)	160 (11)	725 (50)	03.51.01.077	black
10	435-1450 (30-100)	334 (23)	1450 (100)	03.51.01.076	blue
20	725-3000 (50-210)	682 (47)	2900 (200)	03.51.01.075	green
35	1450-5000 (100-350)	1189 (82)	5000 (350)	03.51.01.059	yellow

OPTIONS

Ordering code	Description
03.05.01.002	 Sealing cap

Special settings available. Contact factory authorized representative for ordering code.