



50-687

4-Lug Adapter

Fits most small cars with 4-lug patterns. Revision 12: 4 on 90.1mm, 94.1, 96, 98, 100, 4", 104, 108, 4.5" patterns.



50-688

5-Lug Adapter - Small

Fits many cars with smaller 5 lug patterns. Revision 12: 5 on 98mm, 100, 105, 106.4, 108, 112, 115, 118, 120mm patterns.



50-693

5-Lug Adapter - Large

Fits 5 Lug cars, smaller SUVs & trucks. Revision 4: 5 on 114mm, 4.5", 115mm, 120mm, 4.75", 127mm, 130mm patterns.



50-946

Light Duty 6 Lug Adapter

6 lug adapter fits some GM vehicles and some single wheel Sprinters. Revision 1 : 6 on 4.5", 115mm, 120mm, 4.75", 127mm, 130mm patterns.



50-681

4, 5, & 6 Lug 1/2-Ton Truck w/Import

Fits many 1/2 ton pick ups including Toyota & Chevy. Also fits some larger European vehicles. Revision 4: 4 on 5.5", 4 on 160mm, 5 on 5.5", 5 on 150mm, 6 on 5.5" patterns.



50-694

6 & 7 Lug Truck Adapter with F150

Has many 1/2-ton truck and SUV patterns. Revision 1: 6 on 132mm, 6 on 5.5", 6 on 135mm, 7 on 150mm patterns.



50-683

8 & 10 Truck Adapter

Fits 3/4 and 1-ton applications such as GM 2500HD and Ford F350. Revision 9: 8 on 6.5", 8 on 170mm, 8 on 180mm, 10 on 7.25" patterns.



50-935

Dual Wheel Truck Adapter

Fits many 1 ton dual wheel trucks. May require the use of additional stud extensions and a reach plate for rear rotors. Revision 9: 5 on 6.34", 6 on 6.5", 8 on 170mm, 8 on 200mm, 8 on 210mm, 8 on 225mm, 10 on 7.25", 10 on 222.25mm, 10 on 225mm patterns.



50-691

4, 5, & 6 Lug 1/2-Ton Truck

1/2 ton truck adapter, includes pre-2004 Ford F150. Revision 9: 4 on 5.5", 5 on 135mm, 5 on 5.5", 6 on 5.5" patterns.



50-246

Small Spacer Ring

Spacer for use with smaller 4 and 5 lug adapters.



30-791

Larger Spacer Ring

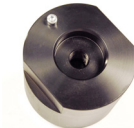
Large spacer for use with single wheel truck adapters.



50-046

Standard Nose Cone Extension

For use when cutting head gear box or feed screw interferes with vehicle or feed screw interferes with vehicle.



50-049

Double-thick Nose Cone Extension

Used where high offset is required for lathe to vehicle, or lathe to lift interference.



50-1020

Mini Adapter

MINI adapter includes 4 x 100 and 5 x 120 patterns.



50-1021

BMW & Mini Adapter

5 x 120 and 5 x 112 patterns that fit BMW & MINI and other German vehicles such as VW and Mercedes.



50-3ADPHON

Honda Adapter Kit

Set includes 3 nickel plated adapters with Honda lug nut contoured holes. 50-996: 4 on 100 w/ 56mm center hole, 50-997: 5 on 114.3mm & 5 on 120mm w/64mm center hole, and 50-998: 5 on 114.3mm w/72mm center hole.



50-695

Older Alternate 4, 5, & 6 Lug Adapter

Fits many cars and the lightest trucks. Revision 6: 4 on 4.75", 5 on 4.5", 5 on 4.75", 5 on 5", 6 on 4.5", 6 on 5" patterns.



50-1022

4 & 5 Lug Tall Adapter

Increases offset for many Asian & European cars. Revision 1: 4 on 100mm, 4 on 114.3mm, 5 on 100mm, 5 on 112mm, 5 on 114.3mm, 5 on 120mm patterns.



50-689

3 Lug Adapter

Revision 3: 3 on 98mm, 112mm, 114.3mm, 120mm, 130mm, 150mm, 160mm patterns.



50-940

European 5 Lug Adapter

Alternate Euro adapter includes 5 x 114.3 mm, and 5 x 120mm patterns.



50-939

Alternate Dual Wheel Adapter

Fits many Asian Dual wheel trucks such as Mitsubishi and Isuzu. Revision 1: 5 on 203mm, 5 on 208mm, 6 on 8.75" patterns.



50-955

1-Ton High Hat Adapter

Dual wheel truck adapter for rear axle. No stud extensions required. Use with correct reach extension plate for your lathe model. Rev. 1: 8 on 200mm, 210mm, 225mm and 10 on 225mm patterns.



50-TRANSIT

Ford Transit Adapter Kit

Fits full size Ford Transit single and dual wheel models. Includes Rev. 7 50-696 adapter (5 on 155mm, 160mm, 165mm, 170mm) and Rev. 1 50-934 adapter (5 on 170mm, 190mm, & 6 on 180mm, 205mm, 222.3mm, 245mm), and 3) 50-962 spacers.



50-999KIT

Medium-Duty Dual-Wheel Truck Kit

Has 8 on 275mm and 10 on 11.25" patterns. Fits most medium duty trucks and buses. Complete kit for front & rear includes 1) 50-944 adapter, 1) 50-999 adapter, 5) 50-986 M20 nuts, 5) 50-987 M22 nuts, 5) 50-960 25mm spacers, 10) 50-961 8mm spacers.



50-TRK955

Dual Wheel Truck Kit Revision 2

For front & rear 3/4 & 1 ton trucks from Ford, GM, & Ram. Includes 50-683, 50-935, 50-955 adapters, and 50-1492 reach plate. Fits 9.2, X9, and A10 lathes only.



50-989

HD Adapter

HD adapter with 10x335 pattern. Fits many city & charter buses, and larger trucks with heavy axles.



50-TRKKIT

Dual Wheel Truck Kit Revision 1

For domestic 1 ton dual wheel pick-up chassis trucks 2002 and newer. Includes 50-683, 50-935, 50-1492, and 50-005, 50-007, & 50-009 stud extensions.



50-179

Nut and Bolt Kit

Includes 5 nuts each of 1/2"x20, 12mmx1.25, 12mmx1.5, 9/16x18, 14mmx1.5, and 30-687 Studs.



50-1347KIT

Dual Wheel Truck Kit - X9D

For front and rear of 3/4 and 1 ton trucks from Ford, GM, and Ram. Includes 50-683, 50-935, 50-955 adapters, and 50-1347 reach plate for 1330 cutting head.



30-687

Studs for Fiat / Dodge / Jeep

Studs for late model Fiat 500, Dodge Dart and 200 models. Requires M12 X 1.25 lug nuts from 50-179 kit.



50-1492K

Ford E&F 350/450/550 Reach Ext. Kit

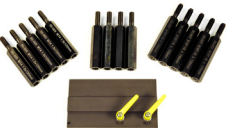
For rear rotors on dual wheel trucks where additional reach is required. Use with 50-935 adapter and 9.2, X9, and A10 lathes with 50-220 or 50 12XX series cutting heads.



50-006

GM Hexagonal Stud Extensions

For rear of some 3500 HD GM trucks: 5/8"x18 - 5 per set. For use with 50-935R9 adapter and correct reach extension plate for your lathe model.



50-492K

Ford E&F 350/450/550 Reach Ext. Kit

Same as 50-1492K, but for 50-220 Speed-Lock cutting head only



50-1011

Dodge ProMaster Stud Extensions

Stand offs for late model Dodge full size ProMaster. Requires 50-693 adapter and M14 lug nuts from the 50-179 kit.



50-1492

Reach Extension Plate

Allows lathe to reach rear rotors of medium and heavy duty trucks. For 9.2, X9, and A10 lathes.



50-185KIT

Mitsubishi Box Truck Rr. Stud Ext.

Kit includes 3 x 50-185L left-hand thread extensions in blue, 3 x 50-185R right-hand thread extensions in red, and 3 x 35-185 adapter pilot bolts. Use with 50-939 adapter.



50-1347

T-Slot Reach Extension Plate

Reach Extension plate for X9D lathes.



SuperTech

SuperTech App for Pro-Cut Techs.

Free app for Android or iOS. Includes: Adapter Search, Pro-Cut Rep zip search, TrainSMART Training, Videos, Diagrams, and Tech Manuals.

<https://www.procutusa.com/supertech.aspx>