

COATS®

4070

Tire Changer

For servicing single piece automotive and most light truck tire/wheel assemblies



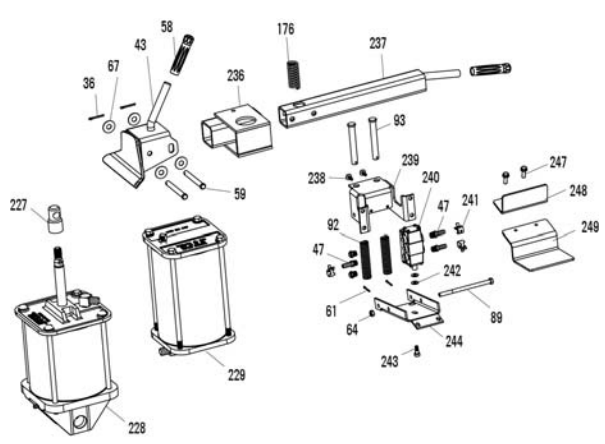
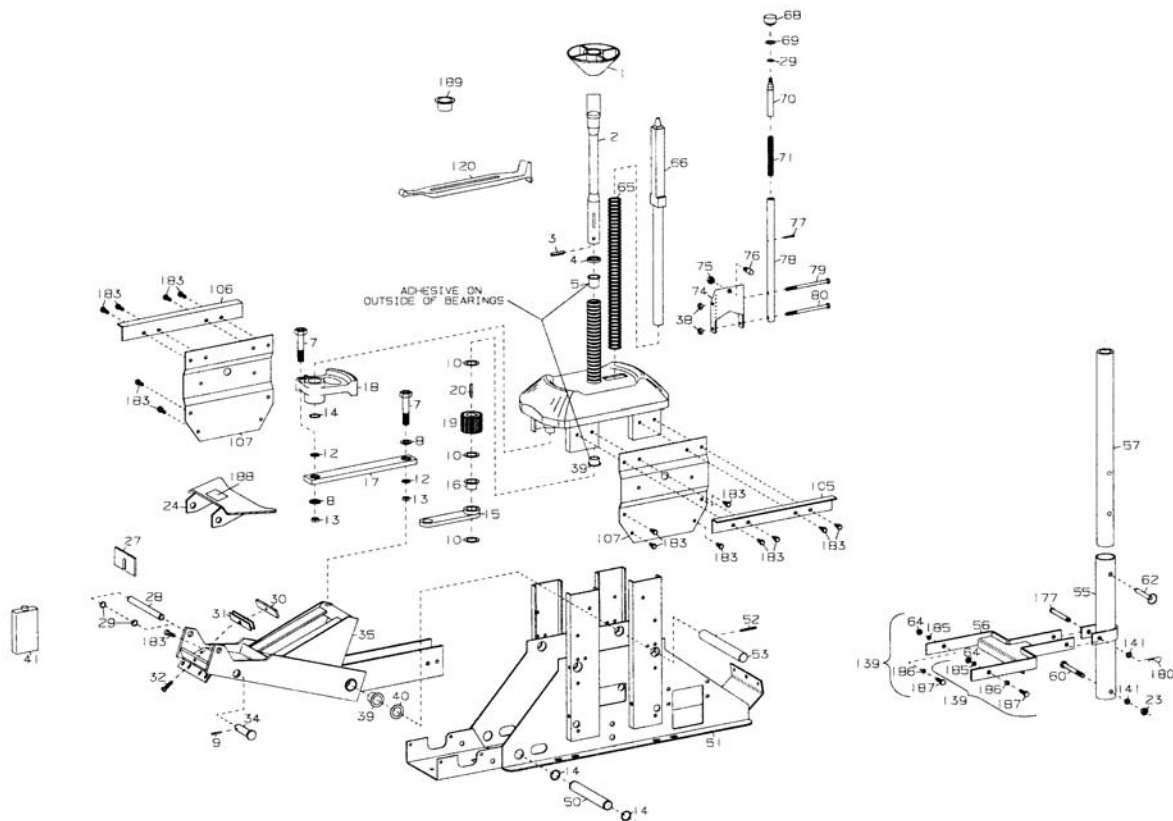
Parts Identification

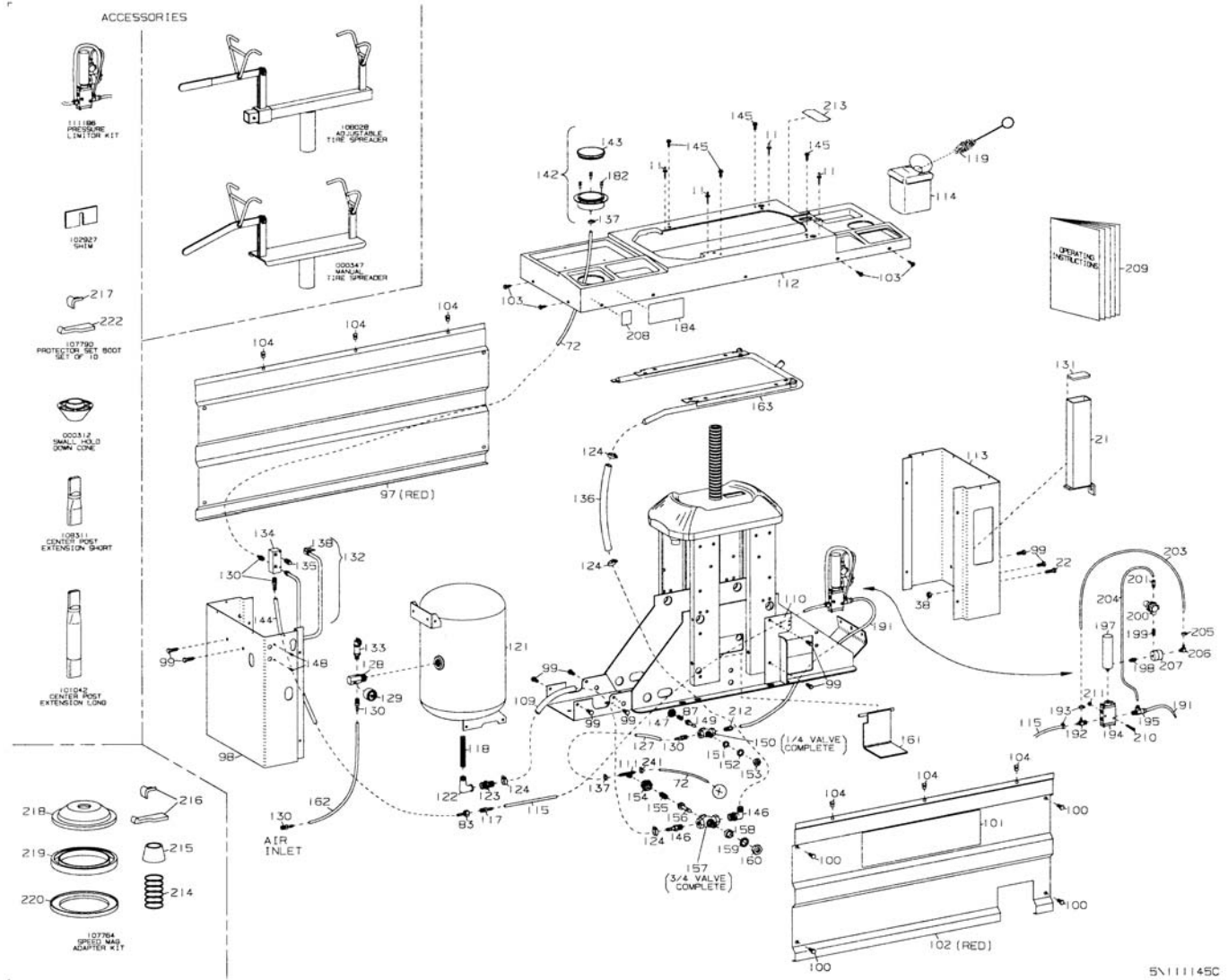
READ these instructions before placing unit in service KEEP these and other materials delivered with the unit in a binder near the machine for ease of reference by supervisors and operators.

HENNESSY INDUSTRIES, INC.

1601 J. P. Hennessy Drive, LaVergne, TN USA 37086-3565 615/641-7533 800/688-6359 www.ammcoats.com
HENNESSY INDUSTRIES INC. Manufacturer of AMMCO®, COATS® and BADA® Automotive Service Equipment and Tools.

Manual Part No.: 85608977 00
Revision: 08/13





5X111145C

ITEM	PART NO.	DESCRIPTION	ITEM	PART NO.	DESCRIPTION
1	8108276	Centering Cone	64	8000516	3/8" Lock Nut, Gr.5
2	8108289	Center Shaft	65	8108292	Positioning Pin Spring
3	8000304	3/8" x 1-3/4" Roll Pin	66	85608916	Positioning Pin
4	8108290	Center Post Washer	*	85608915	Shaft Stop
5	8000510	1-1/4" x 1-1/4" Nylon Bearing	*	8181674	Screws
7	8101296	3/4" Drive Gear Bolt, Gr.5	67	8108265	1/2" Machine Bushing
8	8100958	Self-Aligning Washer	68	8104155	Knob
9	8100602	3/16" x 1-1/4" Roll Pin	69	8103264	3/4" x 1-1/4" Machine Bushing
10	8101651	1-1/4" Machine Bushing (Ea.)	70	8104262	Push Handle
11	8108593	3/16" Dia. Rivet (Ea.)	71	8104284	Detent Spring
12	8108280	3/4" Machine Bushing (Ea.)	72	8099050	3/8" Hose 14" Long
13	8100957	3/4" Lock Nut N.C. (Ea.)	74	8104120	Support Bracket
14	8100964	1-1/4" Snap Ring (Ea.)	76	8104354	Stud Kit
15	8101298	Gear Tie Bar	77	8103006	5/32" x 1-1/4" Cotter Pin
16	8101352	Tie Bar Nylon Bearing	78	8106230	Arm Detent
17	8101089	Drive Gear Bar Assembly	79	8110653	3/8" x 6" Cap Screw, Gr.5
18	8104247	Drive Gear Complete	80	8110653	3/8" x 6" Cap Screw, Gr.5
19	8100951	Pinion	83	8108605	Female Coupler Assembly
20	8101091	Shaft Key	87	8102468	Poppet String (Ea.)
21	8107770	Combo Tool Holder	89	8110653	3/8" x 6" Cap Screw, Gr.5
22	8107715	HHCS 3/8 - 16 x 1-1/4" Gr.5	92	8104149	Valve Spring
23	8101039	1/2" Lock Nut N.C., Gr.5	93	8104154	5/8" x 4-1/2" Clevis Pin (Ea.)
24	85608955	Large Lower Shoe	97	8108298	Side Panel Rear Complete
27	8102927	1/4" Shim	98	8106247	End Panel Left
28	8101003	Lower Shoe Shaft	99	8102459	3/8" Self-Tapping Screw, Gr.5
29	8101001	3/4" Snap Ring (Ea.)	100	8102459	3/8" Self-Tapping Screw, Gr.5
30	8105133	1/4" Shoe Adjusting Bar	101	8110824	Warning Decal
31	8101506	Shoe Adjusting Shim Kit	102	8108298	Side Panel Front Complete
32	8105131	3/8" x 1-1/4" Self Tapping Bolt, Gr.5	103	8106301	1/4" Hex Whiz Lock Self-Tapping Screw, Gr.5
34	8101002	Upper Cylinder Clevis Pin	104	8106304	Skin Fastener Tinnerman
35	8107195	Power Arm	105	8108584	Angle Top Support
36	8103006	5/32" x 1-1/4" Cotter Pin	106	8108584	Angle Top Support
38	8000516	3/8" Lock Nut, Gr.5	107	8108130	Plate Chassis Stiffener
39	8101351	Nylon Bearing (Ea.) w/Flange	109	8108319	3/4" Hose 27-1/2"
40	8101651	Machine Bushing (Ea.)	110	8110533	Inflation Limiter Bracket
41	8101411	1 Quart Special Hyd. Oil (Unit Capacity – 5 Quarts)	111	8184469	Male Branch Tee
43	8108131	Shoe W/C	112	8107922	Plastic Top Cover
46	8000372	1/4" x 90° Street Elbow	113	8106248	End Panel Right
47	8101898	3/8" Hose Fitting	114	8106572	Bottle - Lube
49	8107240	3/8" Hose 23-1/2"	115	8106289	1/4" Hose 22"
50	8101000	Lower Cylinder Shaft	117	8102390	1/4" Push On Fitting
51	8108331	Chassis Weld Assembly	118	8106188	Strainer Screen
52	8101371	1/4" x 2-1/4" Roll Pin	119	8000491	Lube Applicator
53	8100970	Power Arm Axle	120	8000768	Combination Tool
55	8107655	Large Tube W/C	121	8107927	Surge Tank
56	85608928	Arm Weldment	122	8000572	3/4" x 90° Street Elbow
57	8107661	Tube Small	123	8104573	3/4" Straight Fitting (Ea.)
58	8100979	Top Bead Loosener Handle Grip	124	8101346	Hose Clamp (Ea.)
59	8111148	Clevis Pin	127	8099053	1/4" Hose 6"
60	8107663	HHCS 1/2" x 4-3/4", Gr.5	128	8183434	1/4" Tee with 1/8" Port
61	8102278	1/8" x 1 Cotter Pin (Ea.)	129	8108968	300 Lb. Gauge
62	8107665	Clevis Pin Detent	130	8000376	1/4" Hose Fitting

* Not Shown

ITEM	PART NO.	DESCRIPTION	ITEM	PART NO.	DESCRIPTION
131	8107768	Rubber Bumper Combo Tool Tube	201	8182035	St. Fitting 1/4" Tube x 1/8 NPT
132	8106871	Inflation Hose Assembly	202	8101428	1/4" Hose Clamp
133	8104968	Safety Valve 200 PSI	203	8103649	1/4" Hose 12"
134	8106270	Inflation Manifold	204	8182037	1/4" OD Nylon Tube 10"
135	8103737	Release Valve	205	8101428	1/4" Hose Clamp
136	8108589	3/4" Hose 31"	206	8110497	Fitting 90° Male Elbow
138	8410419	Air Chuck	207	8109468	Pressure Regulator
139	8107664	Bolt, Nut & Spacer Kit (Ea.)	208	8109769	Decal Tire Bead Valve
141	8010027	1/2" Washer	209	8111144	Operating Instructions
142	8107985	Air Gauge Kit Flange Mounting	210	8120408	HHCS 1/4"-20 x 1-3/4", Gr. 5
143	8107517	Gauge Lens, Screw On	211	8143169	1/4"-20 Whiz Lock Nut, Gr. 5
144	8106289	1/4" Hose 22"	212	8181998	St. Fitting 3/8" Tube x 1/4 NPT
145	8106301	1/4" Hex Whiz Lock Self-Tapping Screw, Gr.5	213	8108842	Detent Label
146	85009959	3/4" Elbow	214	8107637	Spring
147	8105671	End Cap (1/4" Valve)	215	8107636	Positioning Cone
148	8104596	10-32 Self-Tapping Screw	216	8107790	Protector Set Boot, Set of 10
149	8104649	Poppet (1/4" Valve)	217	8108397	Mounting Boot, 500 Bulk Pack
150	8104600	1/4" Valve Complete	218	8107641	Adapter Plate
151	8104673	Bushing 1/4" Valve	219	8107634	Cushion Thin
152	8104613	5/8" External Lock Washer	220	8107734	Spacer Cushion
153	8104611	5/8" Jam Nut N.F.	222	8108398	Demount Boot, 500 Bulk Pack
154	8106350	End Cap 3/4" Valve	223	8107662	HHCS 1/2" x 5"
155	8104651	Spring 3/4" Valve	227	85608906	Rod End Shaft
156	8104652	Poppet 3/4" Valve	228	85608715	8" Cylinder Assembly
157	8106298	3/4" Valve Ported 1/4-18 NPT	229	85608739	7" Cylinder Assembly
158	8104674	Bushing 3/4" Valve	*	8108319	3/4 x 27-1/2" Hose
159	8104612	3/4" Lock Washer	*	8101346	1/2 x 1-1/4" Hose Clamp
160	8104610	3/4" Jam Nut N.F.	*	85606363	16mm Hose Clamp
161	85608918	Air Flate Pedal	*	8099050	3/8" ID x 5/8" OD Black Hose, 54" L
162	8106281	1/4" Hose 20"	*	85608994	8" Cylinder Seal Kit
163	8109672	Air Tube Complete	236	85608922	Upper Bead Loosener Mount
176	8102840	Spring	237	85608921	Upper Bead Loosener Tube Adjustment
177	8107724	Clevis Pin	238	8143168	1/4-20 x 3/4 HHCS Whiz Lock Screw
182	8107983	Plastic Fastener Gauge Mounting	239	85608932	Valve Bracket
183	8107413	Serrated Washer H.D. Bolt 3/8" x 1", Gr.5	240	8184878	Pedal Valve
184	8109849	Inflation Warning Decal	241	85606363	16mm Hose Clamp
185	8101018	Washer	242	8000745	Plain Washer
186	8107738	Spacer Bushing	243	8301016	3/8 x 3/8 x 5/16-18 SHSS Screw
187	8107715	HHCS 3/8"-16 x 1-1/4", Gr.5 (Ea.)	244	85608931	Valve Plate
188	8108109	Lower Shoe Adjustment Decal	*	8106303	3/8" Whiz Lock Nut
189	8108147	Hold Down Tube	*	8107413	3/8-16 x 1 SHWH Screw, Zinc
191	8111185	Nylon Tube 3/8" OD x 24"	247	8184388	5/16-18 x 1 HWHTCS Screw, Typ 23
192	8110325	1/4" NPT Male Run Tee	248	8106032	Foot Pedal Guard
193	8101428	1/4" Hose Clamp	249	85608917	Pedal Rotate
194	8109466	Valve	*	8000525	5/16-18 Hex Lock Nut
195	8111255	Spl. Tee, 1/4 NPT x 1/4 x 3/8			
197	8110496	Volumn Chamber			
198	8109471	1/8" Close Nipple			
199	8109472	1/8" In-Line Filter			
200	8111083	Regulator			

* Not Shown



Read and follow installation and maintenance instructions on this page and in the unit's Operation Instructions manual to help insure proper, safe operation and to obtain the best possible service life from the unit. Correct installation, regular inspections, and proper maintenance are essential to help prevent accidents and injuries.

Installation Instructions

1. The COATS 4070 should be securely bolted to the floor using the slotted holes on each side of the frame. Use all 4 anchor points. Use high-strength corrosion resistant industrial fasteners.

2. The operating pressure range at the machine must be 100 to 175 PSI. **DO NOT EXCEED 175 PSI** at the machine. Sufficient air pressure is required for good performance. The 4070 is supplied with a 1/4" male pipe thread for easy connection. The connection is located at the lower left corner on the operators side. **DO NOT HAVE AN UNATTACHED, UNRESTRICTED AIR LINE AVAILABLE AT OR NEAR THE MACHINE. ALL AIR/SERVICE LINES AVAILABLE TO OPERATORS SHOULD BE THROUGH THE TIRE CHANGER.**

3. Read and follow additional instructions in the machines Operating Instructions manual.

General Maintenance

1. The moving parts of the COATS 4070 are self-lubricating through the use of powdered metal and nylon bearings for extended trouble-free performance.

2. Lower bead loosener shoe adjustment:

A. Mount a 15" or 16" steel wheel without a tire on the machine table top.

B. Cycle the machine and note the clearance between the flange of the wheel and the lower shoe (ref. 24). The proper shoe clearance is from 1/16" to 1/8". If clearance is not within these limits, the shoe must be adjusted.

C. To adjust the shoe, loosen 3/8" x 1-1/2" bolt (ref. 32) and add or remove shims (ref. 31) to bring shoe to the correct adjustment.

D. Tighten the bolt (ref. 32) and check adjustment again as described in steps A and B above. Bolt can be replaced with thumb screw 8110817 and washer 8000240 for quick shim change. Note 1/4" shim is recommended for 18" or custom wheels.

3. Air gauge calibration.

A. Mount a large 15" tire/wheel assembly on the machine table top. Pressurize the tire to 32 PSI. Measure the pressure with a high quality stick-type tire gauge. Connect the machine's air chuck to the tire valve.

B. If the gauge does not read 32 PSI, remove the screw-on gauge lens and loosen the two screws located at the edge of the dial face. Do not loosen the screws more than 3 turns.

C. Rotate the dial face until the 32 PSI graduation mark is aligned with the gauge pointer.

D. Tighten the dial face screws and clean and replace the screw-on lens.

E. If the gauge is inoperative or defective, replace it immediately. Order part number 8107985 from the COATS Company, phone (615) 641-7533. If your machine is equipped with the optional pressure limiter, the function of the limiter should be checked weekly.

8" Cylinder Maintenance (85608715)

Proper cylinder maintenance is necessary for safety and performance. The design of the hydraulically dampened 8" air cylinder (85608715) facilitates smooth, controlled bead loosening, mounting, and demounting. It is important that the cylinder be filled to the proper level at all times. If the oil becomes low, the machine will surge at the beginning of the stroke. If fast or jerky motion is noted, cease operation; then remove cylinder (85608715) and slave cylinder (85608739). Remove plug from slave cylinder and fill with oil until there is no air in either cylinder or connecting hose. A high quality hydraulic oil must be used (ref. 41). This can be ordered from COATS®(615) 641-7533.



Read and follow all safety information on the machine. Always work carefully and safely.

