

# COATS

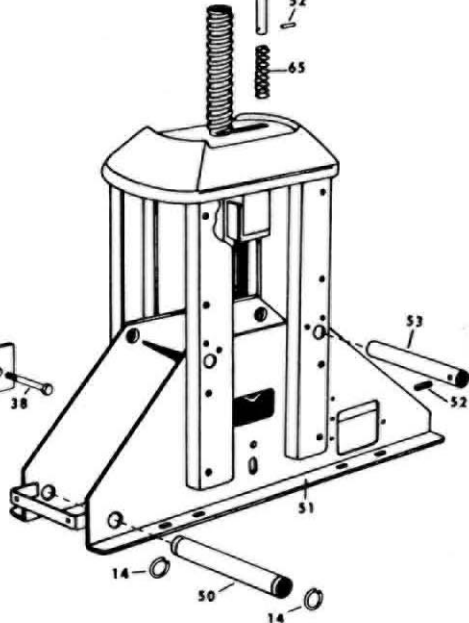
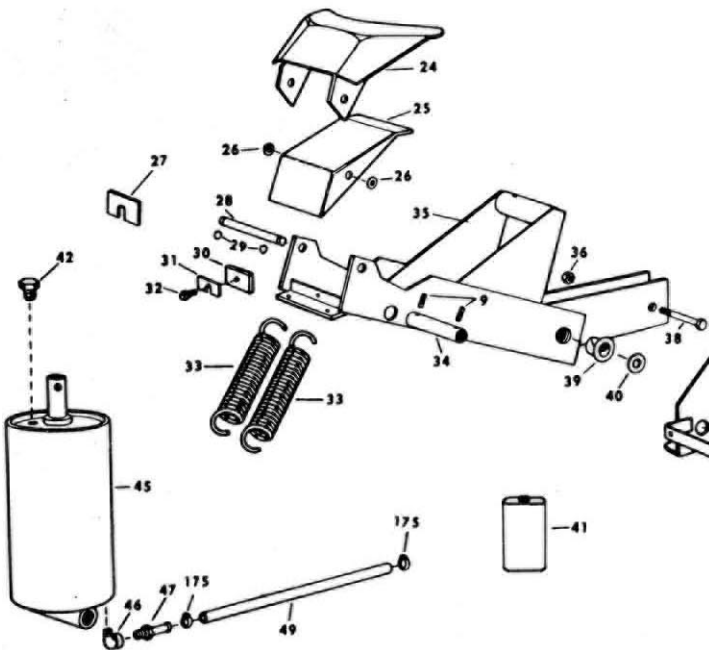
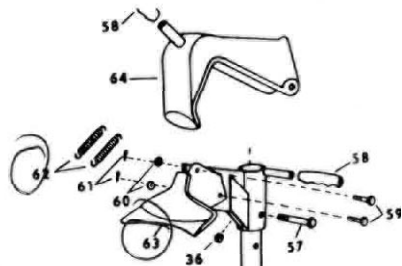
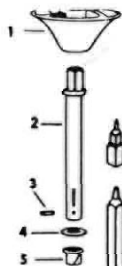
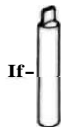
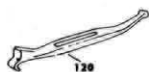
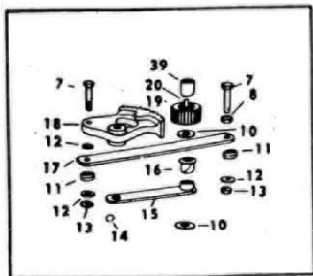
## 20-20 AIR-FLATE

This Parts List is for  
units with  
Serial No. 20-20A-54,994 and up



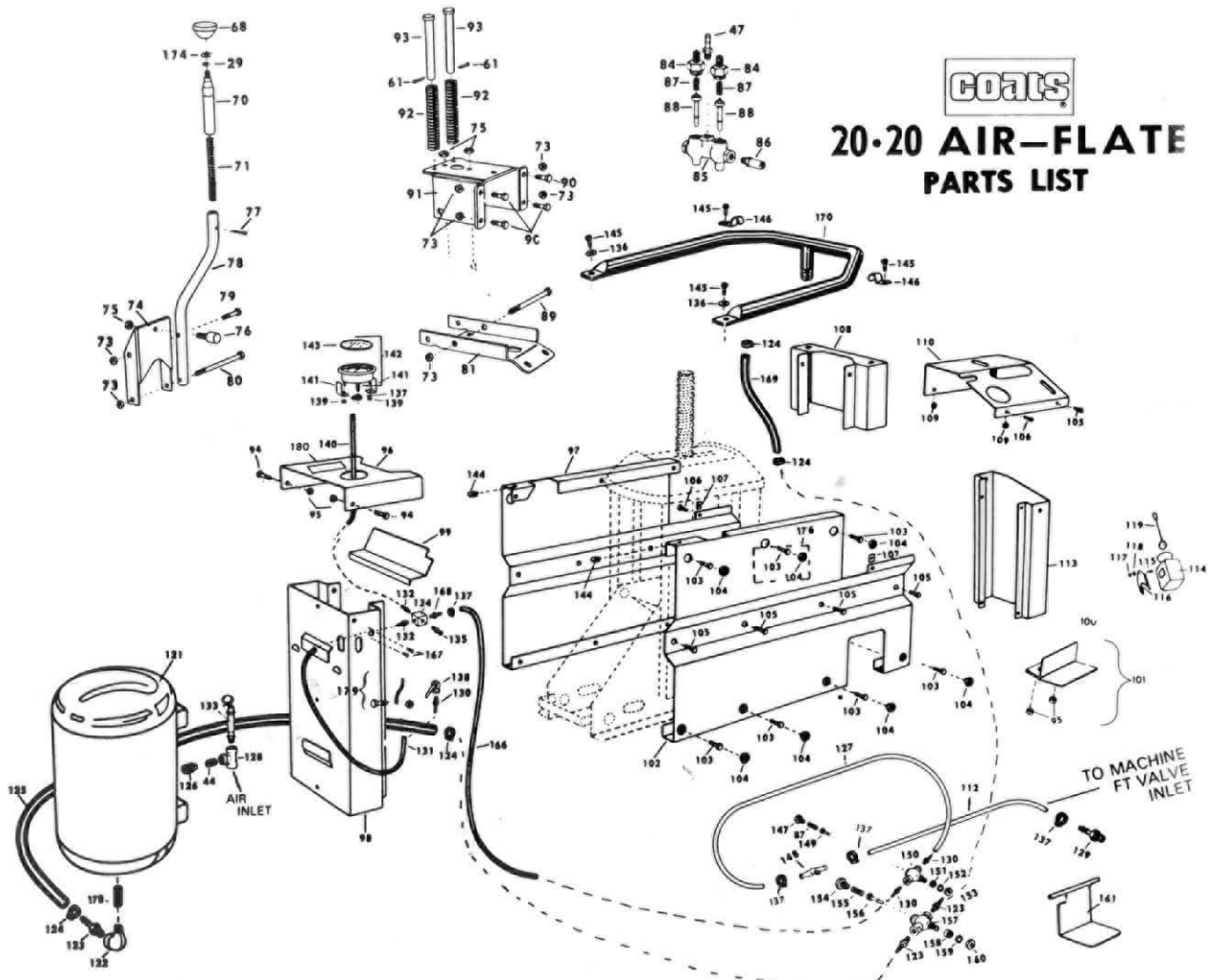
ORDER PARTS FROM YOUR DISTRIBUTOR OR JOBBER

Ref. No.	Part No.	Description	Ref. No.	Part No.	Description	Ref. No.	Part No.	Description
1	000433	Hold Down Cone	73	102937	1/4" Lock Nut N.F. (Ea.)	140	103733	Hose (9')
2	104250	Center Shaft Assembly	74	104120	Support Bracket	141	104137	Air Gauge Mtg. Bracket (Ea.)
3	000304	3/4 x 1 1/4 Nylon Bearing	75	103260	1/2" Lock Nut N.F. (Ea.)	142	107518	Air Gauge
4	104253	Machine Bushing	76	104354	Stud Kit	143	105366	Lens Assy.
5	000510	1 1/2 x 1 1/4 Nylon Bearing	77	103626	5/32 x 1 1/2 Cotter Pin	144	104755	Tinnerman Nut
6	101296	1/4" Drive Gear Bolt (Ea.)	78	104115	Datent Arm	145	104945	1/2" x 1/4" Self Tapping Bolt (Ea.)
7	100958	Self Aligning Washer	79	103814	1/4 x 1 1/2 Cap Screw N.F.	146	104584	Ring Fastener (Ea.)
10	101158	1 1/2" Self Aligning Bushing (Ea.)	80	104193	1/4 x 5/8 Cap Screw N.F.	147	105571	End Cap (1/4" Valve)
11	100950	Self Aligning Bushing (Ea.)	81	104108	Foot Valve Plate	148	106278	Male Branch Tee
12	101253	3/4" Machine Bushing (Ea.)	84	104355	Valve Cap (Ea.)	149	104649	Poppet (1/4" Valve)
13	100957	3/4" Lock Nut (Ea.)	85	104265	Valve Complete	150	104600	1/4" Valve Comp.
14	100954	1/4" Snap Ring (Ea.)	86	104209	Muffler	151	104673	Bushing 1/4" Valve
15	101298	Gear Tie Bar	87	102468	Poppet Spring (Ea.)	152	104813	1/4" External Lock Washer
16	101352	Tie Bar Nylon Bearing	88	102469	Poppet (Ea.)	153	104811	1/4" Jam Nut N.F.
17	101080	Drive Gear Bar Assembly	89	104147	1/4 x 2" Cap Screw N.F.	154	106350	End Cap (1/4" Valve)
18	104247	Drive Gear Complete	90	103815	1/4 x 1" Cap Screw N.F.	155	104851	Spring (1/4" Valve)
19	100951	Pinion	91	104110	Valve Bracket	156	104852	Poppet (1/4" Valve)
20	101091	Shaft Key	92	104169	Valve Spring (Ea.)	157	106298	1/4" Valve Complete
22	104246	Center Post Adapter	93	104154	1/4 x 4 1/2 Clevis Pin (Ea.)	158	104674	Bushing 3/4" Valve
23	104245	Center Post Extension	94	104173	Shoulder Bolt (Ea.)	159	104612	1/4" External Lock Washer
24	101042	Large Lower Shoe	95	000528	5/16" Lock Nut N.F. (Ea.)	160	104610	1/4" Jam Nut N.F.
25	101251	Small Lower Shoe	96	104676	Top Cover	161	105520	Foot Pedal
26	100994	Shoe Spacer (Ea.)	97	105670	Side Panel R.H.	166	103648	Hose 36"
27	102927	1/4" Shim	98	104944	Front Panel	167	104596	10-32 Self Tapping Screw
28	101003	Lower Shoe Shaft	99	104949	Parts Tray	168	104644	1/4" Straight Fitting
29	101001	1/4" Snap Ring (Ea.)	100	106035	Foot Pedal	169	106283	Hose (24')
30	105133	Shoe Adjusting Bar	101	106190	Foot Pedal Mtg.	170	106237	Air Tube
31	101506	Shoe Adjusting Shim Kit	102	105669	Side Panel L.H.	171	102344	1/4" x 1 1/4" Machine Bushing
32	105131	1/4 x 1 1/4 Self Tapping Screw	103	101110	1/4" Self Tapping Screw (Ea.)	175	101427	Hose Clamp
33	104012	Return Spring (Ea.)	104	104288	Plastic Plug (Ea.)	176	108016	Warning Decal
34	101002	Upper Cylind. Shaft	105	102459	1/4" Self Tapping Bolt (Ea.)	177	105824	Cap Plug
35	104236	Power Arm	106	000528	1/4 x 1 Tinnerman Nut (Ea.)	178	106188	Strainer Screen
36	101039	1/2" Lock Nut N.C. (Ea.)	107	000529	Tinnerman Nut (Ea.)	179	107142	Clip Spring Kit
38	101040	1/2 x 3/4 Cap Screw (N.C.)	108	104101	Short Leg	180	108059	Inflation Warning Decal
39	101351	Nylon Bearing (Ea.)	109	103151	Spacer (Ea.)			
40	101851	Machine Bushing (Ea.)	110	104882	Conical			
41	101411	1 Or Special Hydraulic Oil (Ea.)	112	102048	Nose (18')			
42	105678	Plastic Breather Plug	113	104102	Rear Panel			
44	000580	Close Nipple	114	106259	Lube Bottle			
45	107242	7" Cylinder	115	100538	7/16" x 1/2" Cap Screw N.C.			
46	000372	1/4" x 90' Street Elbow	116	000490	Lube Bracket			
47	101898	1/4" x 90' Straight (Ea.)	117	000755	7/16" Square Nut			
49	102785	Hose (28')	118	000534	7/16" Lock Washer			
50	101000	Lower Cylind. Shaft	119	000491	Lube Applicator			
51	104156	Chassis	120	000788	Combination Tool			
52	108810	1/4" x 2" Cotter Pin	121	104900	Surge Tank			
53	100370	Power Arm Axle	122	000572	1/4" x 90' Street			
54	104026	Extension Tube	123	104573	1/4" Straight Fitting (Ea.)			
55	104267	Clevis Pin	124	101348	Hose Clamp (Ea.)			
56	104024	Adjustable Upper Bead Loosener Arm	125	104679	Hose (29')			
57	102376	1/2 x 3/4 Cap Screw N.C.	126	101312	Reducing Bushing (1/4" - 1/4")			
58	100979	Top Bead Breaker Handle Grip (Ea.)	127	106284	Hose (13 1/2')			
59	105276	Clevis Pin	128	000643	1/4" Tee (Ea.)			
60	010002	Washer (Ea.)	129	000378	Hose Fitting			
61	102278	1/4 x 1 Cotter Pin (Ea.)	130	102390	1/4" Hose Fitting (Ea.)			
62	101106	Top Bead Shoe Breaker Spring	132	103861	1/4" Hose Fitting (Ea.)			
63	100988	Top Bead Loosener Shoe Comp.	133	104988	Safety Valve			
64	101183	Top Bead Breaker Nose	134	104881	1/4" Way Fitting			
65	103871	Positioning Pin Spring	135	103737	Relief Valve			
66	103870	Positioning Pin	136	000745	1/4" Flat Washer (Ea.)			
67	104319	Positioning Pin Extension	138	101426	Hose Clamp			
68	104185	Knob	139	103753	Air Chuck			
69	104282	Push Arm	139	104138	Air Gauge Mtg. Nut (Ea.)			
71	104284	Desert Spring						





# 20-20 AIR-FLATE PARTS LIST



# INSTALLATION INSTRUCTIONS AND LUBE DISPENSER INSTALLATION

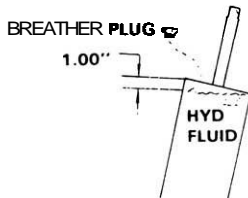
1. The Coats 20.20 Air-Flate can be bolted to the floor with suitable anchors through the holes on each side of the base. Two diagonal anchors are sufficient.
2. The best operating air pressure is 150 psi at the machine. Do not exceed 175 psi at the machine. The Coats 20.20 Air-Flate is furnished with a 1/4" NPT female fitting for easy connection. This connection is located at the side of the surge tank. A 1/4" I.D. hose, or pipe, for connection to the machine is satisfactory. Sufficient air pressure will assure good performance.
3. For installing of the Lube Dispenser, refer to the parts list on page 3. Remove the adjustable upper bead loosener assembly from the machine. Insert the cap screw, ref. no. 115, through the mounting hole of the lube bracket, ref. no. 116. Insert the cap screw through the top hole of the rear panel, ref. no. 113. Reach through the oblong hole on the console, ref. no. 110, and place 7/16 lock washer, ref. no. 118, on cap screw. Thread the 7/16 square nut, ref. no. 117, on cap screw hand tight. Place the lube bottle, ref. no. 114, on the lube bracket, ref. no. 116. Pivot the lube bottle and bracket to an approximate angle as shown on photo on page 1. Using a 3/4" wrench on the nut and a 5/8" wrench on the bolt, secure the nut. Replace the adjustable upper bead loosener assembly.

## MAINTENANCE

1. The moving parts of the Coats 20.20 Air-Flate are self-lubricating, through the use of powdered metal or nylon bearings, for a lifetime of performance.

## CYLINDER MAINTENANCE

It is important that the power cylinder be filled to the proper level at all times. If the oil becomes low, the machine will jump at the beginning of its stroke. To add oil, disconnect the machine from the air supply. Disconnect 3/4" hose at bottom of surge tank. Disconnect 1/4" hose from air flate foot valve to aluminum 4-way fitting located under parts tray tool cover. Remove front panel assembly (surge tank end) by removing (6) 3/8 self-tapping bolts. (3) per side. Two of the self-tapping bolts on each side are concealed behind plastic plugs. Remove springs. With combination tool rotate center post key counter-clockwise until cylinder is at the top of its stroke. MAKE CERTAIN CYLINDER IS AT THE TOP OF ITS STROKE OR OVERFILLING WILL RESULT. Remove plastic breather plug. Fill cylinder to within 1" to 1-3/16" from access hole in the top. Be careful that no dirt falls through access hole. REPLACE PLASTIC BREATHER PLUG



SHAFT EXTENDED



FILL AS SHOWN WITH COATS  
HYDRAULIC OIL NO. 101411.  
ALTERNATE CHOICE EMPAK "4061,"  
SHELL "TELLUS 21"  
DO NOT USE MOTOR OIL OR  
BRAKE FLUID.

**NOTE** ALWAYS REINSTALL **PLASTIC BREATHER PLUG**